

# WALINDI

FOR SALE

LEOPARD | 34 M (111.55 FT) FT | 2006

# WALINDI

An impressive Leopard 34 with a large opening top sunroof, high-quality furnishing, and entertainment systems. She has a light and modern interior design, large seating, and sunbathing areas up forward on the bow and aft deck, making her a fantastic, stylish, and comfortable open-style super yacht.

The yacht transfers her guests fast to their dream destinations while providing ultimate comfort and luxury along the way. With her impressive performance and a top speed of 43 knots, the yacht has won the "European Yacht Trophy" in the large 100 –120 foot open style motor yacht category.

**ASKING PRICE**

€ 1,950,000 (EU VAT PAID)

# KEY FEATURES

## TOP SUNROOF

large opening

## TV LOUNGE

on the main deck TV Lounge with a bathroom can be easily converted to a 5th cabin

## 4 CABINS

for 9 guests in fully equipped en-suite cabins

## FURNISHING

of high-quality

## VAT

Paid

## INTERIOR DESIGN

is light and modern





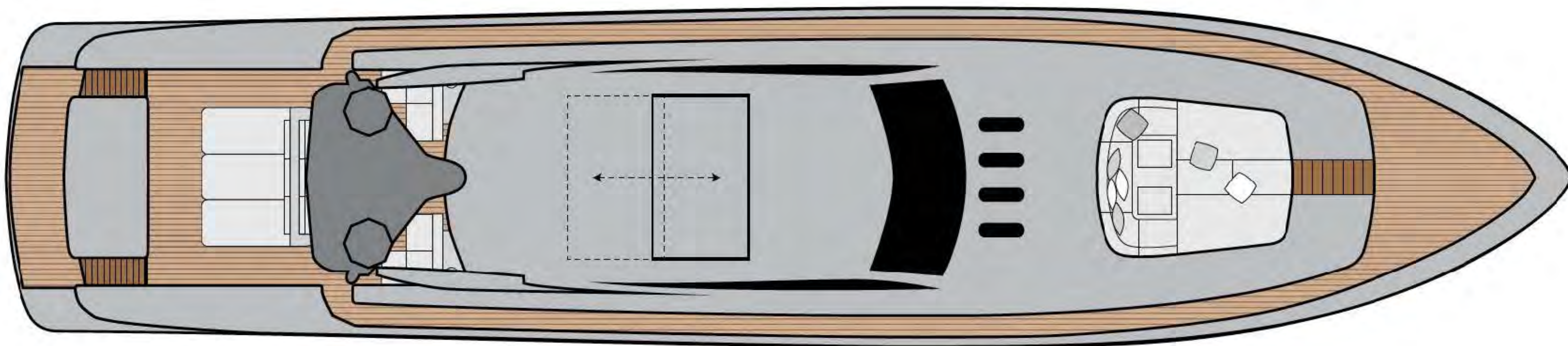
With its sleek design and opulent amenities, WALINDI invites you to immerse yourself in a world of elegance and sophistication.

From the moment you step aboard, you'll be greeted by luxurious furnishings, state-of-the-art entertainment systems, and a spacious layout designed for relaxation and enjoyment.



**WALINDI** OFFERS THE PERFECT BLEND OF PERFORMANCE AND COMFORT.

# SUN DECK



# SUN DECK

With expansive views of the azure horizon stretching as far as the eye can see, her sundeck offers a **haven of tranquility and indulgence.**



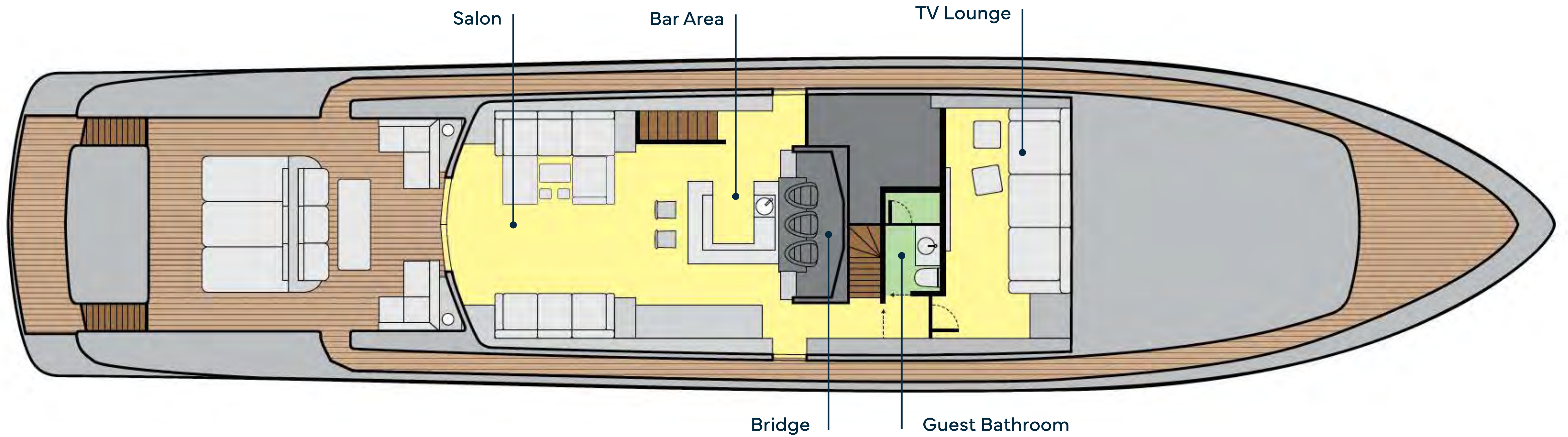


# EPITOME OF RELAXATION

Whether you seek quiet contemplation or lively gatherings with friends and loved ones, her sundeck is the **perfect setting** for **unforgettable moments** and **cherished memories at sea**.



# MAIN DECK





**SALON**



**SALON**



**BRIDGE**

# TV LOUNGE

The TV Lounge invites you to **unwind in comfort** while enjoying your favorite shows and movies.

But the allure of her TV Lounge doesn't end there. With a configuration change, this inviting space can be **transformed into a fifth cabin.**

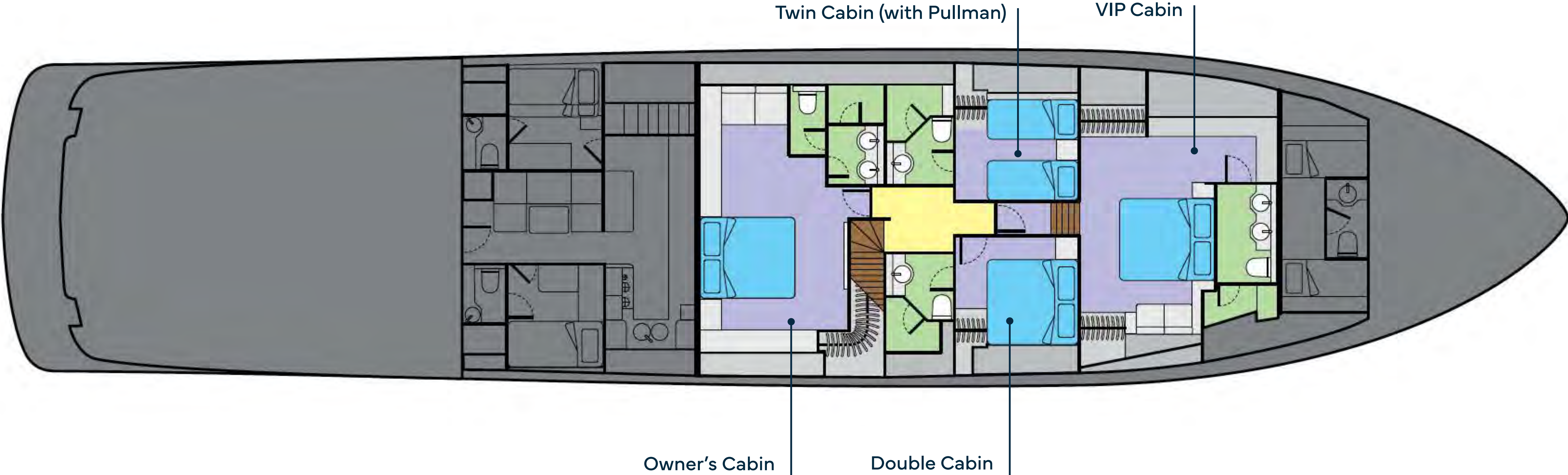




Licht  
bean  
tien

**TV LOUNGE**

# LOWER DECK







**OWNER'S CABIN**





VIP CABIN



**VIP CABIN**



**BATHROOM**



DOUBLE CABIN



**TWIN CABIN**

A luxury yacht deck at dusk, featuring a dining table set for a meal with white plates, glasses, and silverware. The deck is furnished with grey cushions and white chairs. In the background, a coastal town is built on a hillside overlooking the water. The word "SPECIFICATION" is overlaid in large, bold, yellow-green letters in the center of the image.

# SPECIFICATION



## CHARACTERISTICS

<b>NAME:</b>	WALINDI
<b>BUILDER:</b>	CANTIERI NAVALE ARNO/LEOPARD
<b>YEAR BUILT:</b>	2006
<b>TYPE:</b>	MOTOR YACHT
<b>FLAG:</b>	MALTESE
<b>CONSTRUCTION HULL:</b>	GRP
<b>CRUISING SPEED:</b>	31 KNOTS
<b>MAXIMUM SPEED:</b>	43 KNOTS

## DIMENSIONS

<b>LENGTH O.A.:</b>	34 M (111 FT 55")
<b>BEAM:</b>	7,35 M (24 FT 11")
<b>DRAFT:</b>	1,4 M (4 FT 59")
<b>GROSS TONNAGE:</b>	184

## ACCOMMODATION

<b>OWNER:</b>	1 X STATEROOM
<b>GUEST:</b>	1 X VIP CABIN 1 X TWIN GUEST CABINS 1 X GUEST CABIN
<b>TOTAL:</b>	4 + 1 PULLMAN
<b>GUESTS CRUISING:</b>	12
<b>GUESTS SLEEPING:</b>	8 + 1
<b>CREW:</b>	5 IN 3 CABINS





## MACHINERY

---

<b>MAIN ENGINES:</b>	3 X MTU 16V 2000 M93 À 1838 KW / 2450 HP
<b>PORT:</b>	3749 HOURS (FEBRUARY 2024)
<b>STARBOARD:</b>	3773 HOURS (FEBRUARY 2024)
<b>CENTRE:</b>	3728 HOURS (FEBRUARY 2024)
<b>GENERATORS:</b>	2 X KOHLER 40KW
<b>PORT:</b>	7780 HOURS (FEBRUARY 2024)
<b>STARBOARD:</b>	9220 HOURS (FEBRUARY 2024)

## AV EQUIPMENT

---

SONY PLASMA TV IN THE MAIN SALOON, TV ROOM, AND ALL CABINS.  
DVD PLAYER IN ALL CABINS.  
CONTROL 4 CENTRAL DISPATCHER.  
SONOS ALL YACHT THROUGHOUT.  
HARD DISK DRIVER. TV ROOM AND THE FOREDECK SUNBATHING AREA.

## COMMUNICATIONS

---

WI-FI THROUGHOUT THE YACHT.  
PANASONIC PHONE SYSTEM FOR INTERNAL AND EXTERNAL COMMUNICATIONS.  
HIGH-SPEED ONLINE BROADBAND AT PORTS / OR PEPWAVE 5G.  
WIRELESS PRINTER, FAX, AND SCANNER.  
FLEET 55 FOR SATELLITE PHONE AND FAX COMMUNICATIONS.

---

## CAPACITIES & CONSUMPTION

<b>FUEL:</b>	16000 L
<b>FRESH WATER:</b>	2000 L
<b>FUEL CONSUMPTION:</b>	900 L /H AT CRUISING SPEED

---

## TENDERS & WATER TOYS

<b>TENDER:</b>	454 WILLIAMS TENDER FUEL ENGINE SEABOB FS5
<b>WATER TOYS:</b>	SNORKELING EQUIPMENT BANANA



# WALINDI

