



DAR

FOR CHARTER

OCEANCO | 90 M (295.27 FT) | 2018

DAR

Built by Oceanco, with exterior design by Luiz de Basto Design and interiors by Nuvolari & Lenard, the 90m yacht **DAR** is now exclusively offered for charter. DAR's layout deviates from contemporary yacht designs. Nearly 3,000 gross tons of volume have been allocated to each feature, providing **ample space**.

DAR can accommodate up to 12 guests in **complete privacy**, thanks to its unique setup. Designer Nuvolari Lenard has crafted welcoming interiors that seamlessly connect to the yacht's highly versatile exteriors. Her impressive features include **a complete owner's deck**, with a **private salon and jacuzzi**, a **wellness area**, and an **impressive beach club**.

KEY FEATURES

COMPLETE OWNER'S DECK

with fully private salon and jacuzzi pool deck forward, isolated from cameras in total privacy

BEACH CLUB

prized space onboard for sunbath, cocktails, and much more

7 CABINS

for 12 guests: 1 x Owner, 2 x VIPs, 4 x Double

ELEVATOR

Six person elevator serving all guest decks



KEY FEATURES

WELLNESS AREA

Hammam, sauna,
massage/beauty salon

POOL

with fresh water,
counter current

GYM

fully equipped and with floor to
ceiling windows

WATER TOYS

Extensive list
of water-sports

The entire vessel exudes a **seamless elegance**. Glistening white balconies and walkways, along with the roofline, sheer line, transom, and bridge, create an illusion of perpetual motion, especially accentuated by the sharply angular bow.

White streaks appear suspended in time against the backdrop of the deep black hull and reflective mirror-glass superstructure, adding an extra layer of **captivating allure** to the scene.

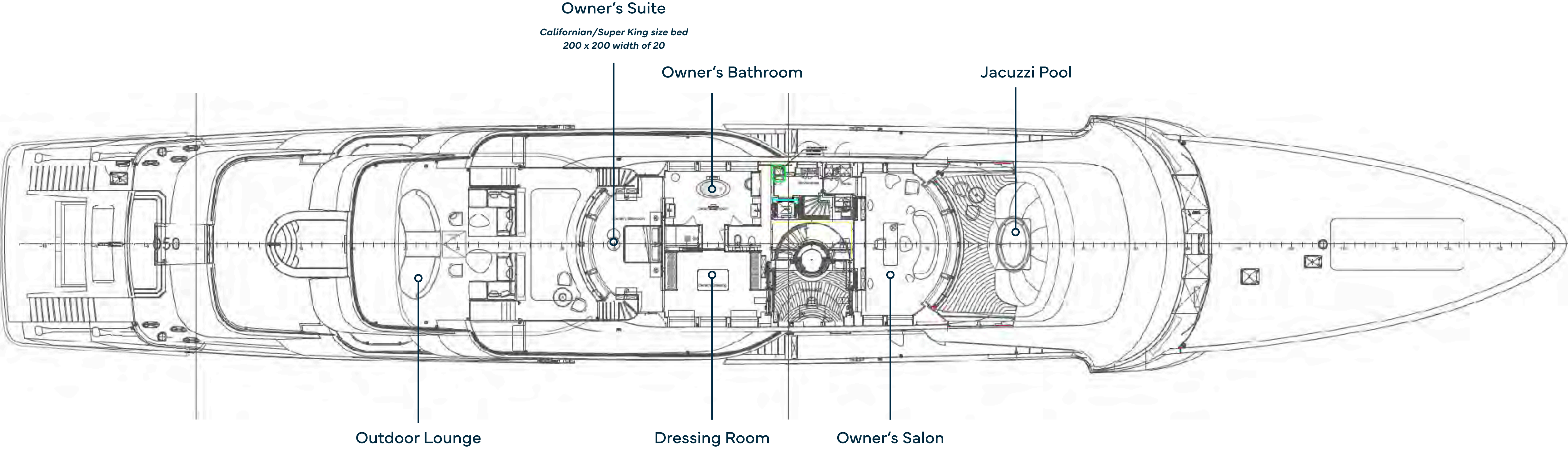


DAR LOOKS LIKE
NO OTHER YACHT.





OWNER'S DECK





JACUZZI POOL

Forward is a jacuzzi pool with a shower – a space that cannot be overlooked.

For a thrilling escape, take the waterslide 15 meters down to the sea.



JACUZZI POOL



JACUZZI POOL



JACUZZI POOL



JACUZZI POOL



OWNER'S SALON



DRESSING ROOM



OWNER'S BATHROOM

The Owner's deck features a spa tub within the luxurious grand en suite, offering **ocean views** while you indulge in a bath.

Additionally, there is a separate terrace at the front, complete with a jacuzzi, providing **complete privacy**.



OWNER'S BATHROOM



OWNER'S BATHROOM



OWNER'S SUITE

OUTDOOR LOUNGE

An entire deck is **dedicated to the owner**. The 135-square-metre apartment has private access to a teak-top deck. It could also be set up for **entertaining, sport, or even as an outdoor cinema**.



OUTDOOR LOUNGE



OUTDOOR LOUNGE



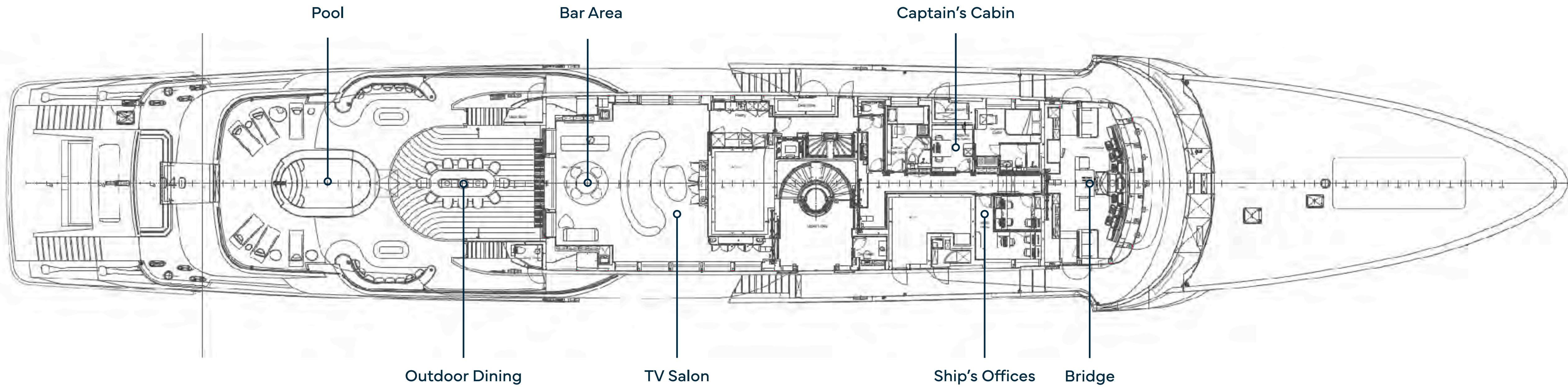


OUTDOOR LOUNGE



OUTDOOR LOUNGE

UPPER DECK



POOL

Immerse yourself in the inviting **6-metre pool**, where you can swim effortlessly against the gentle countercurrent.

Twin oversized umbrellas gracefully pivot to your desired angle, providing the perfect shade for your comfort. Unwind on the plush sunbeds or recline on the serpentine side sofas, creating a **haven of relaxation and leisure**.





POOL



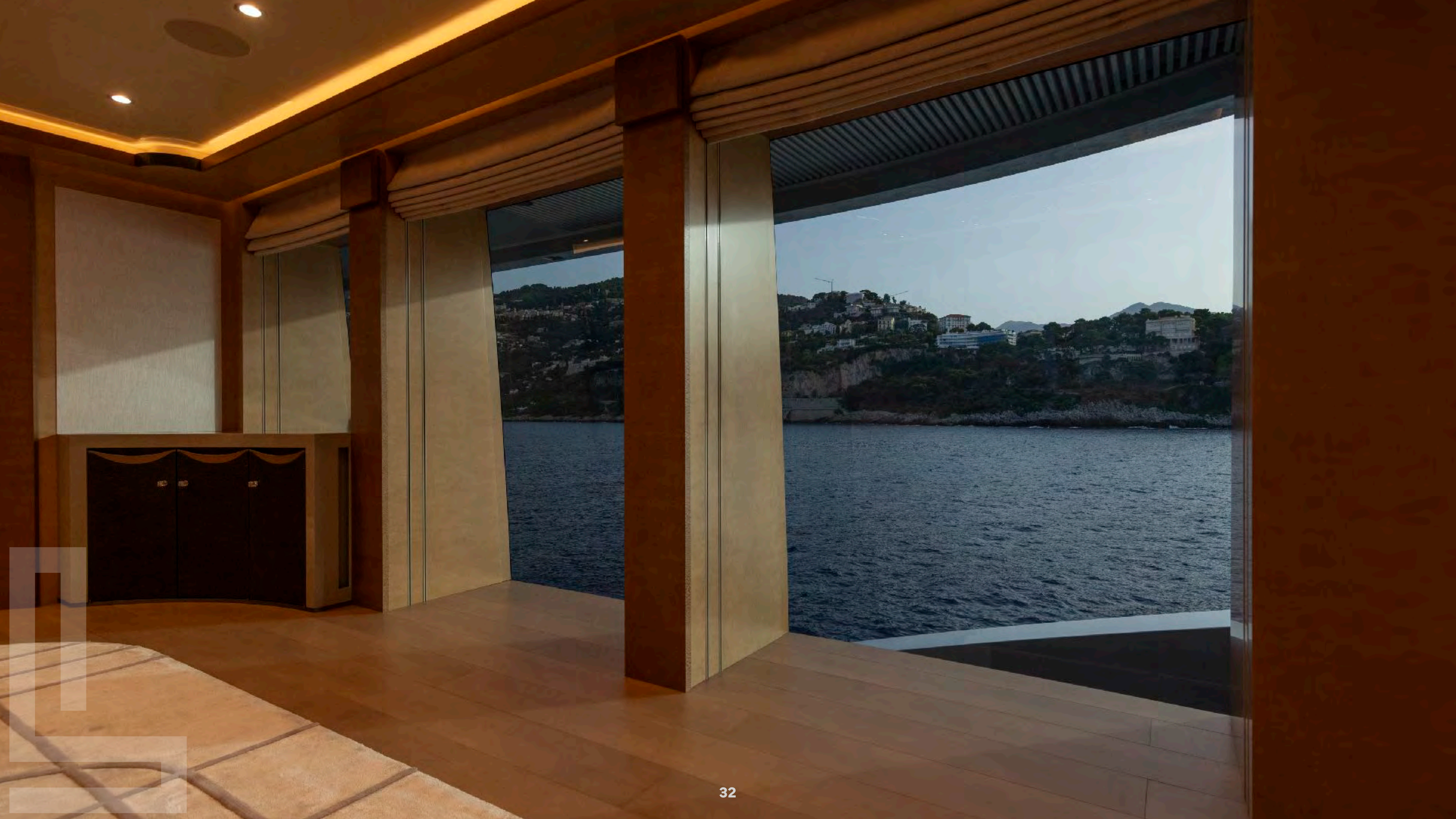
POOL



OUTDOOR DINING



OUTDOOR DINING





BAR AREA



BAR AREA





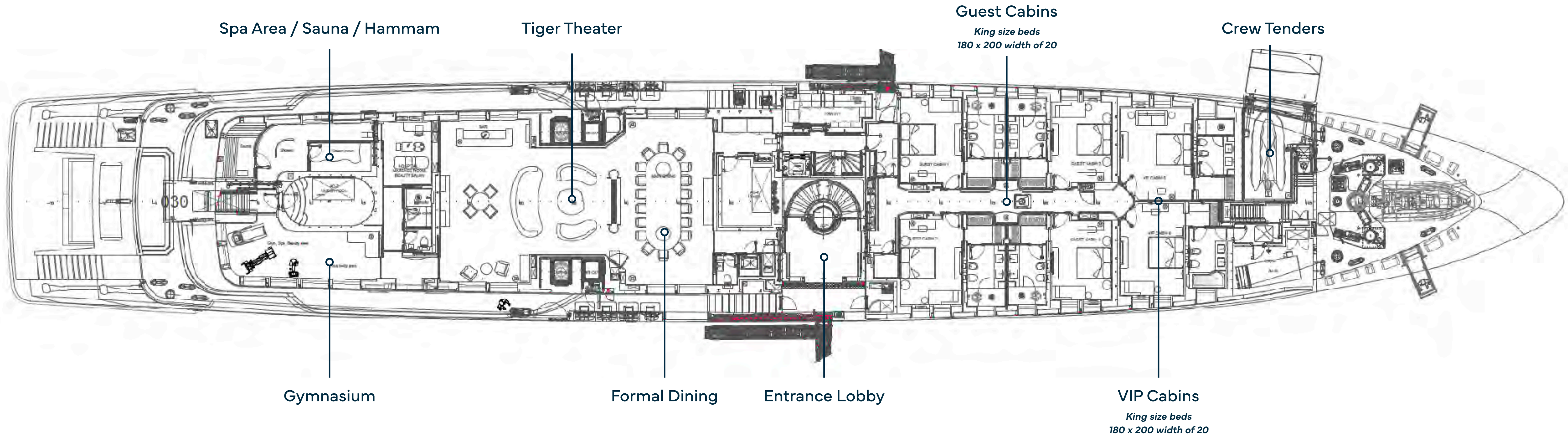
TV SALON





TV SALON

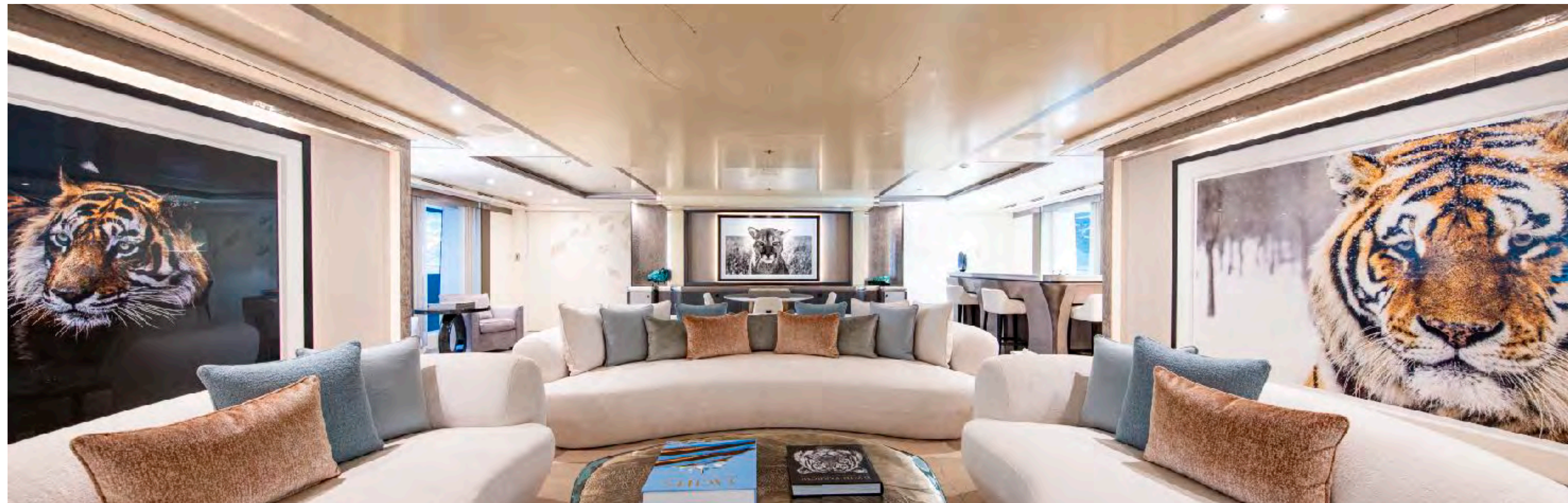
MAIN DECK



**Please note there are 6 sofa beds (1 in each Guest Cabin) that can be set up as a small single bed for children under 10 years old.
Bed size: 70 x 190 cm.*

TIGER THEATER

The main deck tiger theater offers a **large lounge** with bar, games area and TV screen.





TIGER THEATER



TIGER THEATER



TIGER THEATER



FORMAL DINING



FORMAL DINING



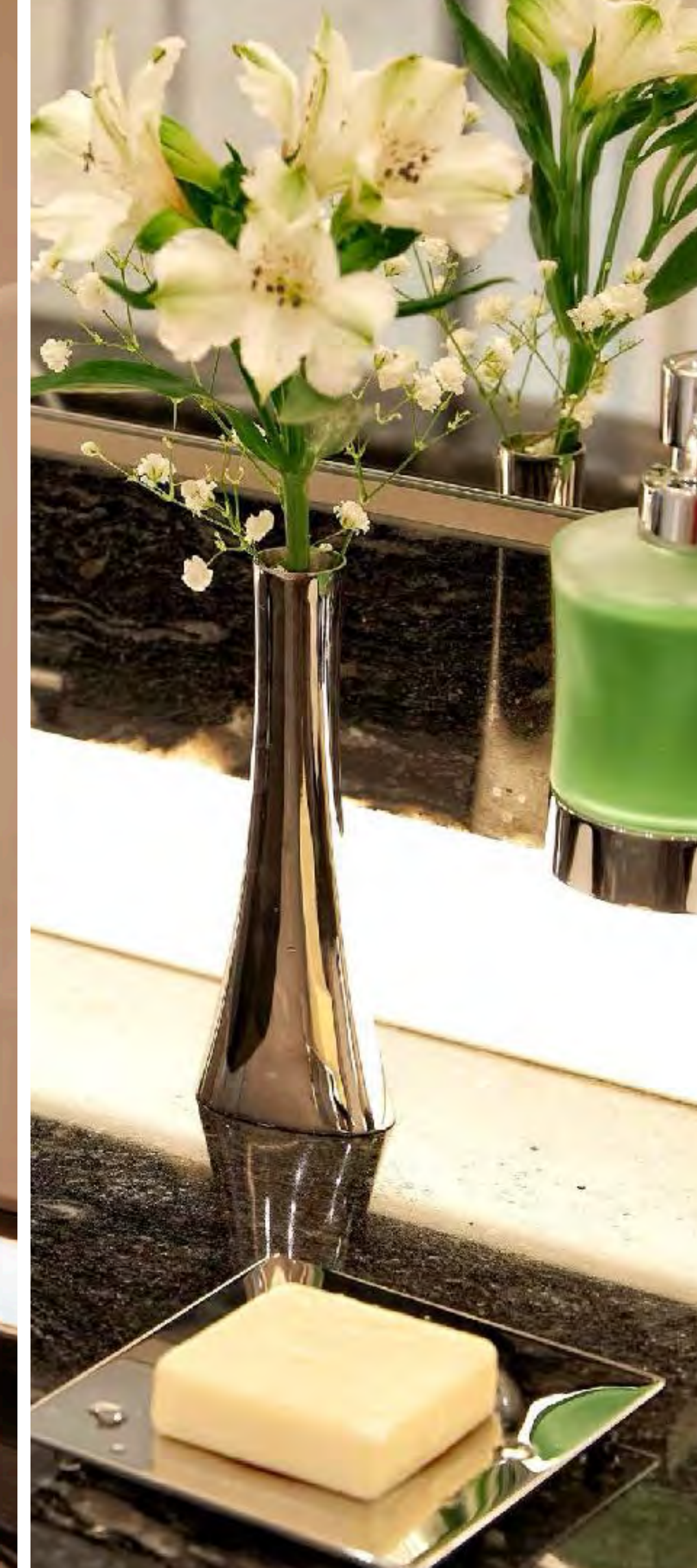


DOUBLE GUEST CABIN

The remaining guest quarters, comprising **two VIP cabins** and **four double cabins**, can be found forward on the main deck.



BATHROOM





DOUBLE GUEST CABIN



BATHROOM





VIP CABIN



BATHROOM





VIP CABIN



BATHROOM



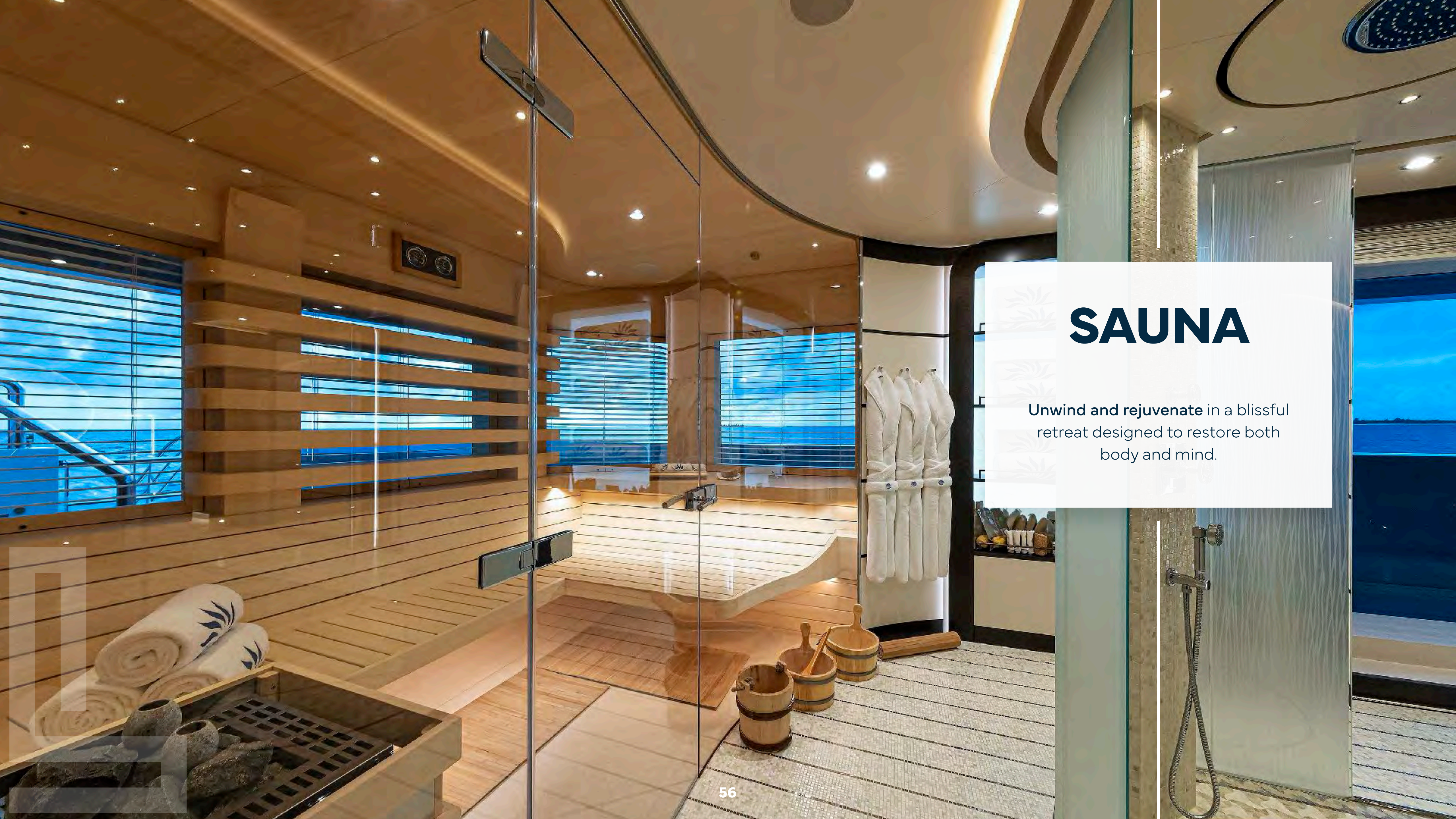
GYMNASIUM

Step into luxury within the confines of a **70-square-meter studio** that seamlessly blends wellness and opulence.

Enjoy **panoramic sea views** while engaging in a workout session with the state-of-the-art Technogym equipment.



GYMNASIUM

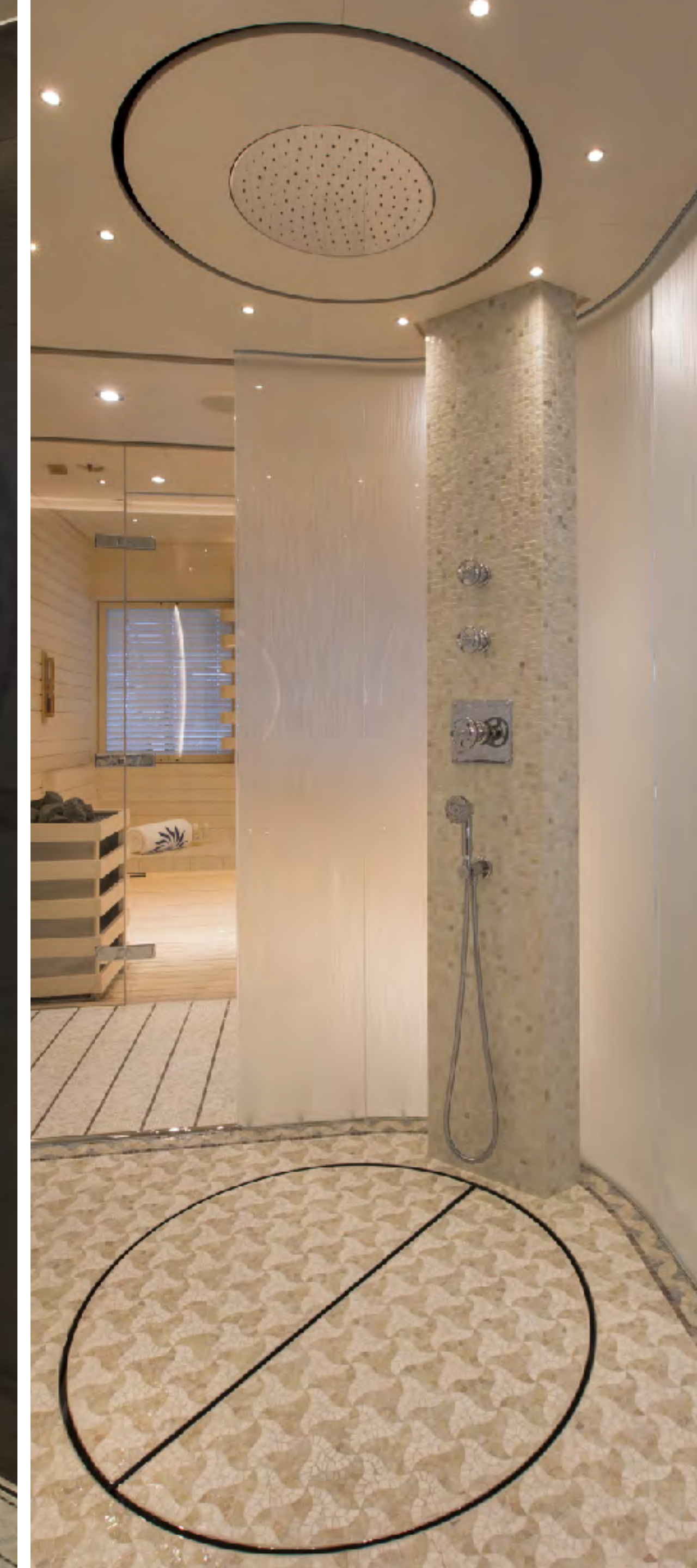


SAUNA

Unwind and rejuvenate in a blissful retreat designed to restore both body and mind.

HAMMAM

Immerse yourself in a luxurious retreat where a hammam and a walk-in rain shower await, creating a **sanctuary adorned with opulence.**

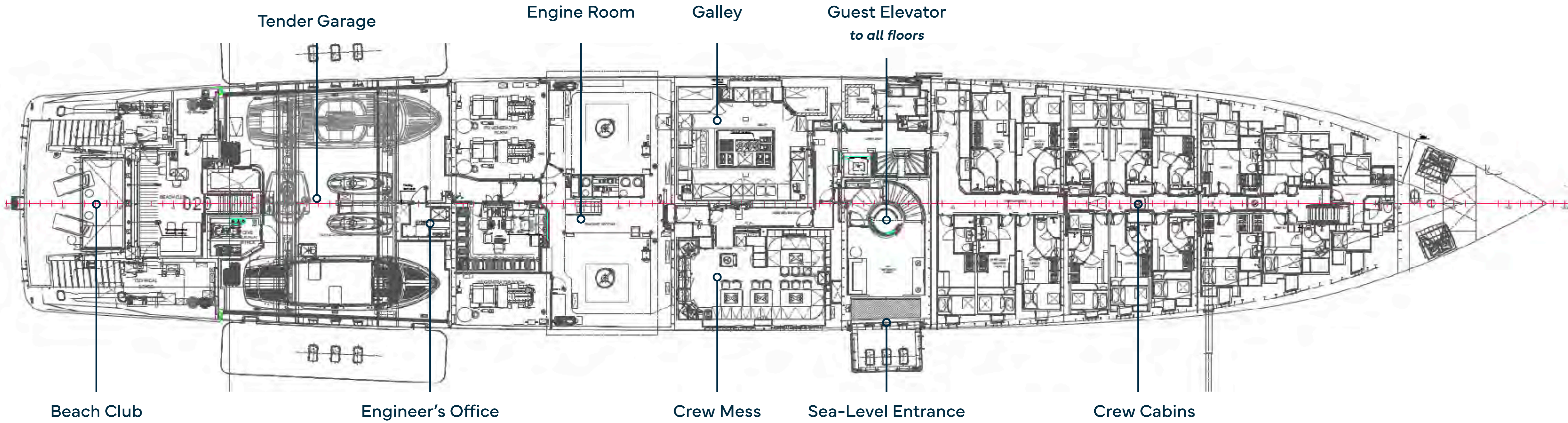




MASSAGE BEAUTY SALON

The ambiance is elevated by Prussian blue silk wallpaper adorned with meticulously hand-painted and appliquéd Japanese flowers, creating an **atmosphere of tranquility and sophistication** in the serene beauty salon.

LOWER DECK





BEACH CLUB



BEACH CLUB



BEACH CLUB

SEA-LEVEL ENTRANCE

Enjoy a leisurely drink **right at the water's edge** or take a thrilling dive straight into the sea.







ELEGANCE & PRIVACY

Enter the **realm of unparalleled elegance** with the extraordinary glass feature. Nearly 400 square meters of sheer translucence, a one-of-a-kind one-way polarized trompe l'oeil. From the inside, gaze out with absolute clarity, while from the outside, an impenetrable veil of privacy envelops the space.

This remarkable paradox of **total privacy** coupled with complete clarity is achieved through the meticulous thermo-bonding of 3-meter by 1.8-meter sheets of glass to the aluminum superstructure. The glass thickness gracefully varies based on its position, with 112 panes being concave, and 28 showcasing a unique combination of both concave and convex elements.

TENDER GARAGE

A dwelling for the two exceptional 10.5-meter Hodgdon tenders



TWIN-WIN TENDERS

The two exquisite 10.5-meter Hodgdon tenders epitomize unparalleled excellence.

Both the limousine and open tender showcase a **perfect blend** of **speed, stability,** and **exquisite craftsmanship.**

These tenders stand as a seamless extension of the yacht, embodying the highest standards of quality and luxurious comfort.





SPECIFICATION

CHARACTERISTICS

NAME:	DAR
BUILDER:	OCEANCO
YEAR BUILT:	2018
TYPE:	FAST DISPLACEMENT MOTOR YACHT
HULL NO.:	Y717
IMO:	1013066
CLASSIFICATION:	LLOYD'S REGISTER
FLAG:	CAYMAN ISLANDS
NAVAL ARCHITECT:	AZURE NAVAL ARCHITECTS B.V.
EXTERIOR DESIGNER:	LUIZ DE BASTO DESIGN
INTERIOR DESIGNER:	NUVOLARI & LENARD
CONSTRUCTION:	STEEL HULL ALUMINIUM SUPERSTRUCTURE TEAK DECKS
CRUISING SPEED:	13 KNOTS
MAXIMUM SPEED:	20 KNOTS
FUEL CONSUMPTION:	APPROX. 500 LITERS/HOUR @ 13 KNOTS
RANGE:	5,500NM @ 13 KNOTS
DISPLACEMENT:	2,355





ACCOMMODATION

OWNER:	1 x MASTER CABIN
GUEST:	2 x VIP CABINS 4 x DOUBLE CABINS
CREW:	1 x CAPTAIN CABIN 15 x CREW CABINS
TOTAL:	12 GUESTS IN 7 CABINS
CREW:	30 CREW IN 16 CABINS

DIMENSIONS

LENGTH OVERALL:	90.00 M (295'3")
LENGTH WATERLINE:	77.20 M (253'3")
BEAM:	14.20 M (46'7")
MAX DRAFT:	4.05 M (13'3")
GROSS TONNAGE:	2,926
NET TONNAGE:	877

TENDERS & WATER-SPORTS EQUIPMENT

TENDERS:

1 x 10.50M HODGDON YACHTS CUSTOM OPEN
1 x 10.50M HODGDON YACHTS CUSTOM LIMO
1 x 6.20M COBRA PATRONUS CREW TENDER

TOYS:

1 x WAVE RUNNER SEADOO GTR STD 230 (2021)
1 x JETSURF ULTRA SPORT
1 x FLITEBOARD
1 x AIRDRONE - DJI INSPIRE 2
1 x UNDERWATER DRONE - IBUBBLE
2 x WAVE RUNNER SEADOO GTX LTD 300 (2021)
2 x JETSKI YAMAHA SUPER JET
2 x 1 PERSON PRIJON KAYAK
4 x 2 PERSON BIWOK KAYAK
4 x SEABOB KAYAGO F5 SR
5 x GOCYCLE BICYCLE

DIVING EQUIPMENT:

(RENDEZ-VOUS DIVING ONLY)

BCD: SCUBA PRO
TANKS: LUXFER - 11LT AND 9LT
WET SUITS: SCUBA PRO - 3MM AND 5MM
FINS: MARES
MASKS: ATOMIC AQUATICS, OCEAN REEF
BOOTS: SCUBA PRO
WEIGHTS: SCUBA
PRO COMPUTER: SUUNTO
CAMERAS: GO PRO
ASSORTMENT OF SNORKELLING GEAR: CRESSI,
OCEAN REEF



TENDERS & WATER-SPORTS EQUIPMENT

INFLATABLES:

1 x SAIL BOAT - TIWAL INFLATABLE
1 x 10 X 6.6M INFLATABLE POOL - FREESTYLE
1 x ZORB (SPHERE FOR A PERSON TO STEP INTO AND ROLL ON THE WATER)
1 x 1 PERSON SUP - RED PADDLE
1 x 3 PERSON SUP - RED PADDLE

TOWABLES:

1 x WINDSURF - FANATIC
1 x KITESURF - CABIRINHA
1 x WATERSKI - JOBE
1 x KNEEBOARD - JOBE
1 x WAKEBOARD - JOBE
TOWABLES JOBE (BANANA, DONUT, BINAR, SONAR)

ACCESSORIES:

1 x 15M SLIDE - FREESTYLE
1 x LIQUID FORCE MAGIC CARPET 6' X 18'
LIFE VESTS AND HELMETS - LIQUID FORCE

GYM EQUIPMENT

1 x SKILLRUN TECHNOGYM
1 x BIKE TECHNOGYM
1 x EXCITE SYNCHRO
TECHNOGYM WEIGHTS
YOGA MATS



ENTERTAINMENT EQUIPMENT

TV ANTENNA:	2 X SEA TEL 6004
GENERAL:	MEDITERRANEAN: SKY UK, SKY ITALY CARIBBEAN: I DIRECT TV LATIN AMERICA DISH AIRPLAY, APPLE TV, NETFLIX, AMAZON PRIME, DISNEY, PARAMOUNT, SPOTIFY X-BOX OCULUS YACHTEYE THROUGHOUT THE VESSEL ALL DEVICES INCLUDING LIGHT AND TEMPERATURE ARE I-PAD CONTROLLED BACKGAMMON, CHESS, CARDS, MONOPOLY

SECURITY & SAFETY EQUIPMENT

SAFETY:	EPIRB SAILOR SE406-11 2 X SART SAILOR 11 9GHZ
SECURITY:	KABA CENTRAL ANTI-INTRUSION SYSTEM 2 X ANTI-PIRACY WATER CANNONS
FIRE FIGHTING:	MONITORING & ALARM SYSTEM CONSILLIUM HI FOG SYSTEM MARIOFF





COMMUNICATION EQUIPMENT

SATCOM:	SAILOR FBB500, FBB150
VHF:	SAILOR 6215, 6222, 2 X 6248
SSB:	SAILOR 6301
INMARSAT C:	2 X SAILOR 6110
IRIDIUM:	2 X SC4000
TELEPHONE EXCHANGE:	AVAYA
INTERCOM:	PA
VSAT:	2 X SEA TEL 5012
INTERNET:	2 X STARLINK MARITIME
GSM 4G/5G:	PEPWAVE

INTERNET PACKAGE

STARLINK MARITIME	50-100 MBPS
VSAT	MIR 8 MBPS CIR 2 MBPS

STARLINK WILL NOT BE PROVIDED IN AREAS WHERE THERE IS NO STARLINK COVERAGE.

COMMUNICATION PACKAGE IS INCLUDED IN THE CHARTER FEE AND WILL NOT BE CHARGED ON THE APA.

ON REQUEST:

THE COST TO UPGRADE TO A HIGHER VSAT SPEED IS ON THE CLIENT'S ACCOUNT.

A large, modern yacht is shown from a side profile, sailing on a calm sea. The scene is set at dusk or dawn, with a soft, low sun visible behind a range of mountains in the distance. The sky is a deep, dark blue, and the water has a subtle texture of small waves. The yacht is dark in color, with some lighter accents on its upper decks. The overall mood is serene and luxurious.

CHARTER RATES

2024 CHARTER RATES

HIGH SEASON
JULY AND AUGUST

€1,400,000

PER WEEK

PLUS VAT, PLUS COSTS (APA 30%)

LOW SEASON
ALL OTHER MONTHS

€1,200,000

PER WEEK

PLUS VAT, PLUS COSTS (APA 30%)

EVENTS

€1,400,000

PER WEEK

PLUS VAT, PLUS COSTS (APA 30%)

A Security Deposit of €100,000 applicable to all charters



**LARGE
YACHT
CORP.**

FOR INQUIRIES & MORE INFORMATION

VESA KAUKONEN

vesa@largeyachtcorp.com

+33 643 915 414

OFFICES

25 Boulevard Albert 1er,
98000 Monaco

Douglas Chambers,
North Quay Douglas,
IM1 4LA Isle of Man

www.largeyachtcorp.com