

An aerial photograph of a large, modern yacht named 'DAR' sailing on a deep blue sea. The yacht is white with a dark hull and features multiple decks with outdoor seating and a swimming pool. In the background, a coastal town is built on a hillside. The text 'DAR' is overlaid in large white letters on the left side of the image.

# DAR

FOR SALE

OCEANCO | 90 M (295.27 FT) | 2018



# DAR

Built by Oceanco, with exterior design by Luiz de Basto Design and interiors by Nuvolari & Lenard, the 90m yacht **DAR** is now exclusively offered for sale. DAR's layout deviates from contemporary yacht designs. Nearly 3,000 gross tons of volume have been allocated to each feature, providing **ample space**.

DAR can accommodate up to 14 guests in **complete privacy**, thanks to its unique setup. Designer Nuvolari Lenard has crafted welcoming interiors that seamlessly connect to the yacht's highly versatile exteriors. Her impressive features include **a complete owner's deck**, with a **private salon and jacuzzi**, a **wellness area**, and an **impressive beach club**.

## ASKING PRICE

€ 208,000,000 (EX VAT)

*Disclaimer: DAR artwork and personal effects are not included in the sale.  
Not for sale to U.S. residents in U.S. waters.*



# KEY FEATURES

## COMPLETE OWNER'S DECK

with fully private salon and jacuzzi  
pool deck forward, isolated from  
cameras in total privacy

## BEACH CLUB

prized space onboard for  
sunbath, cocktails, and  
much more

## 7 CABINS

for 14 guests: 1 x Owner,  
2 x VIPs , 4 x Double

## TWO HELIPADS

for private use







# KEY FEATURES

## ELEVATOR

Six person elevator serving all guest decks

## WELLNESS AREA

Hammam, sauna, massage/beauty salon

## POOL

with fresh water, counter current

## GYM

fully equipped and with floor-to-ceiling windows



The entire vessel exudes a **seamless elegance**. Glistening white balconies and walkways, along with the roofline, sheer line, transom, and bridge, create an illusion of perpetual motion, especially accentuated by the sharply angular bow.

White streaks appear suspended in time against the backdrop of the deep black hull and reflective mirror-glass superstructure, adding an extra layer of **captivating allure** to the scene.



***DAR*** LOOKS LIKE  
NO OTHER YACHT.



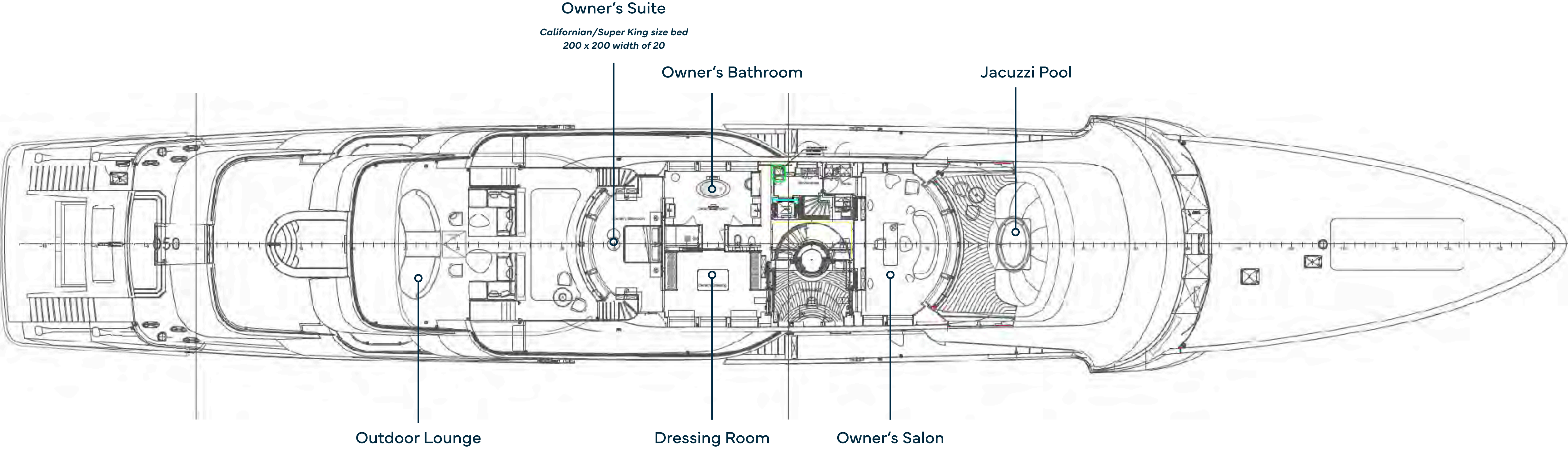








# OWNER'S DECK







# JACUZZI POOL

Forward is a jacuzzi pool with a shower – a space that cannot be overlooked.





JACUZZI POOL





JACUZZI POOL





**JACUZZI POOL**





JACUZZI POOL





**OWNER'S SALON**





**DRESSING ROOM**





# OWNER'S BATHROOM

The Owner's deck features a spa tub within the luxurious grand en suite, offering **ocean views** while you indulge in a bath.

Additionally, there is a separate terrace at the front, complete with a jacuzzi, providing **complete privacy**.





**OWNER'S BATHROOM**





**OWNER'S SUITE**



# OUTDOOR LOUNGE

An entire deck is **dedicated to the owner**. The 135-square-metre apartment has private access to a teak-top deck. It could also be set up for **entertaining, sport, or even as an outdoor cinema**.





**OUTDOOR LOUNGE**





**OUTDOOR LOUNGE**







**OUTDOOR LOUNGE**

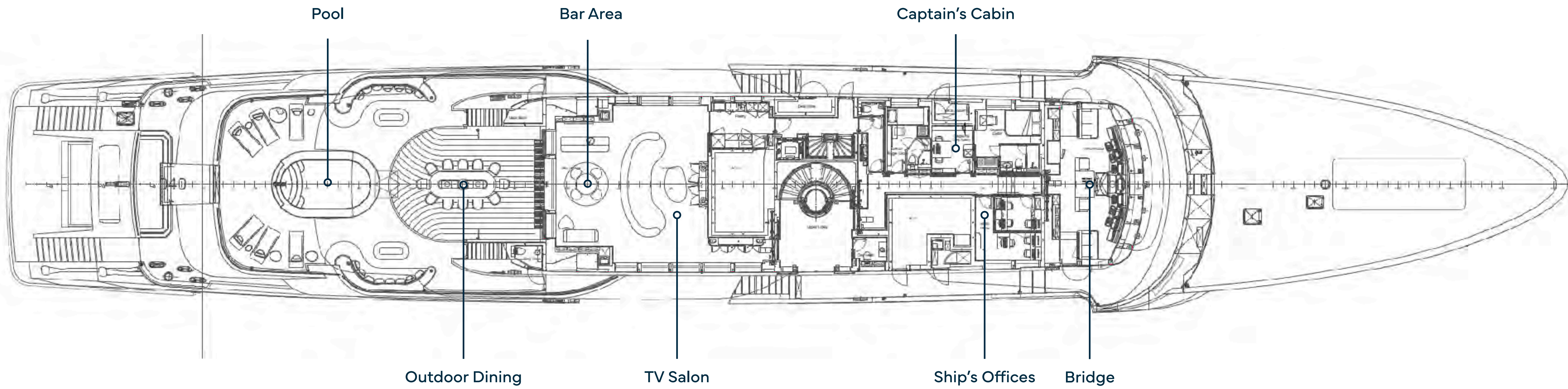




**OUTDOOR LOUNGE**



# UPPER DECK





# POOL

Immerse yourself in the inviting **6-metre pool**, where you can swim effortlessly against the gentle countercurrent.

Twin oversized umbrellas gracefully pivot to your desired angle, providing the perfect shade for your comfort. Unwind on the plush sunbeds or recline on the serpentine side sofas, creating a **haven of relaxation and leisure**.







POOL





**POOL**





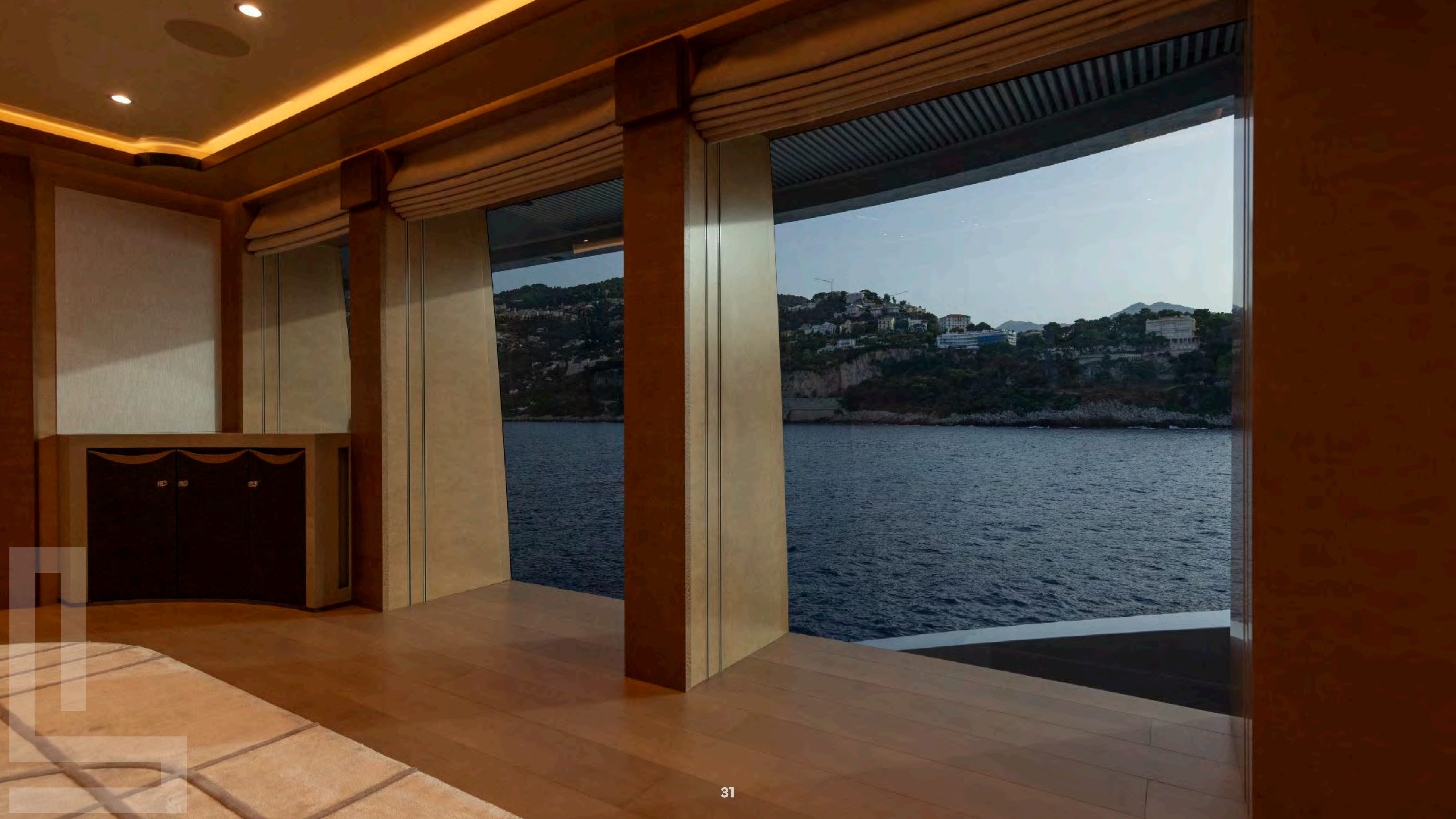
**OUTDOOR DINING**





**OUTDOOR DINING**









**BAR AREA**





**BAR AREA**









TV SALON



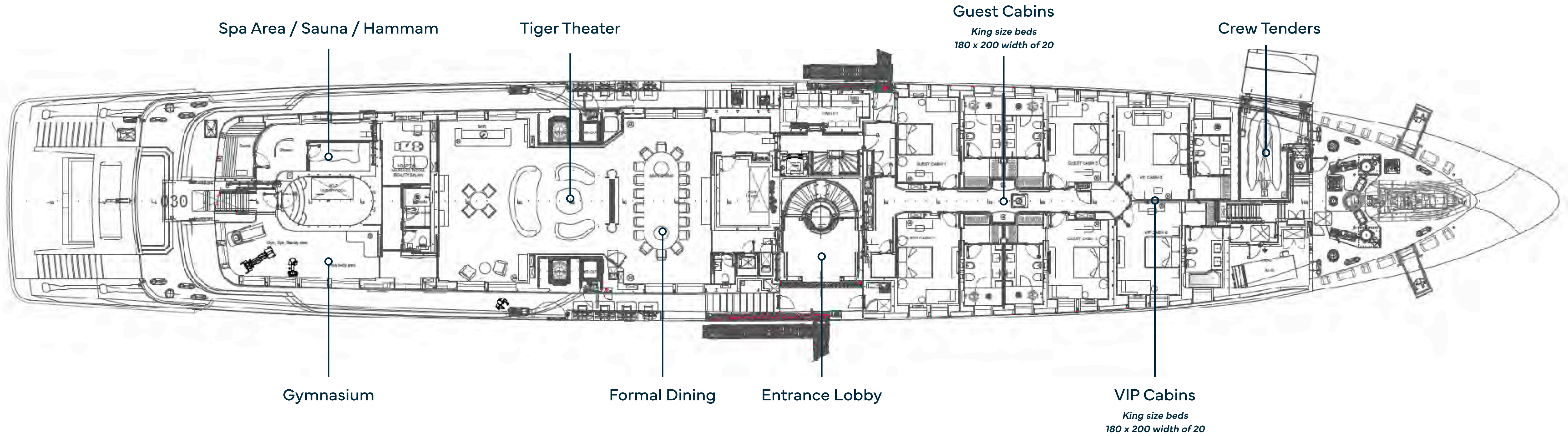




TV SALON



# MAIN DECK

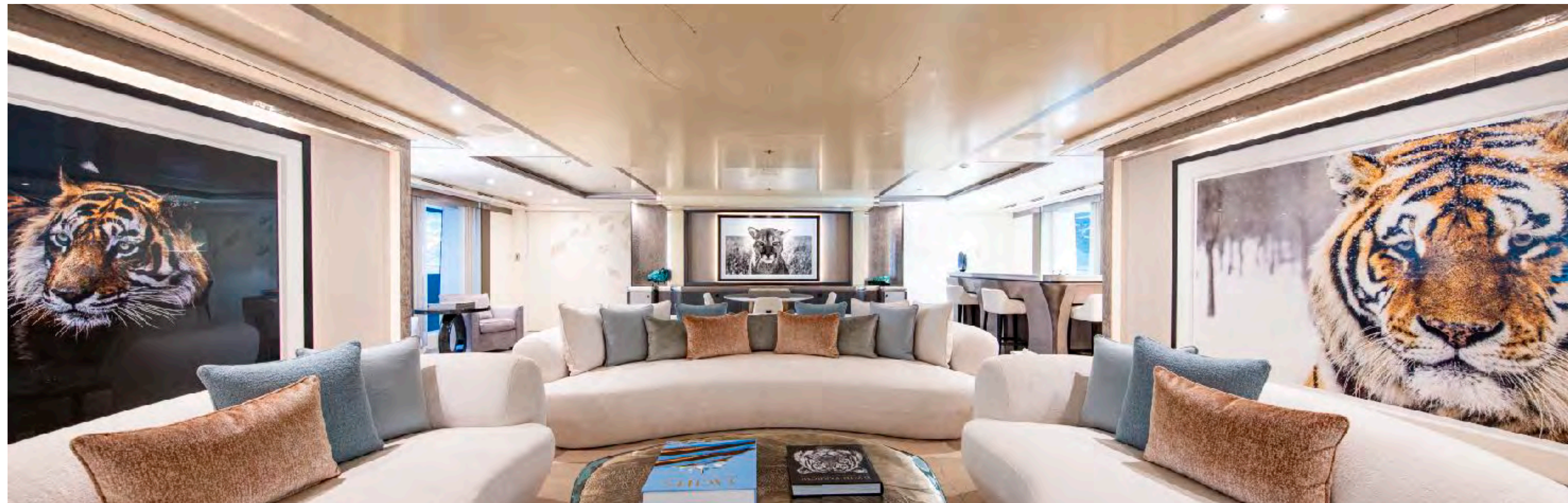


*\*Please note there are 6 sofa beds (1 in each Guest Cabin) that can be set up as a small single bed for children under 10 years old.  
Bed size: 70 x 190 cm.*



# TIGER THEATER

The main deck tiger theater offers a **large lounge** with bar, games area and TV screen.







**TIGER THEATER**





**TIGER THEATER**





**TIGER THEATER**





**FORMAL DINING**





**FORMAL DINING**









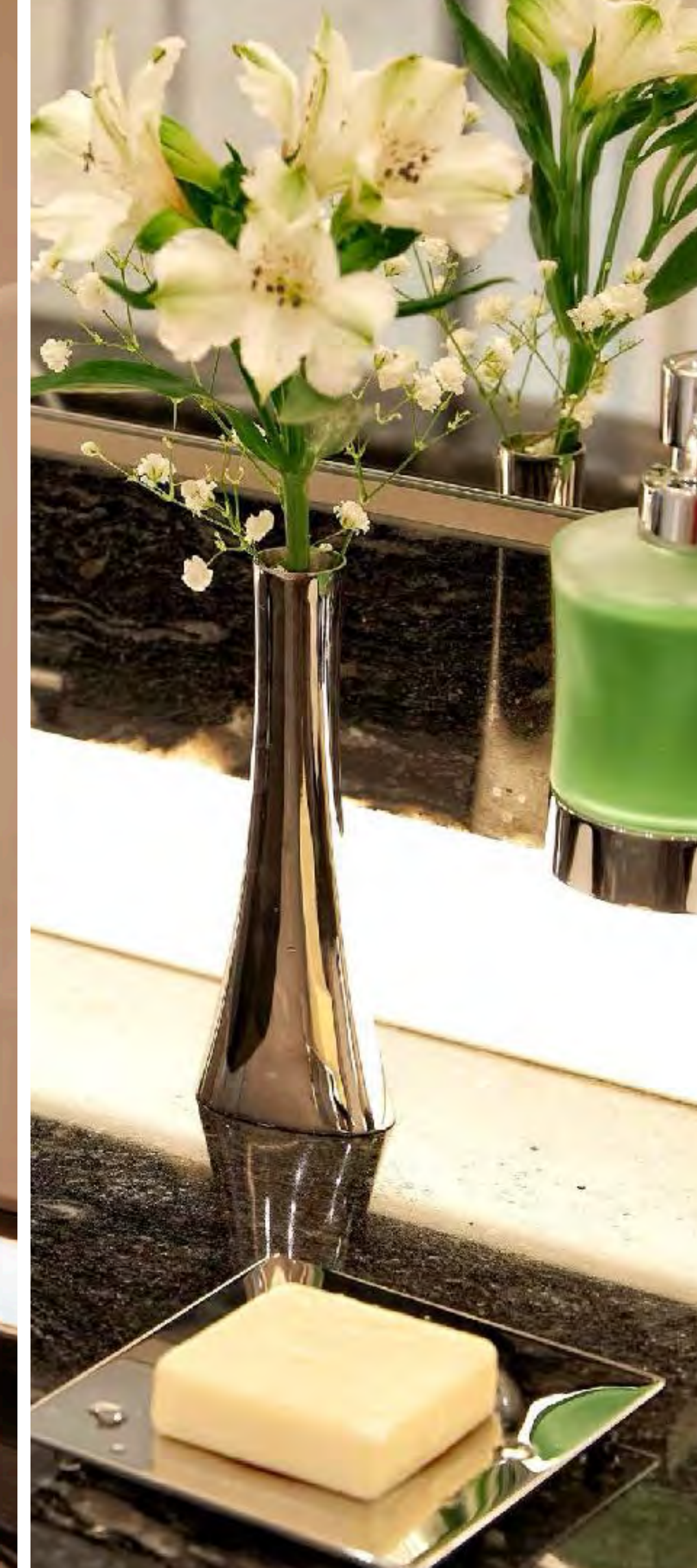
## DOUBLE GUEST CABIN

The remaining guest quarters, comprising **two VIP cabins** and **four double cabins**, can be found forward on the main deck.





**BATHROOM**







**DOUBLE GUEST CABIN**





**BATHROOM**







VIP CABIN





**BATHROOM**







VIP CABIN





**BATHROOM**





# GYMNASIUM

Step into luxury within the confines of a **70-square-meter studio** that seamlessly blends wellness and opulence.

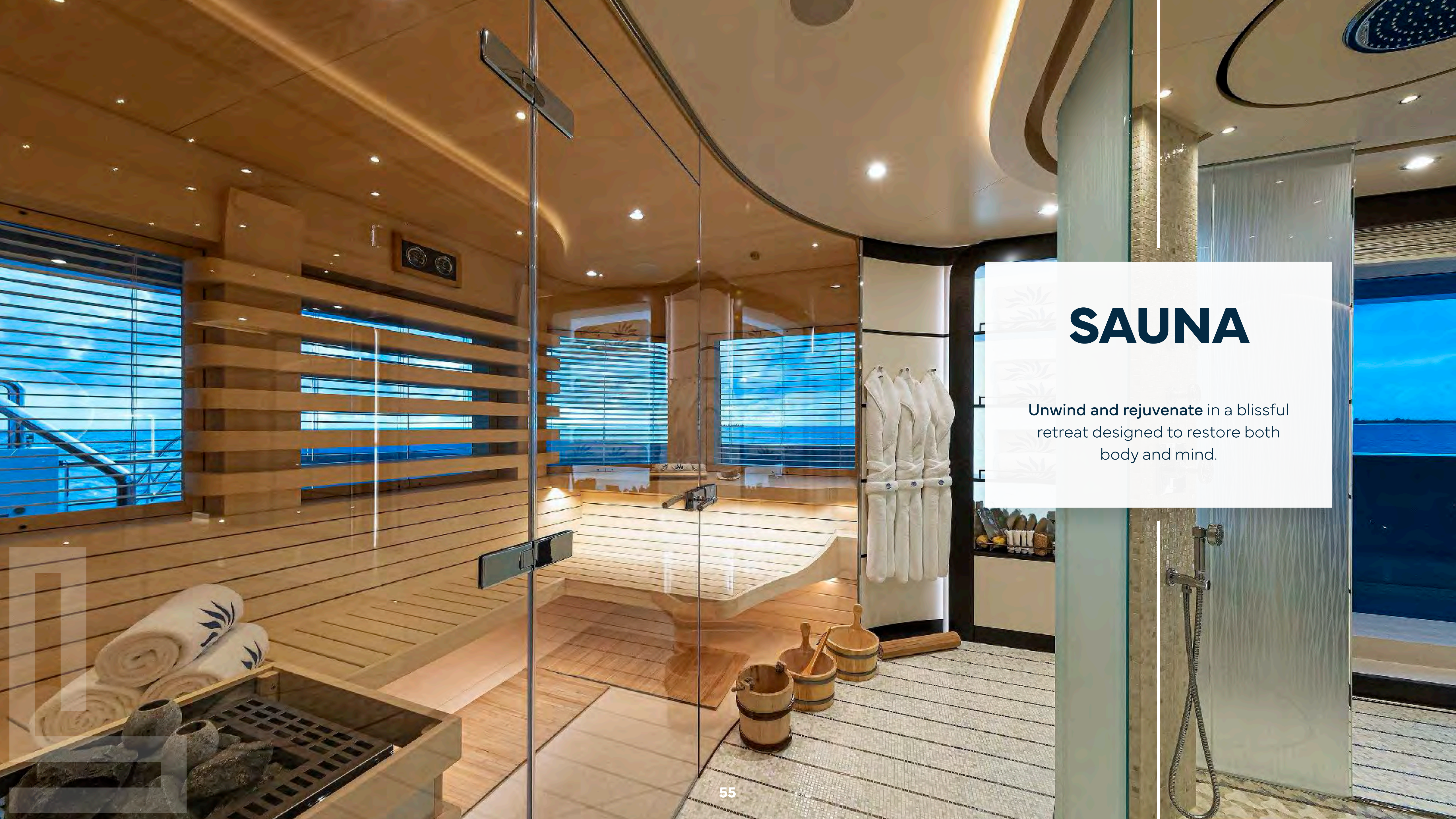
Enjoy **panoramic sea views** while engaging in a workout session with the state-of-the-art Technogym equipment.





**GYMNASIUM**





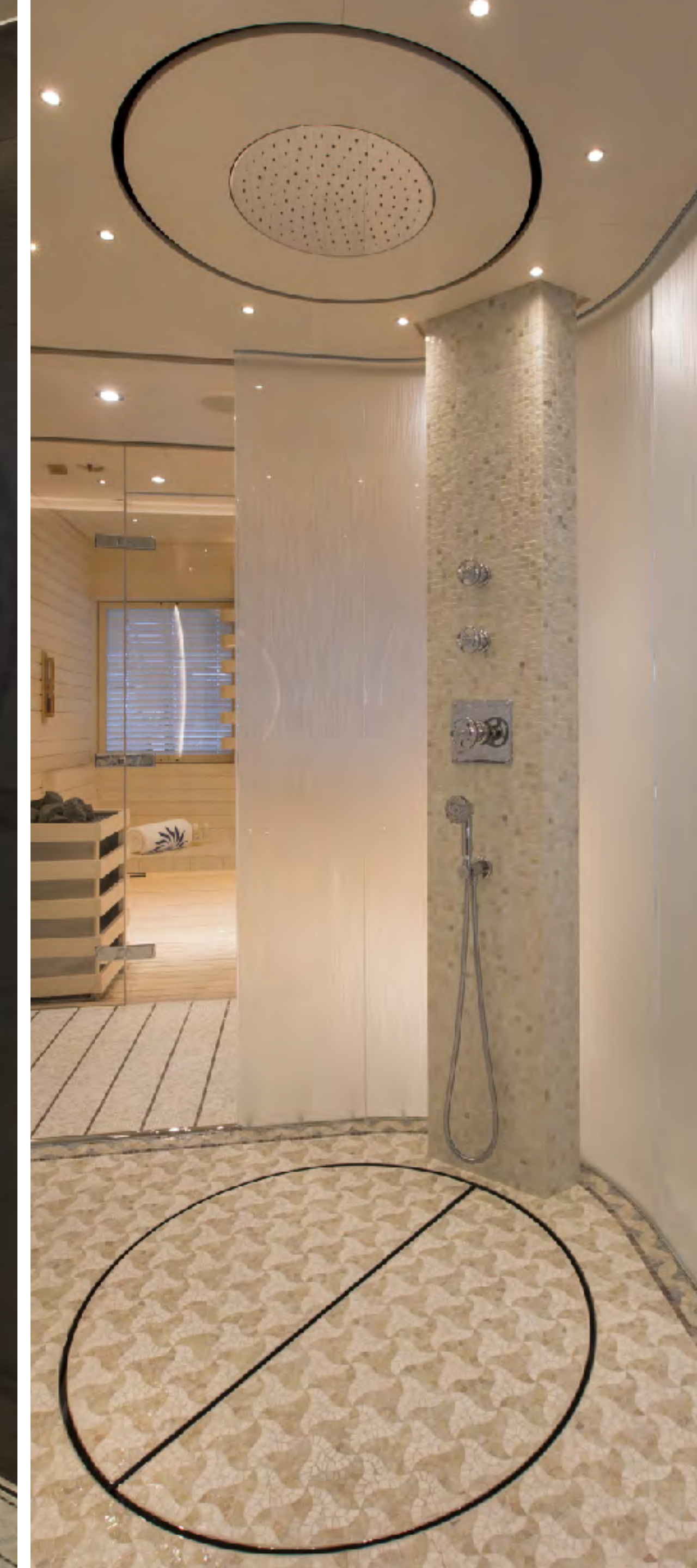
# SAUNA

Unwind and rejuvenate in a blissful retreat designed to restore both body and mind.



# HAMMAM

Immerse yourself in a luxurious retreat where a hammam and a walk-in rain shower await, creating a **sanctuary adorned with opulence.**





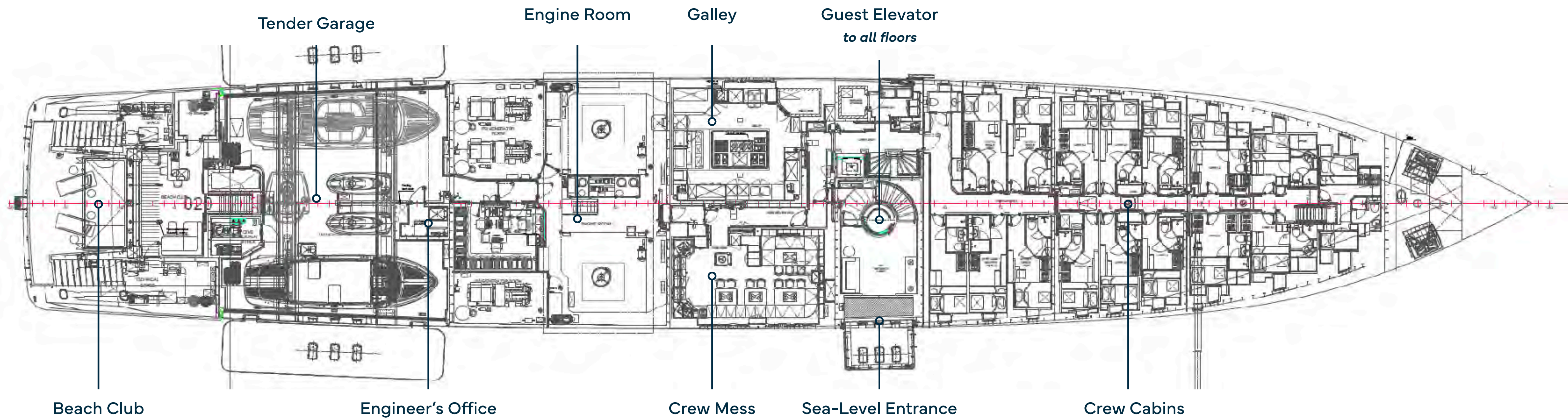


# MASSAGE BEAUTY SALON

The ambiance is elevated by Prussian blue silk wallpaper adorned with meticulously hand-painted and appliquéd Japanese flowers, creating an **atmosphere of tranquility and sophistication** in the serene beauty salon.



# LOWER DECK







BEACH CLUB





**BEACH CLUB**





**BEACH CLUB**



# SEA-LEVEL ENTRANCE

Enjoy a leisurely drink **right at the water's edge** or take a thrilling dive straight into the sea.









# TENDER GARAGE

A dwelling for the two exceptional 10.5-meter Hodgdon tenders





# TWIN-WIN TENDERS

The two exquisite 10.5-meter Hodgdon tenders epitomize unparalleled excellence.

Both the limousine and open tender showcase a **perfect blend** of **speed, stability,** and **exquisite craftsmanship.**

These tenders stand as a seamless extension of the yacht, embodying the highest standards of quality and luxurious comfort.





The image features a dark blue background with a complex geometric pattern of thin white lines. A prominent bright green vertical line descends from the top center, ending just above the word 'SPECIFICATION'. The word itself is rendered in a bold, bright green, sans-serif font. The overall aesthetic is clean, modern, and technical.

# **SPECIFICATION**



## CHARACTERISTICS

<b>NAME:</b>	DAR
<b>BUILDER:</b>	OCEANCO
<b>YEAR BUILT:</b>	2018
<b>TYPE:</b>	DISPLACEMENT MOTOR YACHT
<b>HULL NO.:</b>	Y717
<b>IMO:</b>	1013066
<b>CLASSIFICATION:</b>	LLOYD'S REGISTER
<b>FLAG:</b>	CAYMAN ISLANDS
<b>NAVAL ARCHITECT:</b>	AZURE NAVAL ARCHITECTS B.V.
<b>EXTERIOR DESIGNER:</b>	LUIZ DE BASTO DESIGN
<b>INTERIOR DESIGNER:</b>	NUVOLARI & LENARD
<b>CONSTRUCTION:</b>	STEEL HULL ALUMINIUM SUPERSTRUCTURE TEAK DECKS 2,355
<b>DISPLACEMENT:</b>	1 X FWD DECK - MAX LOAD 3.8T
<b>HELI DECKS:</b>	1 X SUN DECK - MAX LOAD 3.0T

## DIMENSIONS

<b>LENGTH OVERALL:</b>	90.00 M (295'3")
<b>LENGTH WATERLINE:</b>	77.20 M (253'3")
<b>BEAM:</b>	14.20 M (46'7")
<b>MAX DRAFT:</b>	4.05 M (13'3")
<b>GROSS TONNAGE:</b>	2,926
<b>NET TONNAGE:</b>	877







## SPEED & RANGE UNDER POWER

---

<b>MAXIMUM SPEED:</b>	20 KNOTS
<b>CRUISING SPEED:</b>	13 KNOTS
<b>FUEL CONSUMPTION:</b>	APPROX. 500 LITRES / HOUR @ 13 KNOTS
<b>RANGE:</b>	5,500NM @ 13 KNOTS

## CAPACITIES

---

<b>ACCOMMODATION:</b>	14 GUESTS IN 7 CABINS
<b>CREW:</b>	UP TO 31 X CREW IN 16 CABINS
<b>FUEL:</b>	278,000 LITRES / 73,440 US GALLONS
<b>PETROL:</b>	1,000 LITRES / 264 US GALLONS
<b>FRESH WATER:</b>	115,000 LITRES / 33,380 US GALLONS
<b>HOLDING TANK:</b>	14,700 LITRES / 3,883 US GALLONS
<b>LUBE OIL:</b>	5,000 LITRES / 1,321 US GALLONS
<b>DIRTY OIL:</b>	3,800 LITRES / 1,004 US GALLONS
<b>SLUDGE:</b>	5,900 LITRES / 1,559 US GALLONS
<b>GREY WATER:</b>	19,200 LITRES / 5,072 US GALLONS
<b>BLACK WATER:</b>	5,500 LITRES / 1,453 US GALLONS
<b>DECK WASH:</b>	27,000 LITRES / 7,133 US GALLONS
<b>POOL WATER:</b>	20,000 LITRES / 5,283 US GALLONS

## ACCOMMODATION

---

<b>OWNER:</b>	1 x MASTER CABIN
<b>GUEST:</b>	2 x VIP CABINS 4 x DOUBLE CABINS
<b>CREW:</b>	1 x CAPTAIN CABIN 15 x CREW CABINS



## MECHANICAL EQUIPMENT

<b>ENGINES:</b>	2 X 3,600KW (4,828HP) MTU 20V 4000 M73L, DIESEL
<b>ENGINE HOURS:</b>	4,022 (PORT) / 4,011 (STBD) AS OF MARCH 2024
<b>GENERATORS:</b>	3 X 498KW (668HP) MTU 12V 2000
<b>GENERATOR HOURS:</b>	7,200 / 7,500 / 8,000 AS OF MARCH 2023
<b>GEARBOX:</b>	REINTJES WAF 1963
<b>PROPULSION:</b>	TWIN SCREW FIX BLADE
<b>PROPELLERS:</b>	2 X SIP MARINE - 5 BLADES, 2500MM
<b>RUDDER ANGLE Y:</b>	MECHANICAL, ANALOG & DIGITAL
<b>STEERING SYSTEM:</b>	ROLLS ROYCE
<b>STABILISERS:</b>	2 X QUANTUM XT - ZERO SPEED
<b>BOW THRUSTER:</b>	VOITH GMBH & CO. KGA 400KW IN-LINE THRUSTER
<b>STERN THRUSTER:</b>	VETH 286KW FOLDABLE & AZUMITHING
<b>ELECTRICITY:</b>	380V / 240V / 24V
<b>SHORE POWER:</b>	2 X TRANSFORMERS - 230 / 400V 50HZ 579KVA
<b>BATTERIES:</b>	YES
<b>CHARGERS:</b>	SIEMENS
<b>CONVERTERS:</b>	SIEMENS
<b>HYDRAULICS:</b>	VAN DRIEL
<b>AIR CONDITIONING:</b>	HEINEN & HOPMANN
<b>WATER MAKER:</b>	HEM 8040 DUPLEX
<b>WATER SYSTEM:</b>	WATER SOFTENER & AG - S SILVER ION STERILIZERS
<b>TOILET SYSTEM:</b>	EVAC
<b>SEWAGE SYSTEM:</b>	HAMMAN
<b>FUEL CENTRIFUGE:</b>	SEPAR
<b>FUEL SEPARATOR:</b>	ALFA LAVAL
<b>GARBAGE CONVERTER:</b>	OMPECO







## NAVIGATION EQUIPMENT

---

<b>MAGNETIC COMPASS:</b>	CASSENS & PLATH
<b>GYRO COM:</b>	2 X RAYTHEON ANSCHUTZ STD22
<b>PASS:</b>	RAYTHEON ANSCHUTZ
<b>STEERING:</b>	SAM ELECTRONICS NACOS PLATINUM
<b>AUTOMATIC PILOT ECHO:</b>	ELAC LAZ5100
<b>SOUNDER:</b>	FARSOUNDER 500
<b>SONAR:</b>	SAM ELECTRONICS NACOS PLATINUM
<b>RADAR:</b>	SAM ELECTRONICS NACOS PLATINUM
<b>DP:</b>	SAAB R5
<b>AIS:</b>	3 X SAAB R5
<b>DGPS:</b>	SAAB R5
<b>GPS:</b>	SAM ELECTRONICS NACOS PLATINUM
<b>CHART PLOTTER:</b>	SAM 2918
<b>NAVTEX:</b>	SAM 4900
<b>LOG:</b>	OBSERVATOR
<b>WIND &amp; WEATHER:</b>	2 X SENSIN
<b>SEARCHLIGHTS:</b>	PANASONIC
<b>CAMERA(S):</b>	NIGHT VISION CAMERA – VECTOR VISION
<b>MISCELLANEOUS:</b>	HORN - KAHLENBERG

## COMMUNICATION EQUIPMENT

---

<b>SATCOM:</b>	SAILOR FBB500, FBB150
<b>VHF:</b>	SAILOR 6215, 6222, 2 X 6248
<b>SSB:</b>	SAILOR 6301
<b>INMARSAT C:</b>	2 X SAILOR 6110
<b>IRIDIUM:</b>	2 X SC4000
<b>TELEPHONE EXCHANGE:</b>	AVAYA
<b>INTERCOM:</b>	PA
<b>VSAT:</b>	2 X SEA TEL 5012
<b>INTERNET:</b>	2 X STARLINK MARITIME
<b>GSM 4G/5G:</b>	PEPWAVE



## DECK EQUIPMENT

<b>ANCHOR WINDLASSES:</b>	2 X STEEN & CO GMBH
<b>AFT WARPING CAPSTANS:</b>	2 X STEEN & CO GMBH
<b>ANCHORS:</b>	2 X HHP PULL N TYPE - 1,080KG EACH
<b>ANCHOR CHAINS:</b>	2 X 220M - 36MM Ø
<b>BOAT CRANE &amp; DAVITS:</b>	CRAMM
<b>PASSERELLE:</b>	STAALART
<b>SIDE BOARDING LADDER:</b>	HYDROMAR
<b>SIDE BOARDING GANGWAY:</b>	HYDROMAR
<b>POOL / JACUZZI:</b>	YES NEW WIND-PROTECTION GLASS ADDED - UPPER DECK POOL AREA (2021)
<b>SWIMMING PLATFORM:</b>	YES
<b>GUEST ELEVATOR:</b>	YES
<b>AWNINGS:</b>	AMBER
<b>COVERS:</b>	YES

## ENTERTAINMENT EQUIPMENT

<b>TV ANTENNA:</b>	2 X SEA TEL 6004
<b>GENERAL:</b>	MEDITERRANEAN: SKY UK, SKY ITALY CARIBBEAN: I DIRECT TV LATIN AMERICA DISH AIRPLAY, APPLE TV, NETFLIX, AMAZON PRIME, DISNEY, PARAMOUNT, SPOTIFY X-BOX OCULUS YACHT EYE THROUGHOUT THE VESSEL ALL DEVICES INCLUDING LIGHT AND TEMPERATURE ARE I-PAD CONTROLLED BACKGAMMON, CHESS, CARDS, MONOPOLY







## GALLEY & LAUNDRY EQUIPMENT

---

### GALLEY:

BIJVANCK CENTRAL COOKING ISLAND INCLUDING:  
INDUCTION PLATES, FOOD HEAT LAMP, GRIDDLE PLATE,  
SALAMANDER, WARMING OVEN, FRYER, COLD TAP, ETC  
RATIONAL OVEN  
EFFEUNO PIZZA OVEN  
FOSTER FREEZER  
SIRMAN BLAST FREEZER  
GRAM FRIDGE  
HOBART DISHWASHER  
ZIP HYDROTAP  
PANASONIC MICROWAVE  
VARIOUS ACCESSORIES

### PANTRY:

MAIN DECK, UPPER DECK & OWNER'S DECK  
FRIDGES, ICE MAKERS, ZIP HYDROTAPS, MICROWAVES, WINE  
COOLER FRIDGES, ETC)

### LAUNDRY:

5 X MIELE PROFESSIONAL WASHING MACHINES  
5 X MIELE PROFESSIONAL DRYERS  
GHIDINI STEAM IRON  
MIELE ROTARY IRON

## SECURITY & SAFETY EQUIPMENT

---

### SAFETY:

EPIRB SAILOR SE406-11  
2 X SART SAILOR 11 9GHZ

### SECURITY:

KABA CENTRAL ANTI-INTRUSION SYSTEM  
2 X ANTI-PIRACY WATER CANNONS

### FIRE FIGHTING:

MONITORING & ALARM SYSTEM CONSILLIUM  
HI FOG SYSTEM MARIOFF



## TENDERS & WATER-SPORTS EQUIPMENT

### INFLATABLES:

1 x SAIL BOAT - TIWAL INFLATABLE  
1 x 10 X 6.6M INFLATABLE POOL - FREESTYLE  
1 x ZORB (SPHERE FOR A PERSON TO STEP INTO AND ROLL ON THE WATER)  
1 x 1 PERSON SUP - RED PADDLE  
1 x 3 PERSON SUP - RED PADDLE

### TOWABLES:

1 x WINDSURF - FANATIC  
1 x KITESURF - CABIRINHA  
1 x WATERSKI - JOBE  
1 x KNEEBOARD - JOBE  
1 x WAKEBOARD - JOBE  
TOWABLES JOBE (BANANA, DONUT, BINAR, SONAR)

### ACCESSORIES:

1 x 15M SLIDE - FREESTYLE  
1 x LIQUID FORCE MAGIC CARPET 6' X 18'  
LIFE VESTS AND HELMETS - LIQUID FORCE

## GYM & WELLNESS

### GYM:

1 x SKILLRUN TECHNOGYM  
1 x BIKE TECHNOGYM  
1 x EXCITE SYNCHRO  
TECHNOGYM WEIGHTS  
YOGA MATS

### WELLNESS:

HAMMAM  
SAUNA  
MASSAGE / BEAUTY SALON







## TENDERS & WATER-SPORTS EQUIPMENT

---

### TENDERS:

1 x 10.50M HODGDON YACHTS CUSTOM OPEN  
1 x 10.50M HODGDON YACHTS CUSTOM LIMO  
1 x 6.20M COBRA PATRONUS CREW TENDER

### TOYS:

1 x WAVE RUNNER SEADOO GTR STD 230 (2021)  
1 x JETSURF ULTRA SPORT  
1 x FLITEBOARD  
1 x AIRDRONE - DJI INSPIRE 2  
1 x UNDERWATER DRONE - IBUBBLE  
2 x WAVE RUNNER SEADOO GTX LTD 300 (2021)  
2 x JETSKI YAMAHA SUPER JET  
2 x 1 PERSON PRIJON KAYAK  
4 x 2 PERSON BIWOK KAYAK  
4 x SEABOB KAYAGO F5 SR  
5 x GOCYCLE BICYCLE

### DIVING EQUIPMENT:

BCD: SCUBA PRO  
TANKS: LUXFER - 11LT AND 9LT  
WET SUITS: SCUBA PRO - 3MM AND 5MM  
FINS: MARES  
MASKS: ATOMIC AQUATICS, OCEAN REEF  
BOOTS: SCUBA PRO  
WEIGHTS: SCUBA  
PRO COMPUTER: SUUNTO  
CAMERAS: GO PRO  
ASSORTMENT OF SNORKELLING GEAR: CRESSI, OCEAN REEF





**LARGE  
YACHT  
CORP.**

**FOR INQUIRIES & MORE INFORMATION**

**VESA KAUKONEN**

vesa@largeyachtcorp.com

+33 643 915 414

**OFFICES**

25 Boulevard Albert 1er,  
98000 Monaco

Douglas Chambers,  
North Quay Douglas,  
IM1 4LA Isle of Man

[www.largeyachtcorp.com](http://www.largeyachtcorp.com)