

An aerial photograph of a large, modern yacht named 'DAR' sailing on a deep blue sea. The yacht is white with a dark hull and features multiple decks with outdoor seating and a swimming pool. In the background, a coastal town is built on a hillside. The text 'DAR' is overlaid in large white letters, and 'FOR SALE' is in smaller green letters. At the bottom, technical specifications are provided.

DAR

FOR SALE

OCEANCO | 90 M (295.27 FT) | 2018

DAR

Built by Oceanco, with exterior design by Luiz de Basto Design and interiors by Nuvolari & Lenard/Valentina Zannier Interiors, the 90m yacht **DAR** is now exclusively offered for sale. DAR's layout deviates from contemporary yacht designs. Nearly 3,000 gross tons of volume have been allocated to each feature, providing **ample space**.

DAR can accommodate up to 14 guests in **complete privacy**, thanks to its unique setup. The designers Nuvolari & Lenard/Valentina Zannier Interiors has crafted welcoming interiors that seamlessly connect to the yacht's highly versatile exteriors. Her impressive features include **a complete owner's deck**, with a **private salon and jacuzzi**, a **wellness area**, and an **impressive beach club**.

ASKING PRICE

€ 208,000,000 (EX VAT)

*Disclaimer: DAR artwork and personal effects are not included in the sale.
Not for sale to U.S. residents in U.S. waters.*

KEY FEATURES

COMPLETE OWNER'S DECK

with fully private salon and jacuzzi
pool deck forward

BEACH CLUB

prized space onboard for
sunbath, cocktails, and
much more

7 CABINS

for 14 guests: 1 x Owner,
2 x VIPs , 4 x Double

TWO HELIPADS

for private use



KEY FEATURES

ELEVATOR

Six person elevator serving all guest decks

WELLNESS AREA

Hammam, sauna, massage/beauty salon

POOL

with fresh water, counter current

GYM

fully equipped and with floor-to-ceiling windows

The entire vessel exudes a **seamless elegance**. Glistening white balconies and walkways, along with the roofline, sheer line, transom, and bridge, create an illusion of perpetual motion, especially accentuated by the sharply angular bow.

White streaks appear suspended in time against the backdrop of the deep black hull and reflective mirror-glass superstructure, adding an extra layer of **captivating allure** to the scene.

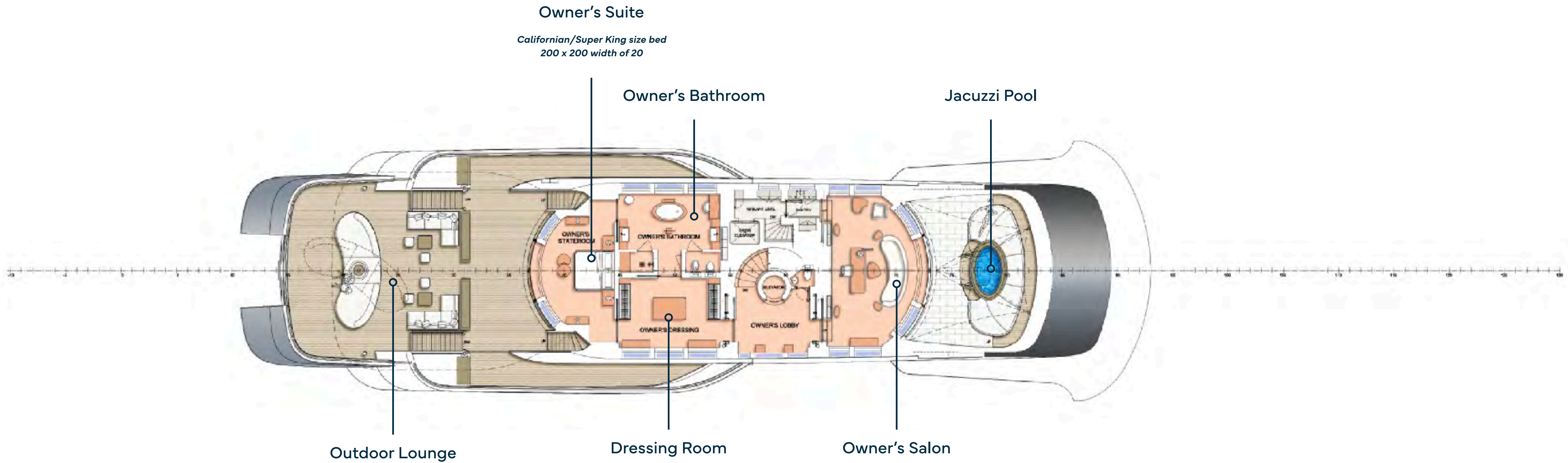


DAR LOOKS LIKE
NO OTHER YACHT.





OWNER'S DECK



JACUZZI POOL

Forward is a jacuzzi pool with a shower – a space that cannot be overlooked.



JACUZZI POOL



JACUZZI POOL



JACUZZI POOL



JACUZZI POOL



OWNER'S SALON



DRESSING ROOM

OWNER'S BATHROOM

The Owner's deck features a spa tub within the luxurious grand en suite, offering **ocean views** while you indulge in a bath.

Additionally, there is a separate terrace at the front, complete with a jacuzzi, providing **complete privacy**.



OWNER'S BATHROOM



OWNER'S SUITE



OUTDOOR LOUNGE

An entire deck is **dedicated to the owner**. The 135-square-metre apartment has private access to a teak-top deck. It could also be set up for **entertaining, sport, or even as an outdoor cinema**.



OUTDOOR LOUNGE



OUTDOOR LOUNGE



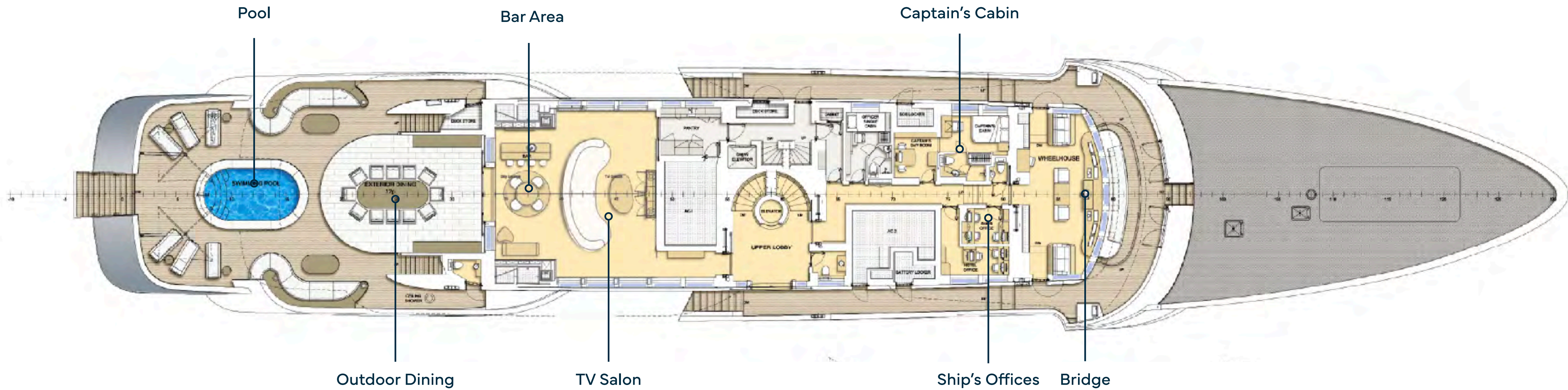


OUTDOOR LOUNGE



OUTDOOR LOUNGE

UPPER DECK



POOL

Immerse yourself in the inviting **6-metre pool**, where you can swim effortlessly against the gentle countercurrent.

Twin oversized umbrellas gracefully pivot to your desired angle, providing the perfect shade for your comfort. Unwind on the plush sunbeds or recline on the serpentine side sofas, creating a **haven of relaxation and leisure**.



POOL



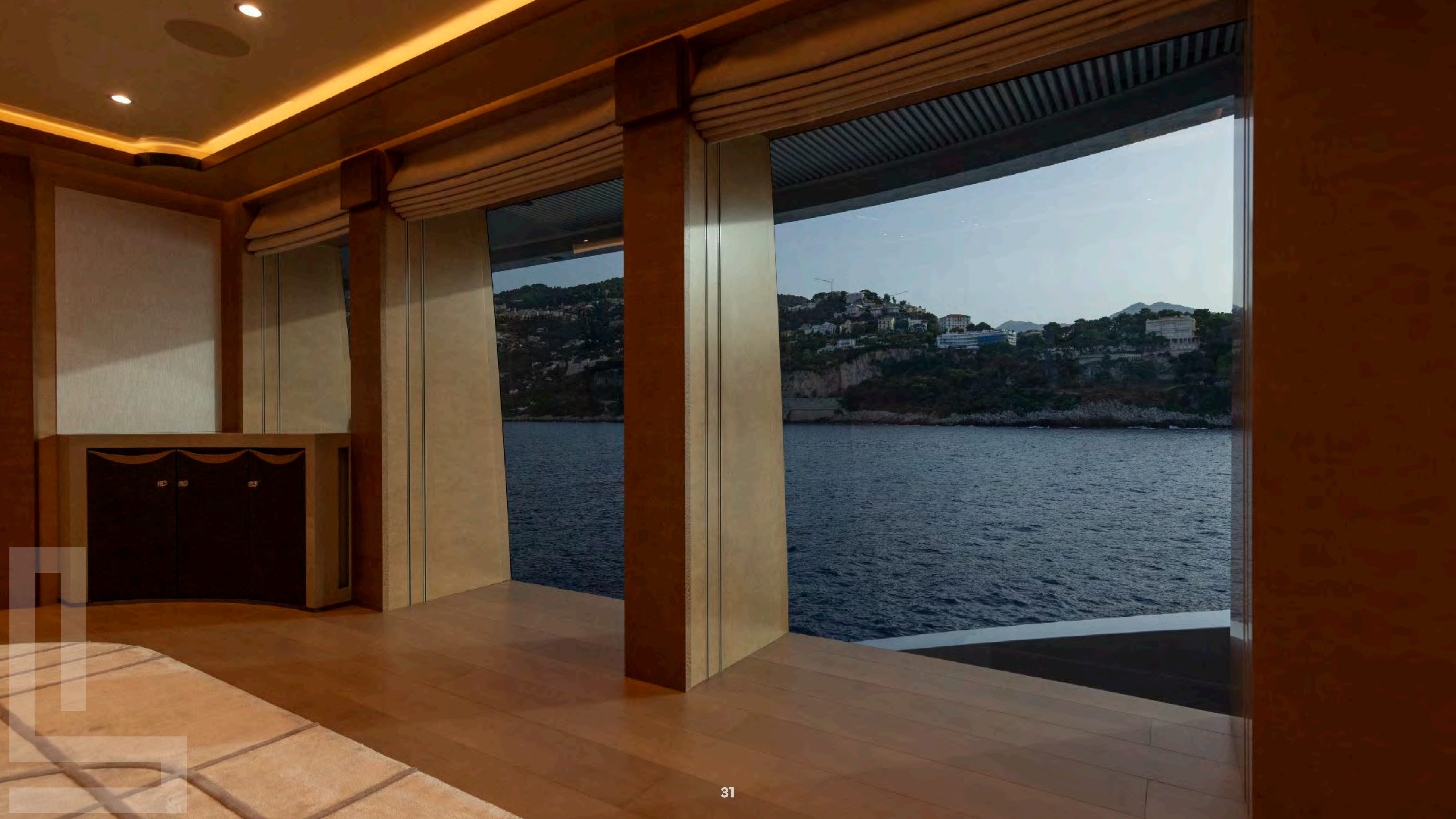
POOL



OUTDOOR DINING



OUTDOOR DINING





BAR AREA



BAR AREA





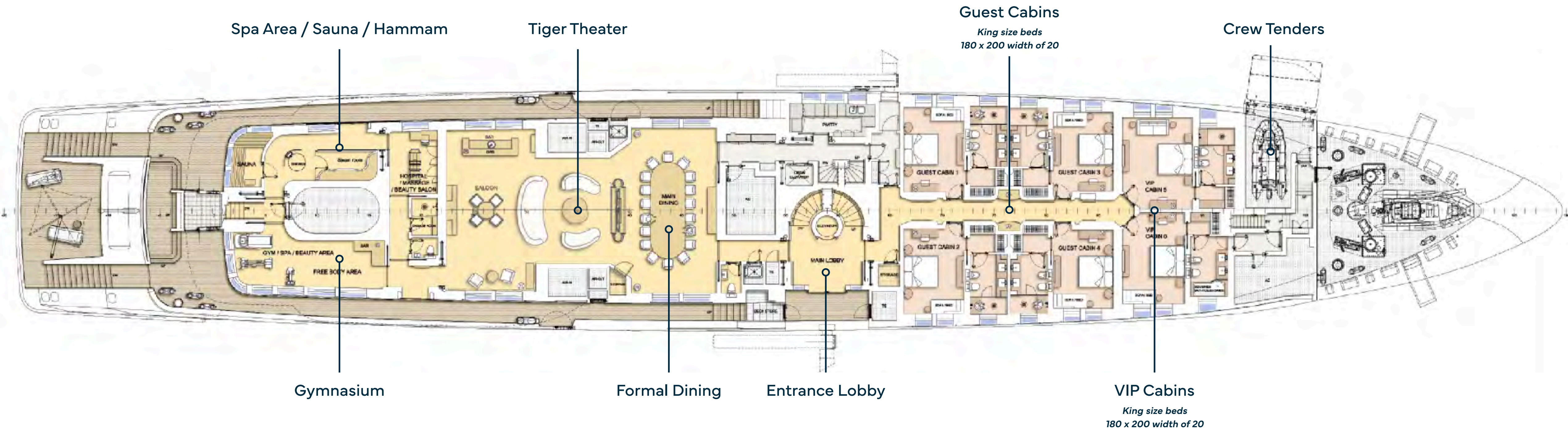
TV SALON





TV SALON

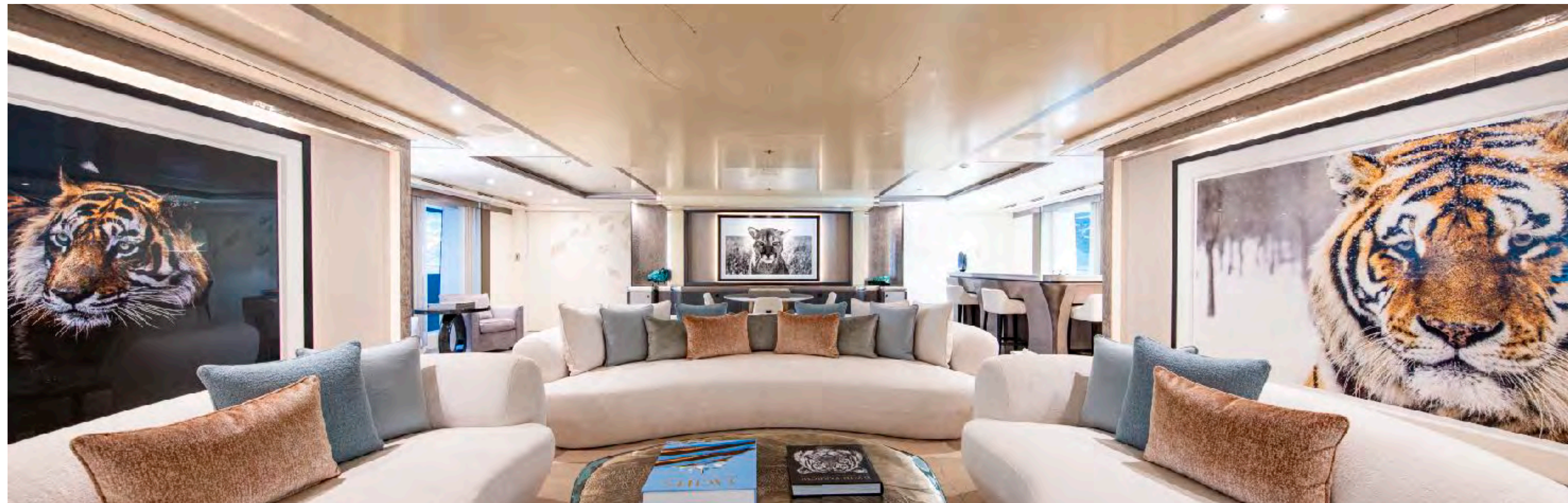
MAIN DECK



**Please note there are 6 sofa beds (1 in each Guest Cabin) that can be set up as a small single bed for children under 10 years old.
Bed size: 70 x 190 cm.*

TIGER THEATER

The main deck tiger theater offers a **large lounge** with bar, games area and TV screen.





TIGER THEATER



TIGER THEATER



TIGER THEATER



FORMAL DINING



FORMAL DINING







DOUBLE GUEST CABIN

The remaining guest quarters, comprising **two VIP cabins** and **four double cabins**, can be found forward on the main deck.



BATHROOM



DOUBLE GUEST CABIN



BATHROOM



VIP CABIN



VIP CABIN



VIP CABIN



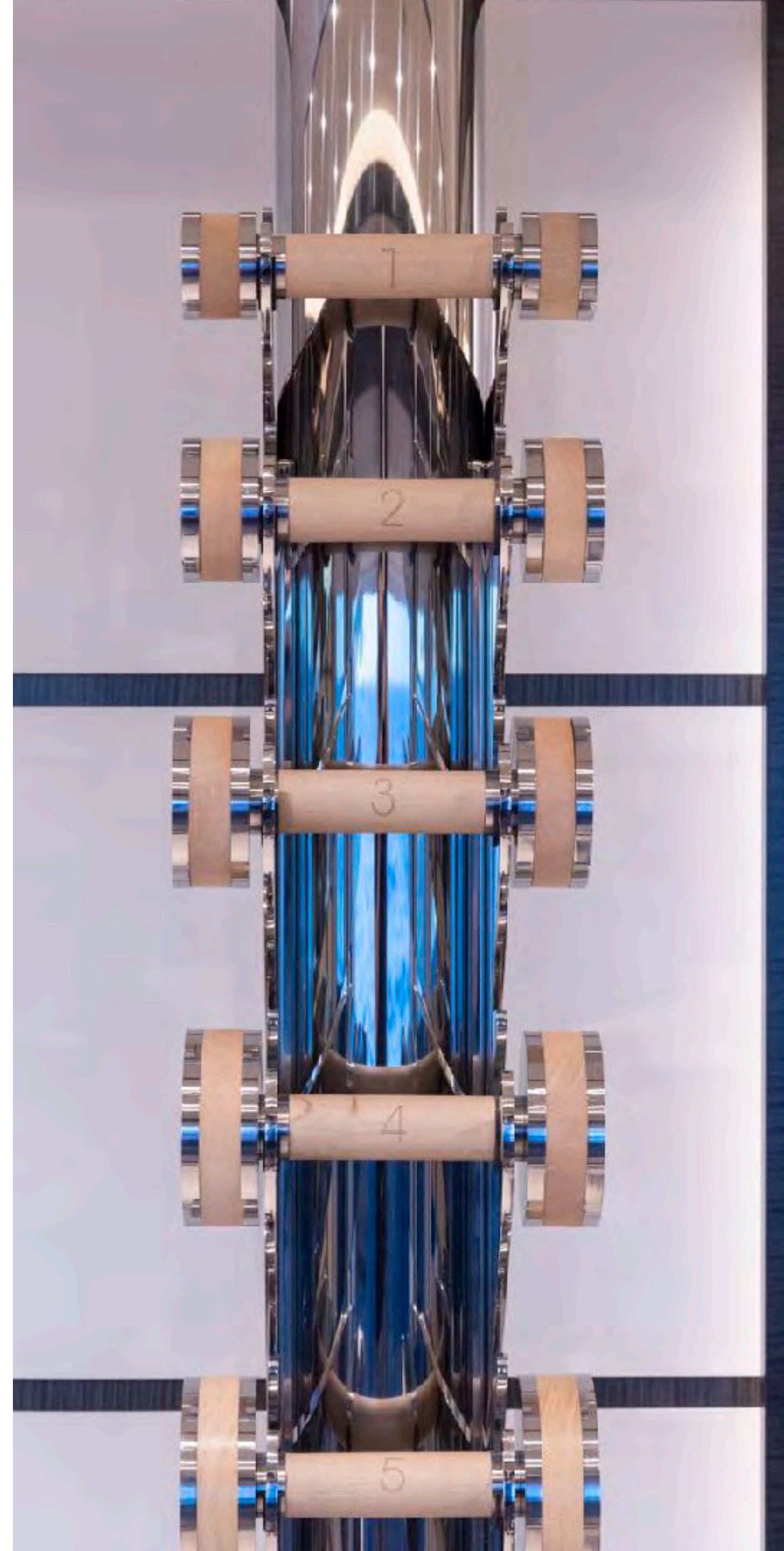
GYMNASIUM

Step into luxury within the confines of a **70-square-meter studio** that seamlessly blends wellness and opulence.

Enjoy **panoramic sea views** while engaging in a workout session with the state-of-the-art Technogym equipment.



GYMNASIUM





GYMNASIUM



GYMNASIUM



GYMNASIUM

The image shows the interior of a modern wooden sauna. The walls, ceiling, and benches are made of light-colored wood. A large window on the right side offers a view of a lake and mountains. A white towel with a blue floral pattern is draped over the right bench. A small digital display is mounted on the wall above the window. The overall atmosphere is warm and relaxing.

SAUNA

Unwind and rejuvenate in a blissful retreat designed to restore both body and mind.



SAUNA

HAMMAM

Immerse yourself in a luxurious retreat where a hammam and a walk-in rain shower await, creating a **sanctuary adorned with opulence.**



HAMMAM



HAMMAM



MASSAGE BEAUTY SALON

The ambiance is elevated by Prussian blue silk wallpaper adorned with meticulously hand-painted and appliquéd Japanese flowers, creating an **atmosphere of tranquility and sophistication** in the serene beauty salon.



MASSAGE BEAUTY SALON

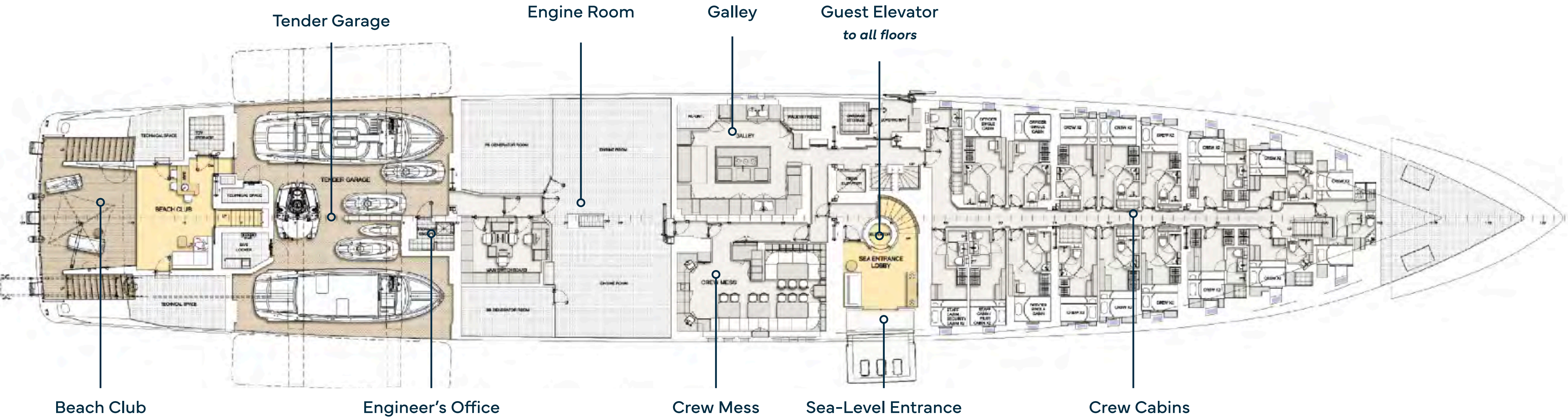
MASSAGE BEAUTY SALON



MASSAGE BEAUTY SALON



LOWER DECK



Tender Garage

Engine Room

Galley

Guest Elevator
to all floors

Beach Club

Engineer's Office

Crew Mess

Sea-Level Entrance

Crew Cabins



BEACH CLUB



BEACH CLUB



BEACH CLUB



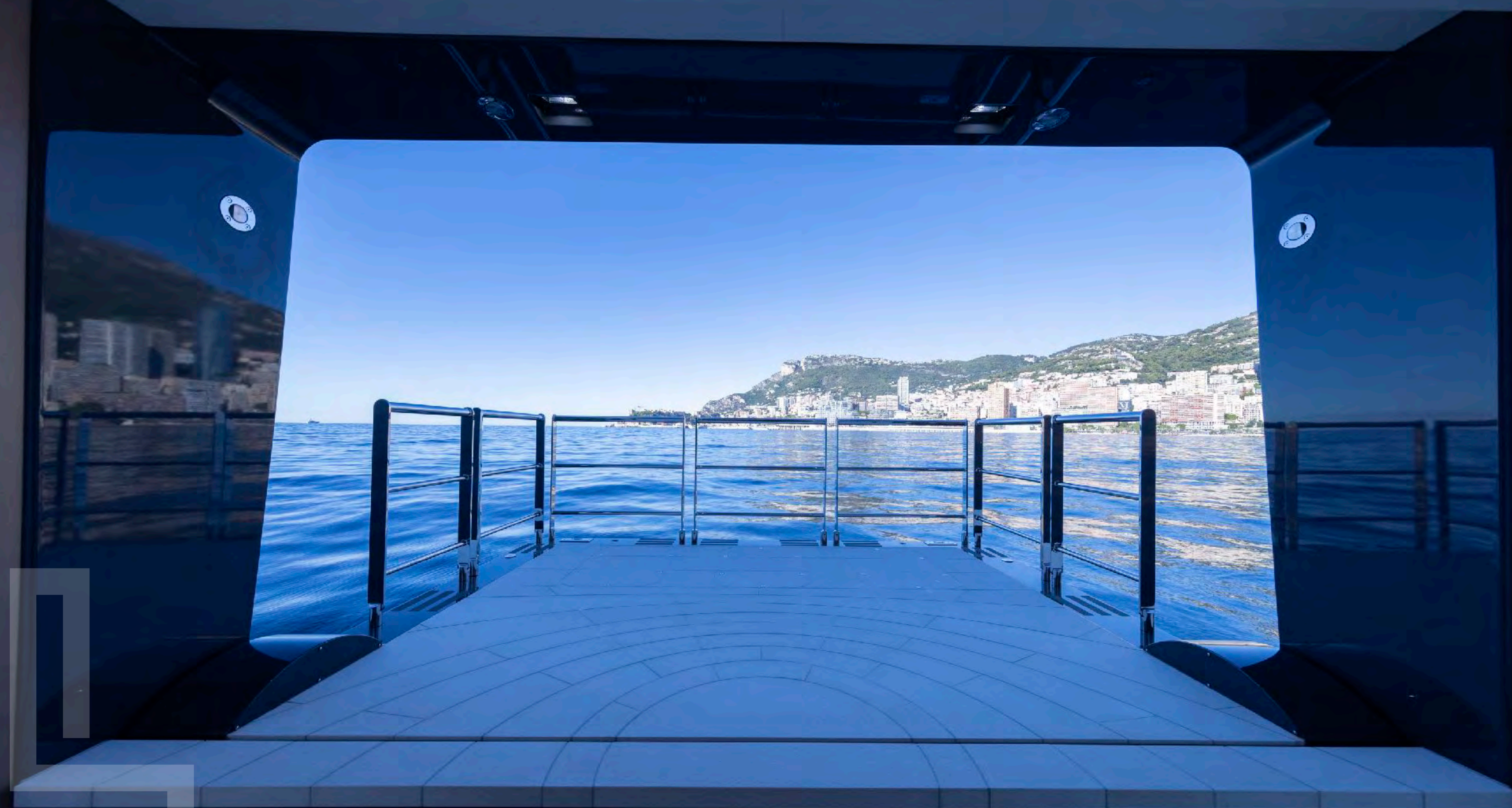
BEACH CLUB

SEA-LEVEL ENTRANCE

Enjoy a leisurely drink **right at the water's edge** or take a thrilling dive straight into the sea.













TENDER GARAGE

A dwelling for the two exceptional 10.5-meter Hodgdon tenders



TWIN-WIN TENDERS

The two exquisite 10.5-meter Hodgdon tenders epitomize unparalleled excellence.

Both the limousine and open tender showcase a **perfect blend** of **speed, stability,** and **exquisite craftsmanship.**

These tenders stand as a seamless extension of the yacht, embodying the highest standards of quality and luxurious comfort.





SPECIFICATION

CHARACTERISTICS

NAME:	DAR
BUILDER:	OCEANCO
YEAR BUILT:	2018
TYPE:	DISPLACEMENT MOTOR YACHT
HULL NO.:	Y717
IMO:	1013066
CLASSIFICATION:	LLOYD'S REGISTER
FLAG:	CAYMAN ISLANDS
NAVAL ARCHITECT:	AZURE NAVAL ARCHITECTS B.V.
EXTERIOR DESIGNER:	LUIZ DE BASTO DESIGN
INTERIOR DESIGNER:	NUVOLARI & LENARD VALENTINA ZANNIER INTERIORS (REFIT 2024)
CONSTRUCTION:	STEEL HULL ALUMINIUM SUPERSTRUCTURE TEAK DECKS
DISPLACEMENT:	2,355
HELI DECKS:	1 X FWD DECK - MAX LOAD 3.8T 1 X SUN DECK - MAX LOAD 3.0T

DIMENSIONS

LENGTH OVERALL:	90.00 M (295'3")
LENGTH WATERLINE:	77.20 M (253'3")
BEAM:	14.20 M (46'7")
MAX DRAFT:	4.05 M (13'3")
GROSS TONNAGE:	2,926
NET TONNAGE:	877





SPEED & RANGE UNDER POWER

MAXIMUM SPEED:	20 KNOTS
CRUISING SPEED:	13 KNOTS
FUEL CONSUMPTION:	APPROX. 500 LITRES / HOUR @ 13 KNOTS
RANGE:	5,500NM @ 13 KNOTS

CAPACITIES

ACCOMMODATION:	14 GUESTS IN 7 CABINS
CREW:	UP TO 31 X CREW IN 16 CABINS
FUEL:	278,000 LITRES / 73,440 US GALLONS
PETROL:	1,000 LITRES / 264 US GALLONS
FRESH WATER:	115,000 LITRES / 33,380 US GALLONS
HOLDING TANK:	14,700 LITRES / 3,883 US GALLONS
LUBE OIL:	5,000 LITRES / 1,321 US GALLONS
DIRTY OIL:	3,800 LITRES / 1,004 US GALLONS
SLUDGE:	5,900 LITRES / 1,559 US GALLONS
GREY WATER:	19,200 LITRES / 5,072 US GALLONS
BLACK WATER:	5,500 LITRES / 1,453 US GALLONS
DECK WASH:	27,000 LITRES / 7,133 US GALLONS
POOL WATER:	20,000 LITRES / 5,283 US GALLONS

ACCOMMODATION

OWNER:	1 x MASTER CABIN
GUEST:	2 x VIP CABINS 4 x DOUBLE CABINS
CREW:	1 x CAPTAIN CABIN 15 x CREW CABINS

MECHANICAL EQUIPMENT

ENGINES:	2 X 3,600KW (4,828HP) MTU 20V 4000 M73L, DIESEL
ENGINE HOURS:	4,551 (PORT) / 4,540 (STBD) AS OF SEPTEMBER 2024
GENERATORS:	3 X 498KW (668HP) MTU 12V 2000
GENERATOR HOURS:	11,500 / 11,176 / 11,251 AS OF SEPTEMBER 2024
GEARBOX:	REINTJES WAF 1963
PROPULSION:	TWIN SCREW FIX BLADE
PROPELLERS:	2 X SIP MARINE - 5 BLADES, 2500MM
RUDDER ANGLE Y:	MECHANICAL, ANALOG & DIGITAL
STEERING SYSTEM:	ROLLS ROYCE
STABILISERS:	2 X QUANTUM XT - ZERO SPEED
BOW THRUSTER:	VOITH GMBH & CO. KGA 400KW IN-LINE THRUSTER
STERN THRUSTER:	VETH 286KW FOLDABLE & AZUMITHING
ELECTRICITY:	380V / 240V / 24V
SHORE POWER:	2 X TRANSFORMERS - 230 / 400V 50HZ 579KVA
BATTERIES:	YES
CHARGERS:	SIEMENS
CONVERTERS:	SIEMENS
HYDRAULICS:	VAN DRIEL
AIR CONDITIONING:	HEINEN & HOPMANN
WATER MAKER:	HEM 8040 DUPLEX
WATER SYSTEM:	WATER SOFTENER & AG - S SILVER ION STERILIZERS
TOILET SYSTEM:	EVAC
SEWAGE SYSTEM:	HAMMAN
FUEL CENTRIFUGE:	SEPAR
FUEL SEPARATOR:	ALFA LAVAL
GARBAGE CONVERTER:	OMPECO





NAVIGATION EQUIPMENT

MAGNETIC COMPASS:	CASSENS & PLATH
GYRO COM:	2 X RAYTHEON ANSCHUTZ STD22
PASS:	RAYTHEON ANSCHUTZ
STEERING:	SAM ELECTRONICS NACOS PLATINUM
AUTOMATIC PILOT ECHO:	ELAC LAZ5100
SOUNDER:	FARSOUNDER 500
SONAR:	SAM ELECTRONICS NACOS PLATINUM
RADAR:	SAM ELECTRONICS NACOS PLATINUM
DP:	SAAB R5
AIS:	3 X SAAB R5
DGPS:	SAAB R5
GPS:	SAM ELECTRONICS NACOS PLATINUM
CHART PLOTTER:	SAM 2918
NAVTEX:	SAM 4900
LOG:	OBSERVATOR
WIND & WEATHER:	2 X SENSIN
SEARCHLIGHTS:	PANASONIC
CAMERA(S):	NIGHT VISION CAMERA – VECTOR VISION
MISCELLANEOUS:	HORN - KAHLENBERG

COMMUNICATION EQUIPMENT

SATCOM:	SAILOR FBB500, FBB150
VHF:	SAILOR 6215, 6222, 2 X 6248
SSB:	SAILOR 6301
INMARSAT C:	2 X SAILOR 6110
IRIDIUM:	2 X SC4000
TELEPHONE EXCHANGE:	AVAYA
INTERCOM:	PA
VSAT:	2 X SEA TEL 5012
INTERNET:	2 X STARLINK MARITIME
GSM 4G/5G:	PEPWAVE

DECK EQUIPMENT

ANCHOR WINDLASSES:	2 X STEEN & CO GMBH
AFT WARPING CAPSTANS:	2 X STEEN & CO GMBH
ANCHORS:	2 X HHP PULL N TYPE - 1,080KG EACH
ANCHOR CHAINS:	2 X 220M - 36MM Ø
BOAT CRANE & DAVITS:	CRAMM
PASSERELLE:	STAALART
SIDE BOARDING LADDER:	HYDROMAR
SIDE BOARDING GANGWAY:	HYDROMAR
POOL / JACUZZI:	YES NEW WIND-PROTECTION GLASS ADDED - UPPER DECK POOL AREA (2021)
SWIMMING PLATFORM:	YES
GUEST ELEVATOR:	YES
AWNINGS:	AMBER
COVERS:	YES

ENTERTAINMENT EQUIPMENT

TV ANTENNA:	2 X SEA TEL 6004
GENERAL:	MEDITERRANEAN: SKY UK, SKY ITALY CARIBBEAN: I DIRECT TV LATIN AMERICA DISH AIRPLAY, APPLE TV, NETFLIX, AMAZON PRIME, DISNEY, PARAMOUNT, SPOTIFY X-BOX OCULUS YACHT EYE THROUGHOUT THE VESSEL ALL DEVICES INCLUDING LIGHT AND TEMPERATURE ARE I-PAD CONTROLLED BACKGAMMON, CHESS, CARDS, MONOPOLY





GALLEY & LAUNDRY EQUIPMENT

GALLEY:

BIJVANCK CENTRAL COOKING ISLAND INCLUDING:
INDUCTION PLATES, FOOD HEAT LAMP, GRIDDLE PLATE,
SALAMANDER, WARMING OVEN, FRYER, COLD TAP, ETC
RATIONAL OVEN
EFFEUNO PIZZA OVEN
FOSTER FREEZER
SIRMAN BLAST FREEZER
GRAM FRIDGE
HOBART DISHWASHER
ZIP HYDROTAP
PANASONIC MICROWAVE
VARIOUS ACCESORIES

PANTRY:

MAIN DECK, UPPER DECK & OWNER'S DECK
FRIDGES, ICE MAKERS, ZIP HYDROTAPS, MICROWAVES, WINE
COOLER FRIDGES, ETC)

LAUNDRY:

5 X MIELE PROFESSIONAL WASHING MACHINES
5 X MIELE PROFESSIONAL DRYERS
GHIDINI STEAM IRON
MIELE ROTARY IRON

SECURITY & SAFETY EQUIPMENT

SAFETY:

EPIRB SAILOR SE406-11
2 X SART SAILOR 11 9GHZ

SECURITY:

KABA CENTRAL ANTI-INTRUSION SYSTEM
2 X ANTI-PIRACY WATER CANNONS

FIRE FIGHTING:

MONITORING & ALARM SYSTEM CONSILLIUM
HI FOG SYSTEM MARIOFF

TENDERS & WATER-SPORTS EQUIPMENT

INFLATABLES:

1 x SAIL BOAT - TIWAL INFLATABLE
1 x 10 X 6.6M INFLATABLE POOL - FREESTYLE
1 x ZORB (SPHERE FOR A PERSON TO STEP INTO AND ROLL ON THE WATER)
1 x 1 PERSON SUP - RED PADDLE
1 x 3 PERSON SUP - RED PADDLE

TOWABLES:

1 x WINDSURF - FANATIC
1 x KITESURF - CABIRINHA
1 x WATERSKI - JOBE
1 x KNEEBOARD - JOBE
1 x WAKEBOARD - JOBE
TOWABLES JOBE (BANANA, DONUT, BINAR, SONAR)

ACCESSORIES:

1 x 15M SLIDE - FREESTYLE
1 x LIQUID FORCE MAGIC CARPET 6' X 18'
LIFE VESTS AND HELMETS - LIQUID FORCE

GYM & WELLNESS

GYM:

1 x SKILLRUN TECHNOGYM
1 x BIKE TECHNOGYM
1 x EXCITE SYNCHRO
TECHNOGYM WEIGHTS
YOGA MATS

WELLNESS:

HAMMAM
SAUNA
MASSAGE / BEAUTY SALON





TENDERS & WATER-SPORTS EQUIPMENT

TENDERS:

1 x 10.50M HODGDON YACHTS CUSTOM OPEN
1 x 10.50M HODGDON YACHTS CUSTOM LIMO
1 x 6.20M COBRA PATRONUS CREW TENDER

TOYS:

1 x WAVE RUNNER SEADOO GTR STD 230 (2021)
1 x JETSURF ULTRA SPORT
1 x FLITEBOARD
1 x AIRDRONE - DJI INSPIRE 2
1 x UNDERWATER DRONE - IBUBBLE
2 x WAVE RUNNER SEADOO GTX LTD 300 (2021)
2 x JETSKI YAMAHA SUPER JET
2 x 1 PERSON PRIJON KAYAK
4 x 2 PERSON BIWOK KAYAK
4 x SEABOB KAYAGO F5 SR
5 x GOCYCLE BICYCLE

DIVING EQUIPMENT:

BCD: SCUBA PRO
TANKS: LUXFER - 11LT AND 9LT
WET SUITS: SCUBA PRO - 3MM AND 5MM
FINS: MARES
MASKS: ATOMIC AQUATICS, OCEAN REEF
BOOTS: SCUBA PRO
WEIGHTS: SCUBA
PRO COMPUTER: SUUNTO
CAMERAS: GO PRO
ASSORTMENT OF SNORKELLING GEAR: CRESSI, OCEAN REEF



**LARGE
YACHT
CORP.**

FOR INQUIRIES & MORE INFORMATION

VESA KAUKONEN

vesa@largeyachtcorp.com

+33 643 915 414

OFFICES

25 Boulevard Albert 1er,
98000 Monaco

Douglas Chambers,
North Quay Douglas,
IM1 4LA Isle of Man

www.largeyachtcorp.com