

FOR SALE

# NANSEN EXPLORER



OY LAIVATEOLLISUUS | 71.6 M (234,11 FT) | 1983/2022

# NANSEN EXPLORER

Following a **complete 2022 refit**, including **interior rebuilt** from the ground up where all guest and common areas were completely reconstructed, hull bottom repaint, new sewage treatment system and more!

**Nansen Explorer** stands out with her **commercially certified helipad**, capable of handling up to 4.8 tons, the addition of a stern thruster, and a much-expanded lounge area. This spacious lounge now features a guest bar, larger windows, and high ceilings, offering a **refined** and **comfortable atmosphere**.

Accommodating **up to 12 guests** in seven double cabins, along with 17 crew cabins and one medic's cabin, her Scandinavian-inspired living areas exude **tranquility** and style, creating a luxurious space for relaxation between adventures. Built for **functionality**, **Nansen Explorer** excels with the capability to launch her Zodiacs quickly, conduct fast heli-ops from her expansive helideck, and provide all necessary equipment from her adventure hangar.

Operated by seasoned expedition yacht specialists, and named after Norway's renowned explorer, Nansen Explorer offers a **truly unique experience**.

**ASKING PRICE**

€ 9,900,000 (EX VAT)



# KEY FEATURES

ICE  
CLASS 1A  
HULL

COMMERCIALY  
CERTIFIED  
HELIDECK

HUGE  
STORAGE  
CAPACITY

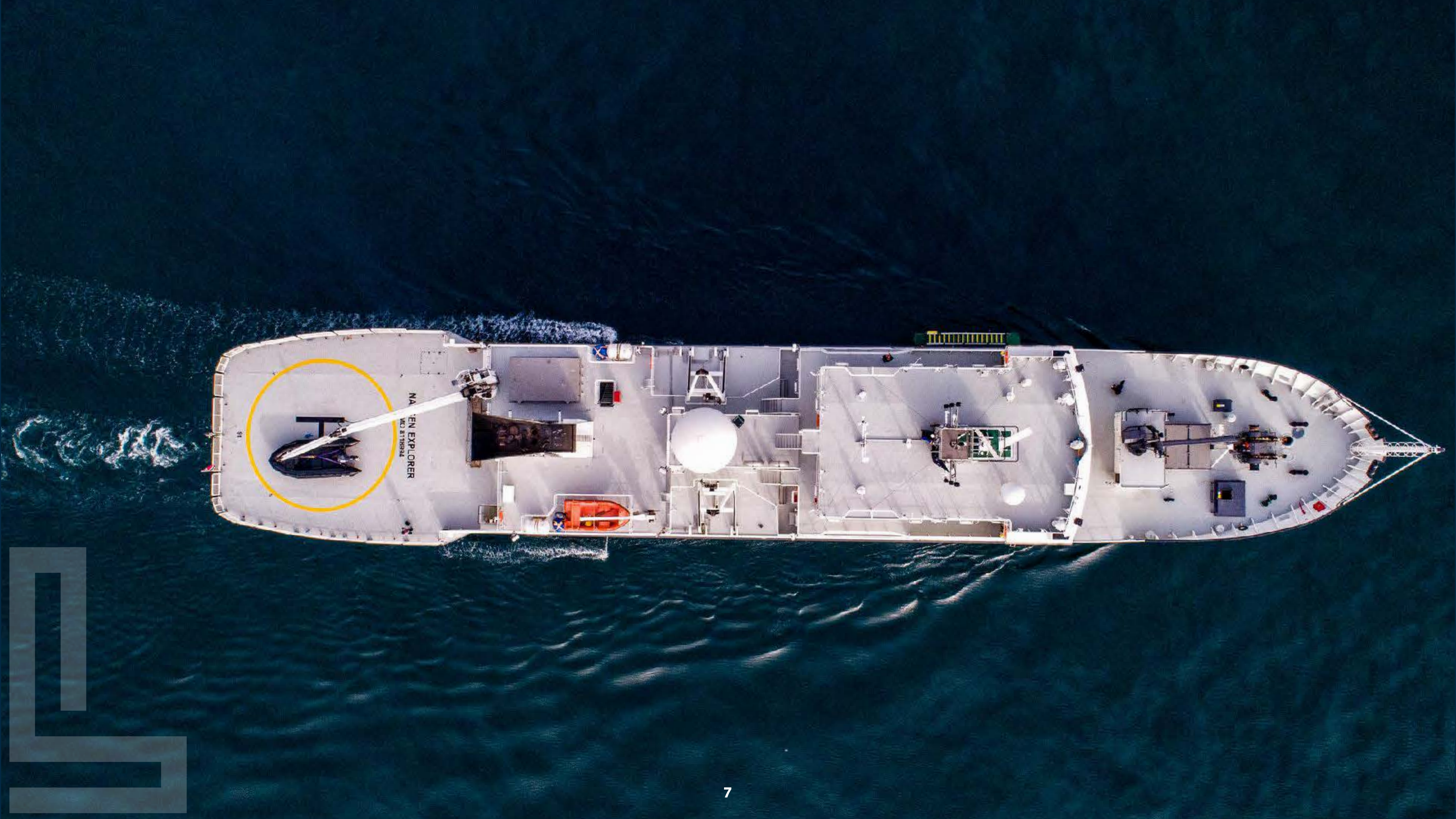
UNRESTRICTED  
POLAR  
CRUISING



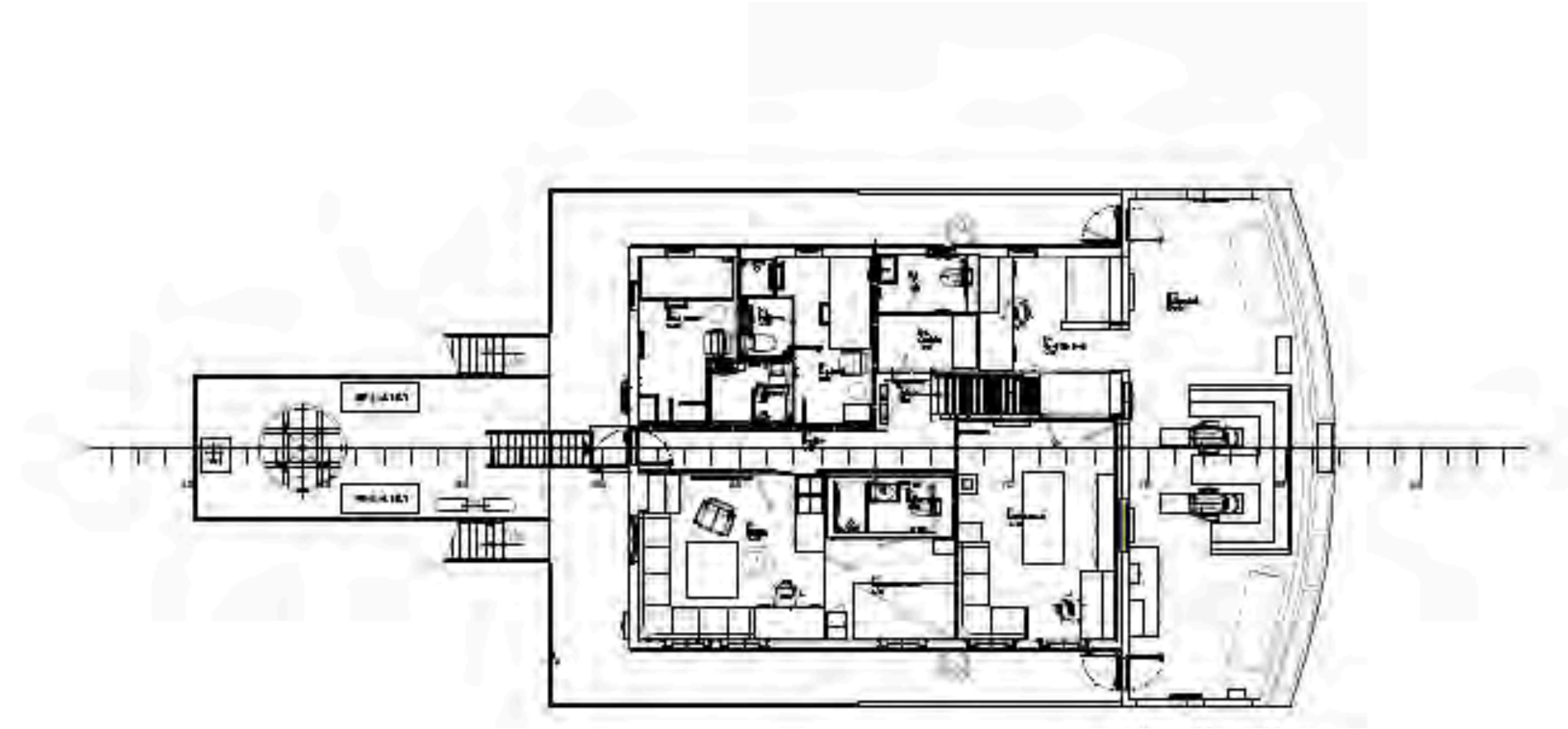
**Nansen Explorer** is perfectly suited for remote destinations like Antarctica or Svalbard, enabling **the most exceptional adventures**. Whether serving as a highly-equipped support vessel, capable of carrying large fuel reserves for helicopter refueling or as a mothership, or operating as an independent expedition vessel, she **offers unparalleled versatility**.



***NANSEN EXPLORER*** OFFERS  
THE ULTIMATE IN EXPLORATION



# BRIDGE DECK



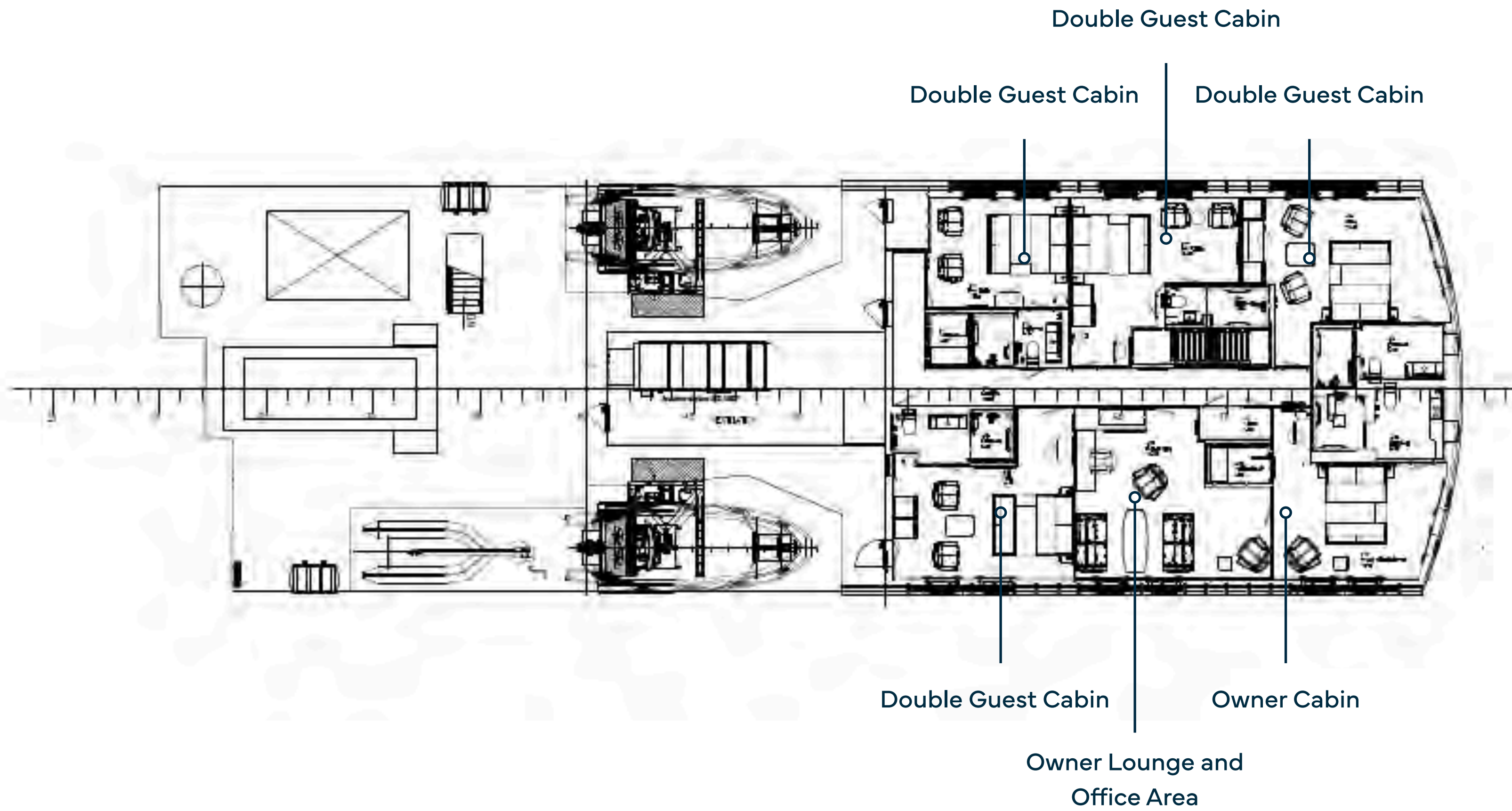








# BOAT DECK









# OWNER CABIN

The owner's cabin features a private lounge and office area, while **all guest cabins are ensuite**, offering generously sized bathrooms. As part of the **2022 refit**, the windows were expanded, providing guests with **breathtaking views from the comfort of their cabins.**





BOAT DECK

OWNER CABIN



**BOAT DECK**

**OWNER CABIN**





**BOAT DECK**

**OWNER CABIN**





**BOAT DECK**

**OWNER CABIN**



**BOAT DECK  
OWNER LOUNGE AND  
OFFICE AREA**



**BOAT DECK  
OWNER LOUNGE AND  
OFFICE AREA**



**BOAT DECK  
OWNER LOUNGE AND  
OFFICE AREA**





**BOAT DECK**

**OWNER BATHROOM**





**BOAT DECK**

**OWNER BATHROOM**





**BOAT DECK  
GUEST CABIN**



**BOAT DECK**

**GUEST BATHROOM**



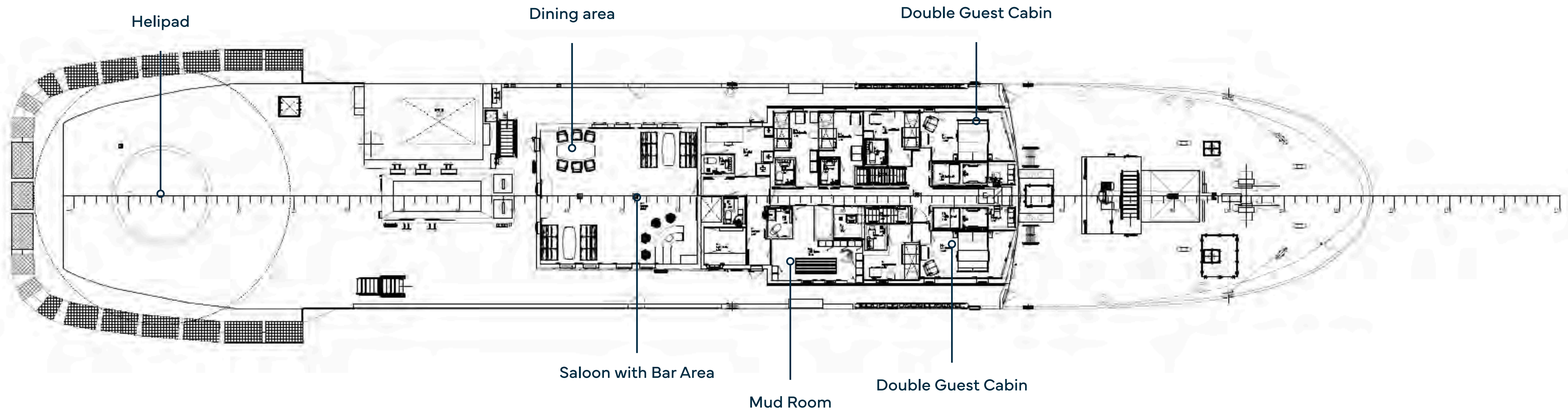
**BOAT DECK**

**GUEST CABIN**



**BOAT DECK  
GUEST CABIN**

# PASSENGER DECK







# HELIPAD

Currently certified for **commercial operations** under Norwegian class and flag, with a maximum capacity of **4.8 tons**.

The helideck supports a **D-value of 13 meters** or less, accommodating aircraft such as the AS350 or equivalent. Designed for a take-off weight of **up to 16 tons**, it can operate under different registration conditions and is capable of supporting AS332 Super Puma operations.

The helideck is certified in accordance with the **Offshore Cap437 standard**.





HELIPAD



HELIPAD



**PASSENGER DECK**  
**DINING AREA**



**PASSENGER DECK  
DINING AREA**



**PASSENGER DECK**

**SALON**



**PASSENGER DECK**  
**SALON**



PASSENGER DECK

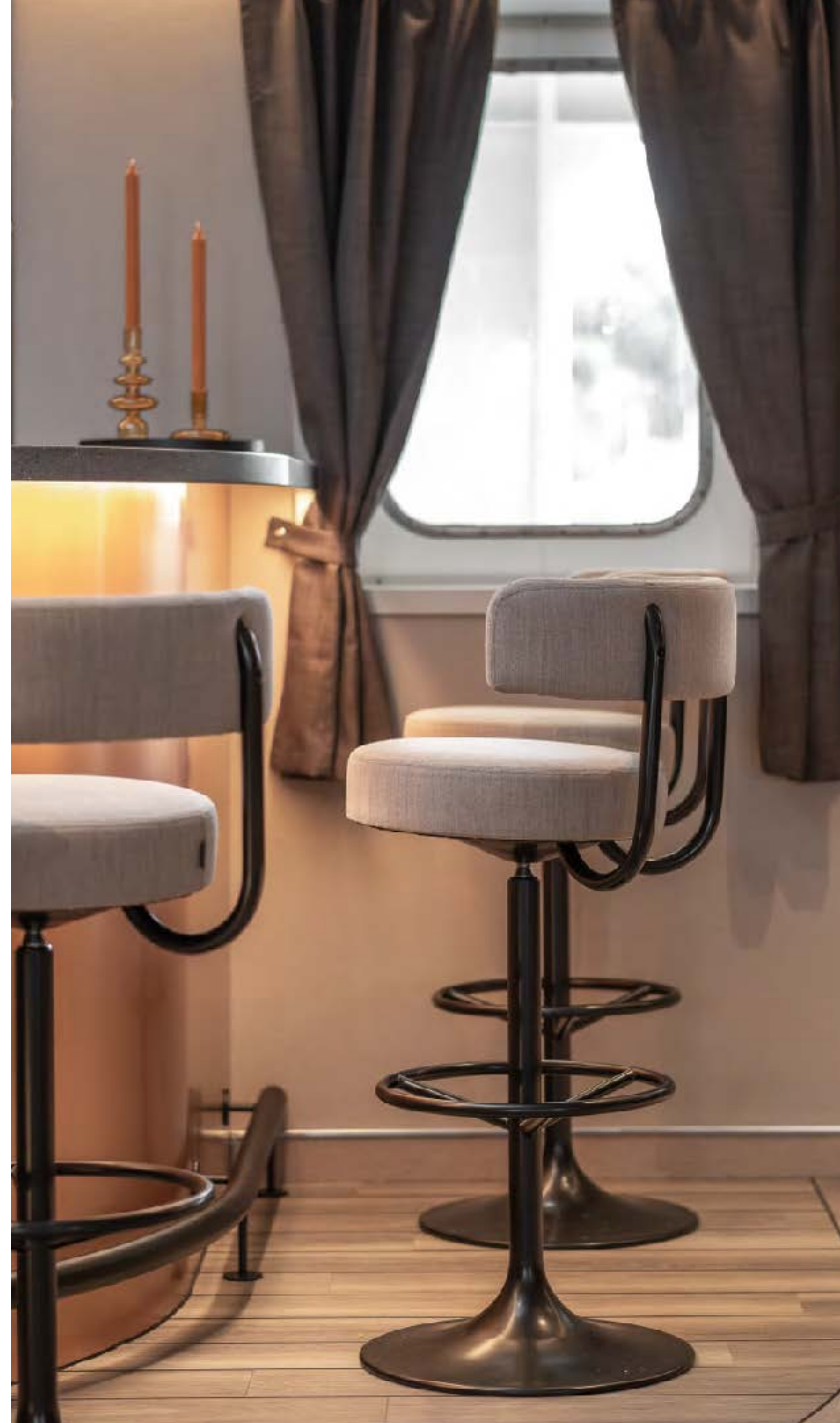
SALON



**PASSENGER DECK**

**BAR AREA**







PASSENGER DECK  
SALON



PASSENGER DECK

SALON

# MUD ROOM

The **thoughtfully designed layout** features a mudroom, allowing guests to conveniently store their specialized equipment or outerwear after excursions, before stepping into the warmth of the interior.

312A BATH

PASSENGER DECK  
GUEST CABIN





**PASSENGER DECK**  
**GUEST CABIN**



**PASSENGER DECK**  
**GUEST CABIN**



PASSENGER DECK

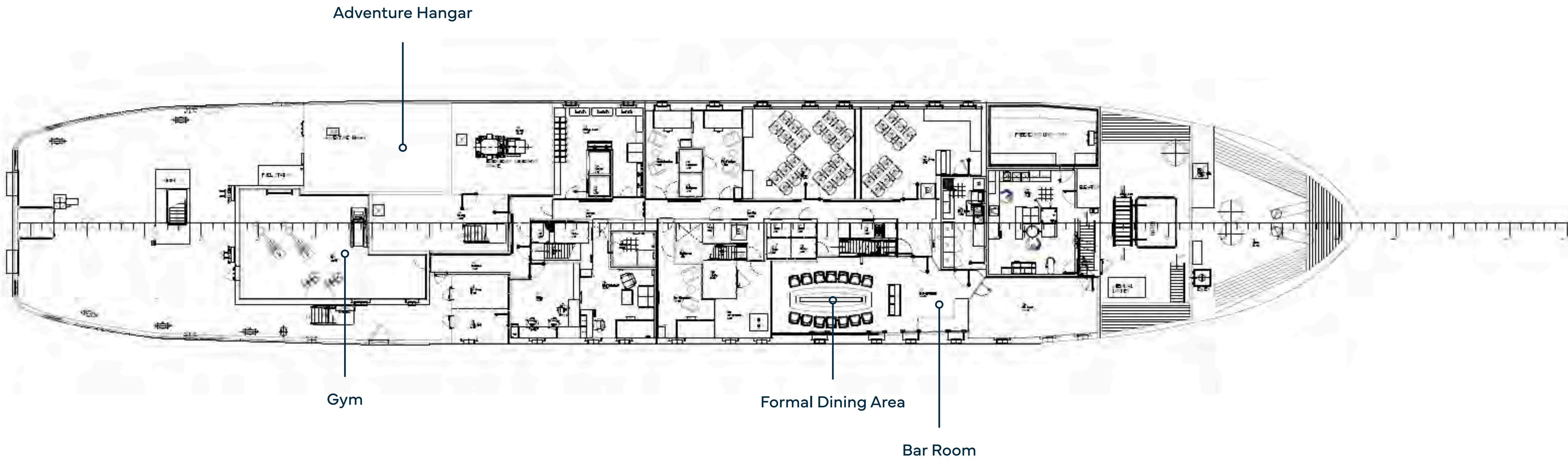
**GUEST BATHROOM**





**PASSENGER DECK**  
**GUEST CABIN**

# MAIN DECK





**MAIN DECK  
GYM**



MAIN DECK

GYM



MAIN DECK

FORMAL DINING AREA



MAIN DECK

FORMAL DINING AREA



MAIN DECK

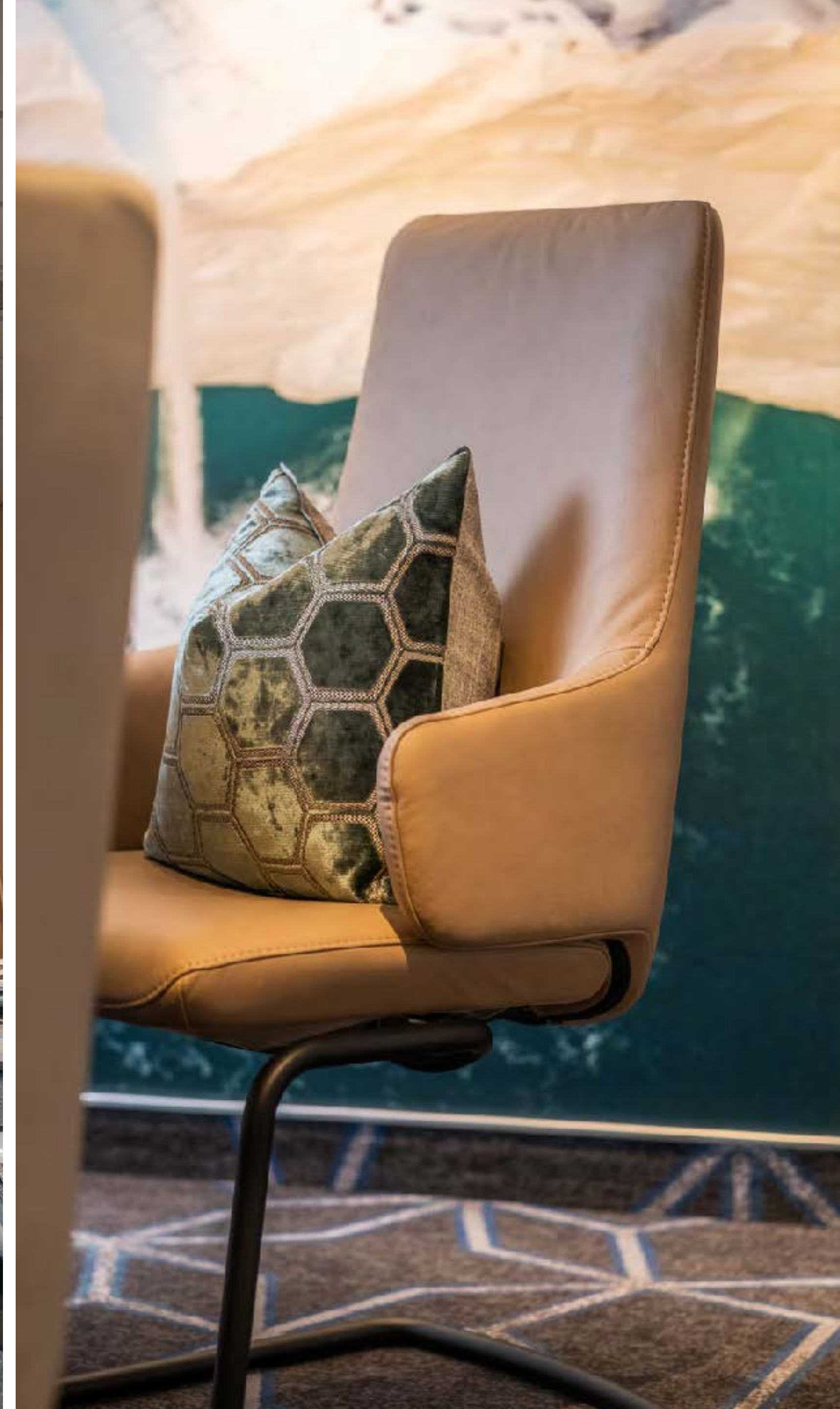
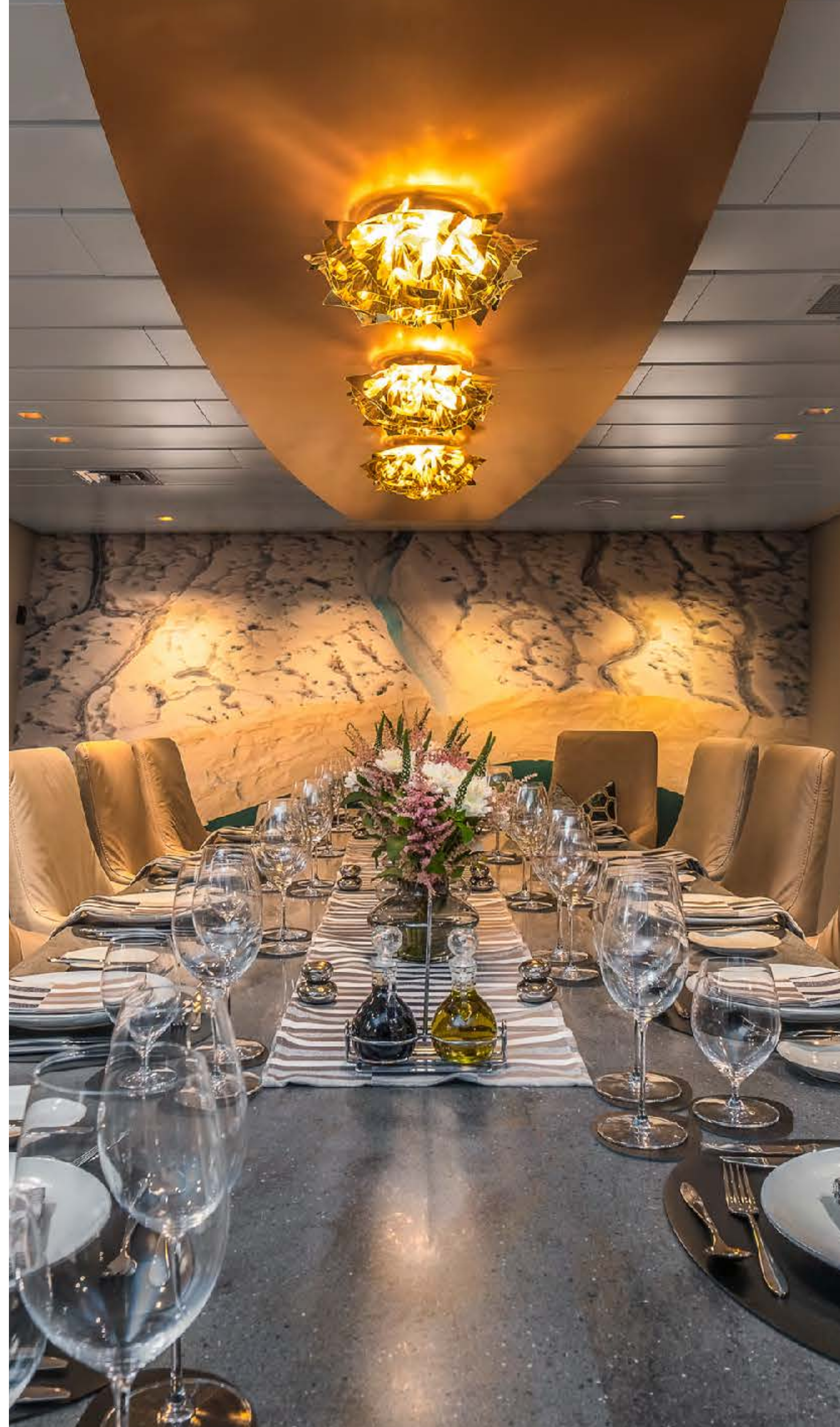
FORMAL DINING AREA





MAIN DECK

FORMAL DINING AREA





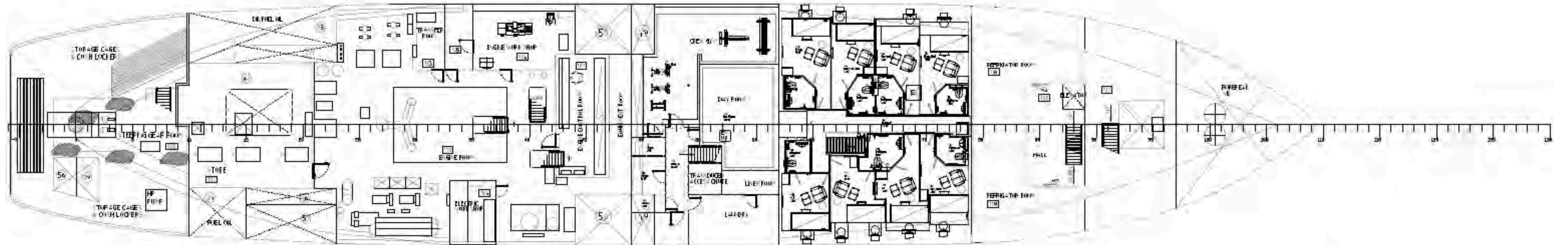


**MAIN DECK  
BAR ROOM**

**MAIN DECK  
BAR ROOM**



# LOWER DECK



# SPECIFICATION



---

## CHARACTERISTICS

<b>NAME:</b>	NANSEN EXPLORER
<b>BUILDER:</b>	OY LAIVATEOLLISUUS
<b>YEAR BUILT / REFIT:</b>	1983 / 2021 / 2022
<b>TYPE:</b>	EXPEDITION YACHT
<b>CLASSIFICATION:</b>	B.V. SPECIAL SERVICE - EXPEDITION VESSEL
<b>FLAG:</b>	NORWAY
<b>NAVAL ARCHITECT:</b>	AZURE NAVAL ARCHITECTS B.V.
<b>EXTERIOR DESIGNER:</b>	OY LAIVATEOLLISUUS
<b>INTERIOR DESIGNER:</b>	NMI AND ÅSHILD LANDEVAAG LANDZ ARCHITECTS (REFIT 2021)
<b>CONSTRUCTION:</b>	STEEL. B.V. ICE CLASS 1A HULL STEEL AND ALUMINIUM SUPERSTRUCTURE
<b>DISPLACEMENT:</b>	2,143
<b>HELI DECKS:</b>	OFFSHORE CAP437 STANDARD MAX LOAD 4.8T (AS350 OR EQUIVALENT)

---

## DIMENSIONS

<b>LENGTH OVERALL:</b>	71.61 M (234'11")
<b>BEAM:</b>	12.82 M (42'1")
<b>MAX DRAFT:</b>	5 M (16'4")
<b>GROSS TONNAGE:</b>	1,859





## SPEED & RANGE UNDER POWER

---

<b>MAXIMUM SPEED:</b>	12 KNOTS
<b>CRUISING SPEED:</b>	10 KNOTS
<b>RANGE:</b>	12,000NM @ 10 KNOTS

## CAPACITIES

---

<b>ACCOMMODATION:</b>	12
<b>CREW:</b>	MAX 22, INCLUDING FIELD STAFF AND SUPERNUMERARY
<b>FUEL:</b>	390,440 LITRES (103,143 US GALLONS) MARINE DIESEL 19,500 LITRES (5,151 US GALLONS) JET-A1
<b>WATER:</b>	148,000 LITRES (39,097 US GALLONS)
<b>LUBE OIL:</b>	17,500 LITRES (4,623 US GALLONS)
<b>DIRTY OIL:</b>	7,473 LITRES (1,974 US GALLONS)
<b>GREY WATER:</b>	9,600 LITRES (2,536 US GALLONS)
<b>BLACK WATER:</b>	9,600 LITRES (2,536 US GALLONS)

## ACCOMMODATION

---

<b>OWNER:</b>	1 x MASTER CABIN
<b>GUEST:</b>	6 x DOUBLE CABINS
<b>CREW:</b>	13 x SINGLE CABINS 4 x DOUBLE CABINS 1 x HOSPITAL/MEDICS CABIN

## MECHANICAL EQUIPMENT

<b>ENGINES:</b>	2 X GORKIJ/RUMO G-74, 1163KW EACH
<b>ENGINE HOURS:</b>	5,150 (PORT) / 5,191 (STBD) AS OF MARCH 2024
<b>GENERATORS:</b>	3 X SCANIA DI9-50, 223KVA EACH, 380V 50HZ
<b>GENERATOR HOURS:</b>	7,261 / 7,487/ 7,357 AS OF MARCH 2024
<b>GEARBOX:</b>	LOHMAN+STOLTERFOHT
<b>PROPULSION:</b>	KAMEWA CPP
<b>PROPELLERS:</b>	1 X 4 BLADED LEFT-HANDED CPP
<b>RUDDER ANGLE:</b>	MAX 40°
<b>STEERING SYSTEM:</b>	WÄRTSILÄ
<b>STABILISERS:</b>	INTERING ACTIVE STABILIZER TANK SYSTEM, WITH TWO SETS OF TANKS
<b>THRUSTER:</b>	JASTRAM BU20F 160KW, BOW AND STERN THRUSTERS
<b>ELECTRICITY:</b>	50HZ, 380V & 230V
<b>SHORE POWER: :</b>	380V, 125A
<b>CHARGERS:</b>	VICTRON
<b>CONVERTERS:</b>	3 X TRANSFORMERS
<b>WATER MAKER:</b>	CATHELCO R.O PLANT. APP 7M <sup>3</sup> /DAY @ 15°C SW
<b>WATER SYSTEM:</b>	HYDROPHORE PRESSURE TANK
<b>TOILET SYSTEM:</b>	JETS, VACUUM
<b>SEWAGE SYSTEM:</b>	JETS BIO TANK
<b>FUEL SEPARATOR:</b>	ALFA LAVAL MIB 503 AND CJC FILTERS





## NAVIGATION EQUIPMENT

---

<b>MAGNETIC COMPASS:</b>	YES
<b>GYRO COMPASS:</b>	KEIKI TG-8000
<b>AUTOMATIC PILOT:</b>	SIMRAD AP 70 MK2
<b>ECHO SOUNDER:</b>	FURUNO FE-700
<b>RADAR:</b>	FURUNO X-BAND FURUNO S-BAND
<b>AIS:</b>	FURUNO FA 150
<b>GPS:</b>	FURUNO GP 170
<b>CHART PLOTTER:</b>	FURUNO ECDIS 2X
<b>NAVTEX:</b>	FURUNO NX-700
<b>SEARCHLIGHTS:</b>	2 X SEARCHLIGHT MANUAL, 1 X ICE LIGHT MANUAL

## COMMUNICATION EQUIPMENT

---

<b>SATCOM:</b>	SAT-C JUE 87 SAILOR V-SAT 1X SMALL DOME 1X BIG DOME 2 X STARLINK 2 X IRIDIUM FIXED
<b>VHF:</b>	2 X SAILOR 6222
<b>SSB:</b>	SAILOR 6301 JRC NCM 2150 JRC DATA NDZ 227
<b>INTERCOM:</b>	PHONETECH ICS 6200 R



## DECK EQUIPMENT

<b>CRANES:</b>	FORWARD CRANE, REACH IS 1.6 T AT 8.5 M AFT CRANE, REACH IS 2.6 T AT 12.5 M MAKE: HYDROPLAN OF VAASA TYPE: SAPMNA 5,4 (HSR 85100)
<b>ANCHOR WINDLASSES:</b>	1 X ELECTRIC
<b>AFT WARPING CAPSTANS:</b>	1 X ELECTRIC
<b>ANCHORS:</b>	1.2 TONS, 1 SPARE ANCHOR
<b>ANCHOR CHAINS:</b>	44 MM 7 SHACKLES PS-SB
<b>BOAT CRANE &amp; DAVITS:</b>	2 X TENDER DAVITS (PORT AND STARBOARD) TYPE: VESTDAVIT PL-2500 MAX LOAD (SWL): 2500 KG WINCH: VESTVINSJ C-244-2 SPEED: 36 M/MIN PRESSURE: 200 BAR HYD. PLANT: BEVI 25 KW
<b>SIDE BOARDING GANGWAY:</b>	2 X ELECTRIC

## SECURITY & SAFETY EQUIPMENT

<b>SAFETY:</b>	SOLAS AND POLAR CODE COMPLIANT FOR 35 PERSONS (FULL INVENTORY UPON REQUEST)
<b>FIREFIGHTING:</b>	SOLAS COMPLIANT (FULL INVENTORY UPON REQUEST)
<b>SECURITY:</b>	ISPS COMPLIANT



### Disclaimer

This document is not contractual. All specifications are given in good faith and offered for informational purposes only. The publisher and company do not warrant or assume any legal liability or responsibility for the accuracy, completeness, or usefulness of any information and/or images displayed. Yacht inventory, specifications and prices are subject to change without prior notice. None of the text and/or images used in this brochure may be reproduced without written consent from the publisher.



## **GALLEY & LAUNDRY EQUIPMENT**

---

**X1 STEAMER RATIONAL I-COMBI CLASSIC**

**X1 STOVE BEHA-HEDO M2.61.DD**

**X1 MIXER KENWOOD MAJOR PREMIER**

**X1 THERMOMIX VORWREK TM6-1**

**X2 BARBECUE WEBER**

**X6 WASHING MACHINES**

**X7 DRYING MACHINES**

**FULL GALLEY INVENTORY UPON REQUEST**

## **ENTERTAINMENT EQUIPMENT**

---

**BAZEPOR SYSTEM**

**ALL CABINS HAVE WALL-MOUNTED TV, APPLE TV IN MAIN LOUNGE**

## **TENDERS & WATER-SPORTS EQUIPMENT**

---

**TENDER:**

3 X MK5 MIL SPEC ZODIAC WITH 60HP  
YAMAHA OUTBOARD

**DIVING:**

BAUER DIVE/BREATHING AIR COMPRESSOR  
PE250. 14 STEEL DIVE TANKS -300BAR

**SEA KAYAKS:**

8 HAVSPADDELN KAYAKS, 6 DOUBLE AND 2  
SINGLE. 20 DRYSUITS WITH SEPARATE BOOTS.  
SPRAY SKIRTS AND PADDLES

**SUPS:**

6

# NANSEN EXPLORER

