

FOR SALE

NAUTA

BAGLIETTO | 33 M (108 FT) | 2001/2017

NAUTA

NAUTA is a **pristine** modern vessel, expertly crafted in the iconic Baglietto vintage design, blending timeless elegance with contemporary luxury.

Offering the best of both worlds, she is **highly sought after**.

Fully compliant with **commercial standards**, equipped with **zero-speed stabilizers**, and exuding true magnificence, she stands as **an exceptional find**.

ASKING PRICE

€ 1,500,000 (EX VAT)



KEY FEATURES

MTU SERVICE
COMPLETED

FULLY
COMMERCIAL

RECENTLY
REFITTED



KEY FEATURES

28.5 KNOTS
TOP SPEED

5 SPACIOUS
STATEROOMS

RARE BAGLIETTO
MODERN YACHT

Constructed with an aluminum hull and superstructure, she **excels** in both speed and efficiency, thanks to her planing hull design.

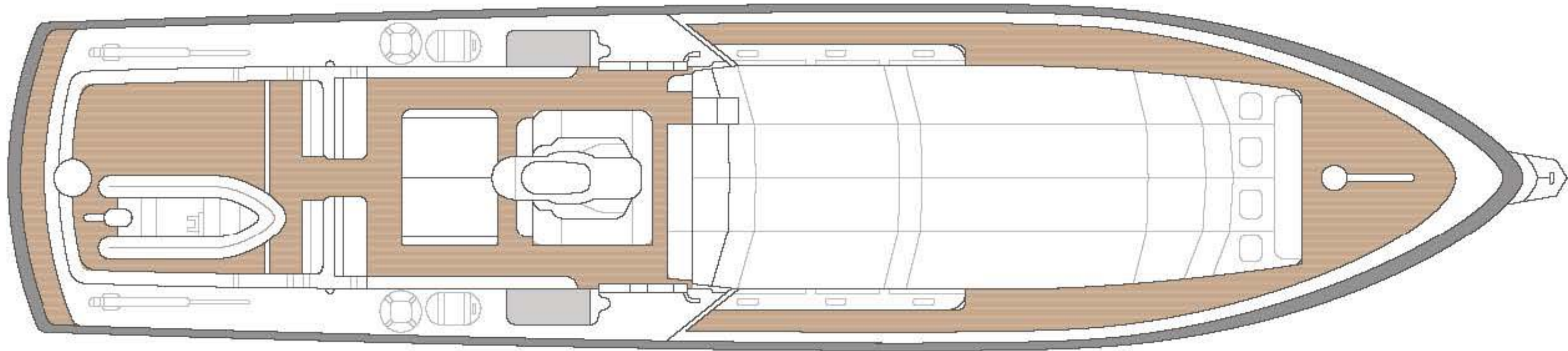
Powered by twin MTU 12V4000 M90 engines, **NAUTA** cruises **effortlessly at 20 knots** and reaches **a top speed of 28.5 knots**. With an impressive range of up to 800 nautical miles at a cruising speed of 20 knots, coupled with a fuel capacity of 30,000 liters, her **performance is exceptional**.

The yacht is also **equipped with Zero-speed CMC stabilizers**, ensuring **supreme comfort** no matter where she is anchored or underway.



NAUTA LOOKS LIKE
NO OTHER YACHT.

SUN DECK





SUN DECK

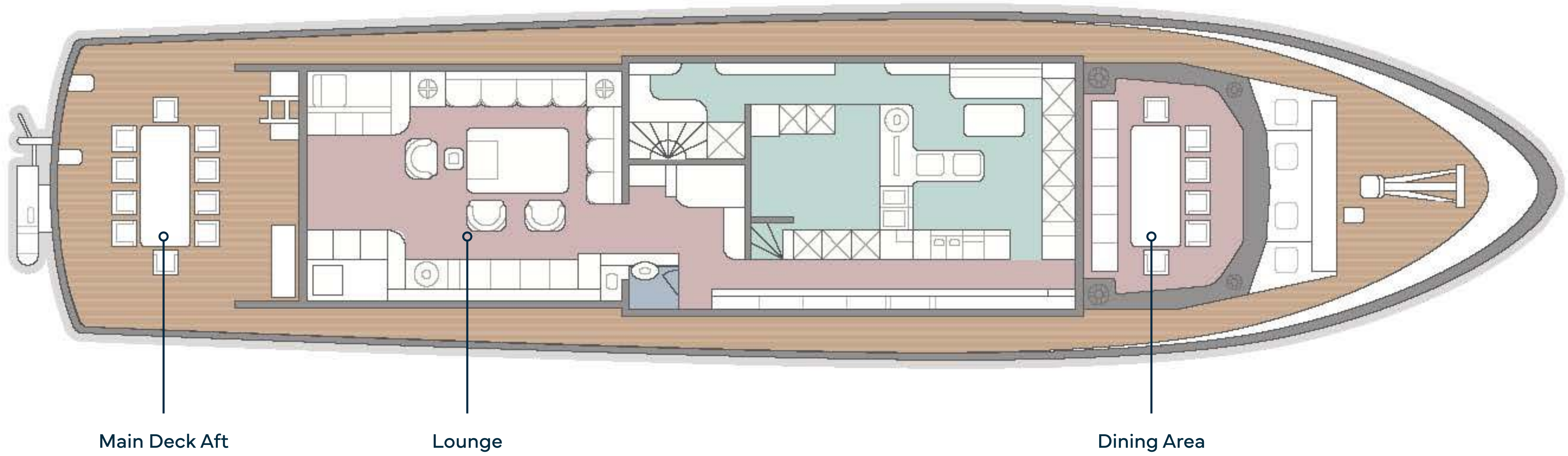


SUN DECK



SUN DECK

MAIN DECK





MAIN DECK

AFT

MAIN DECK AFT

Aboard, guests can immerse themselves in a collection of **thoughtfully designed spaces**, each crafted to offer the perfect balance of socializing and relaxation.





**MAIN DECK
LOUNGE**



**MAIN DECK
LOUNGE**



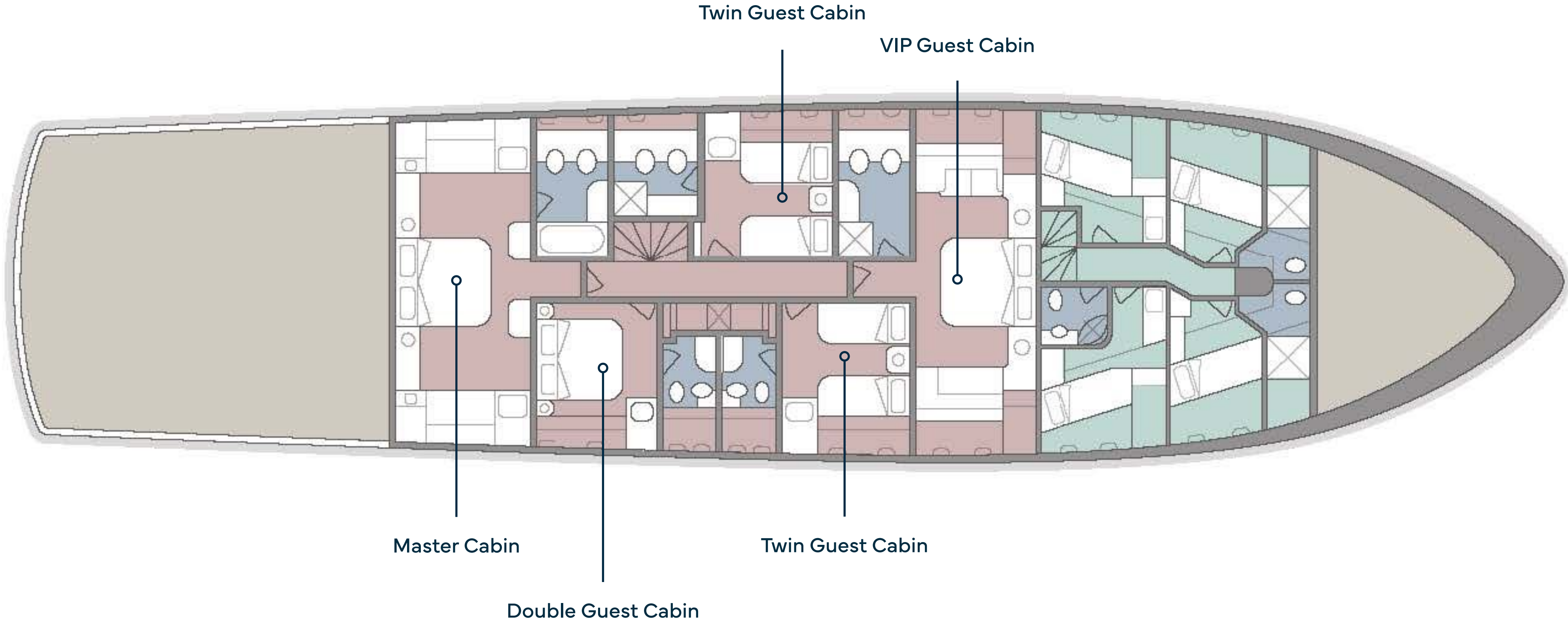
**MAIN DECK
LOUNGE**





**MAIN DECK
DINING AREA**

LOWER DECK



MASTER CABIN

Accommodating **up to 10 guests**, **NAUTA** features five elegantly designed cabins, including a **spacious full-beam master suite**, a luxurious **full-width VIP cabin**, one double cabin, and two twin guest cabins. Each cabin is meticulously crafted with an **emphasis on comfort and style**, ensuring a truly indulgent experience for every guest.





LOWER DECK

MASTER CABIN



**LOWER DECK
BATHROOM**



LOWER DECK

TWIN GUEST CABIN



LOWER DECK

TWIN GUEST CABIN



LOWER DECK
VIP GUEST CABIN

An aerial photograph of a large body of water, likely a bay or harbor, with a city visible in the background. The water is a deep blue, and the city is a mix of green and brown. A thin vertical line is positioned above the text. In the bottom left corner, the masts of several boats are visible.

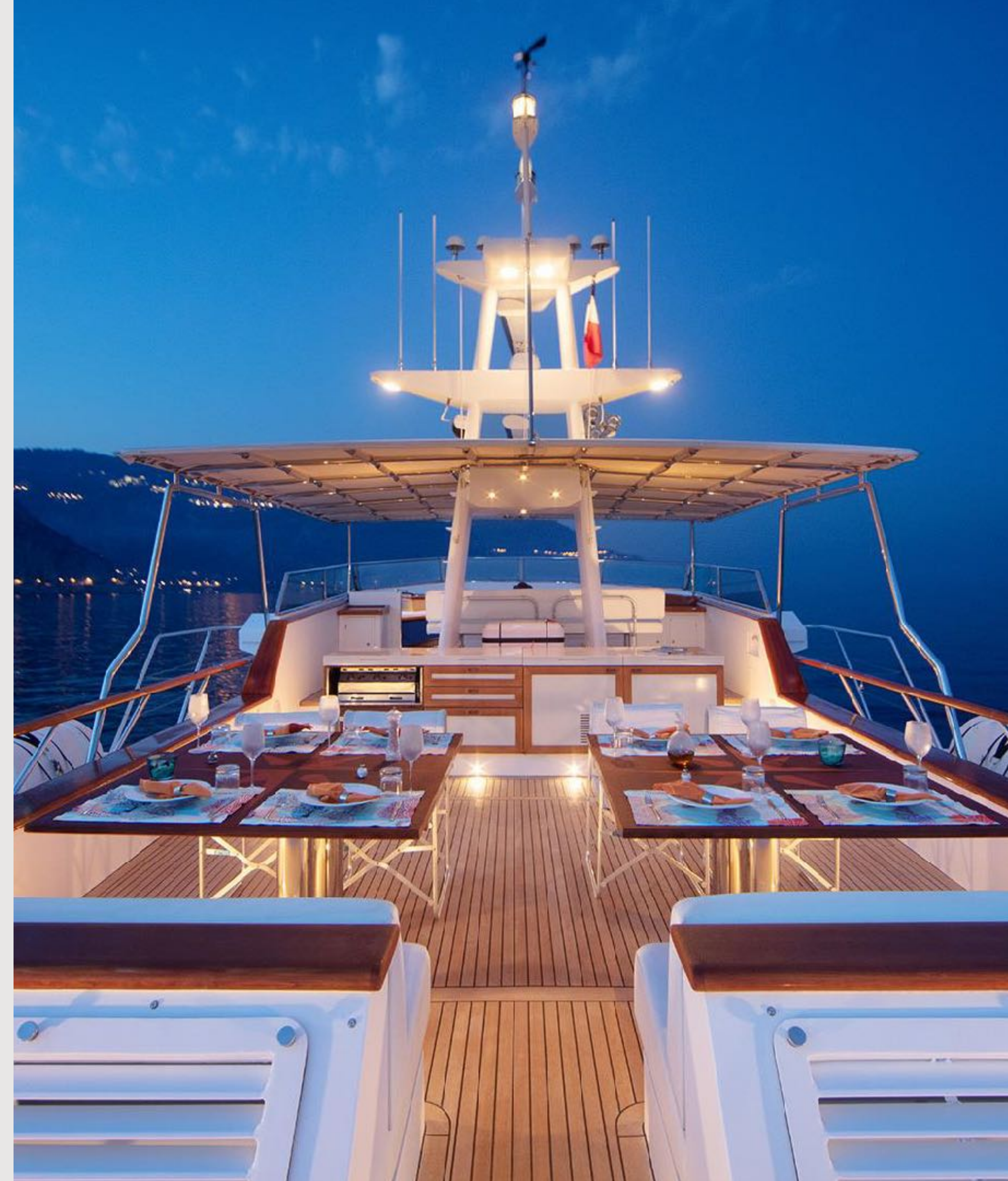
SPECIFICATION

CHARACTERISTICS

NAME:	NAUTA
BUILDER:	BAGLIETTO
YEAR BUILT/REFIT:	2001 / 2017
TYPE:	MOTOR YACHT
CLASSIFICATION:	RINA
FLAG:	ITALY
NAVAL ARCHITECT:	BAGLIETTO
EXTERIOR DESIGNER:	BAGLIETTO
INTERIOR DESIGNER:	BAGLIETTO
CONSTRUCTION:	ALUMINIUM HULL ALUMINIUM SUPERSTRUCTURE LAID TEAK DECKS
DISPLACEMENT:	122

DIMENSIONS

LENGTH OVERALL:	33 M (108' 03")
LENGTH WATERLINE:	29.25 M (96' 00")
BEAM:	7.29 M (23' 11")
DRAFT (HALF LOAD):	2.50 M (8' 02")
GROSS TONNAGE:	213
NET TONNAGE:	63





SPEED & RANGE UNDER POWER

MAXIMUM SPEED:	28.5 KNOTS
CRUISING SPEED:	20 KNOTS
RANGE:	800 NM @ 20 KNOTS

CAPACITIES

ACCOMMODATION:	10 GUESTS IN 5 STATEROOMS
CREW:	6 CREW MEMBERS IN 4 CABINS
FUEL:	28,000 L / 7,396 GALLONS
FRESH WATER:	5,400 L / 1,427 GALLONS
WATER MAKERS:	400 L / 106 GALLONS
GREY WATER:	600 L / 158 GALLONS
BLACK WATER:	200 L / 52 GALLONS
OIL TANK:	200 L / 52 GALLONS

ACCOMMODATION

OWNER:	1 x MASTER CABIN
GUEST:	1 x VIP CABINS 1 x DOUBLE CABINS 2 x TWIN CABINS
CREW:	1 x CAPTAIN CABIN 1 X ENGINEER'S CABIN 2 X TWIN CREW CABINS

MECHANICAL EQUIPMENT

ENGINES:	2 X MTU 12V4000 M90
ENGINE HOURS:	2742 HOURS (STBD & PORT) AS OF SEPTEMBER 2023
GENERATORS:	2 X KOHLER 50 KW
GENERATOR HOURS:	PORT: 15,423 HOURS AS OF SEPTEMBER 2023 STBD: 15,699 HOURS AS OF SEPTEMBER 2023
GENERATOR FUEL CONSUMPTION:	20 LITRES/HOUR
PROPULSION:	TWIN SCREW
ENGINE CONTROLS:	MTU ELECTRONIC ENGINE MONITORING
STABILISERS:	ZERO-SPEED CMC STABILIZER

NAVIGATION EQUIPMENT

RADAR:	2 X NEW FURUNO RADARS WITH ARPA (2008)
MAGNETIC COMPASS:	2 X RITCHIE COMPASSES
GYROCOMPASS:	SPERRY / PLATH (2018)
AUTO PILOT:	PLATH / SPERRY NAVIPILOT V (SERVICE 2018) FURUNO FCV 291 COLOR ECHO SOUNDER WITH REPEATER ON FLYBRIDGE
GPS:	2 X FURUNO GPS-NAVIGATOR
AIS:	AIS INSTALLED (2009)

COMMUNICATION EQUIPMENT

SATCOM:	PORTABLE THURAYA
VHF:	1 X FIXED VHF SAILOR RT 2047 4 X FIXED VHF SAILOR C4901
LOUDHAILER:	AUTOMATIC SIGNAL CONTROL KOCKUM SONICS TI 96
VSAT:	SEATEL (SERVICE 2018)





DECK EQUIPMENT

- ANCHOR WINDLASS SYSTEM:** 1 X ELECTRICAL 8.8 KW ORVEA (SERVICE 2018)
CRANES: TOP DECK CRANES REMOVED AND OVERHAULED (2018)
GROUND TACKLE: 2 X 240 KG STOCKLESS ANCHORS
 120M OF STUDDED 18MM CHAIN STARBOARD
 110M OF STUDDED 18MM CHAIN PORT
PASSERELLE: HYDRAULIC SWIMMING PLATFORM AND BAGLIETTO MADE SIDE BOARDING LADDER

TENDERS

- 1 X SUR MARINE – ST 330 CLASSIC – HONDA BF20DK2 SR TU NHB14
 1X SUR MARINE – ST 400 PRESTIGE – HONDA BF40DK4 LR TZ NHB14

ENTERTAINMENT EQUIPMENT

- MAIN SALON:** POP-UP LIFT IN THE SALOON FOR SAMSUNG TV 49"
 NEW ENTERTAINMENT SYSTEM HEOS-DENON + WIFI
 SMART TV WITH STARLINK
MASTER STATEROOM: SAMSUNG TV 41"
 SKY SATELLITE RECEIVER
 HEOS + WIFI
VIP STATEROOM: SAMSUNG TV 41"
 SKY SATELLITE RECEIVER
 HEOS + WIFI
GUEST STATEROOMS: HEOS + WIFI IN EACH STATEROOM
SUN DECK: HEOS + WIFI
CREW MESS: LG TV
 PANASONIC MONITOR
 HEOS + WIFI
WIFI: WIFI THROUGHOUT THE BOAT

FOR INQUIRIES & MORE INFORMATION
CONTACT THE CENTRAL AGENT



VESA KAUKONEN

FOUNDER



+33 643 915 414



vesa@largeyachtcorp.com

LARGE YACHT CORP.

OFFICES

25 Boulevard Albert 1er,
98000 Monaco

Douglas Chambers,
North Quay Douglas,
IM1 4LA Isle of Man

www.largeyachtcorp.com