

FOR SALE

# NAUTA



BAGLIETTO | 33 M (108 FT) | 2001/2017



# NAUTA

**NAUTA** is a **pristine** modern vessel, expertly crafted in the iconic Baglietto vintage design, blending timeless elegance with contemporary luxury.

**Offering the best** of both worlds, she is **highly sought after**.

**Fully compliant** with **commercial standards**, equipped with **zero-speed stabilizers**, and exuding true magnificence, she stands as **an exceptional find**.

**ASKING PRICE**

€ 1,500,000 (EX VAT)







# KEY FEATURES

MTU SERVICE  
COMPLETED

FULLY  
COMMERCIAL

RECENTLY  
REFITTED







# KEY FEATURES

28.5 KNOTS  
TOP SPEED

5 SPACIOUS  
STATEROOMS

RARE BAGLIETTO  
MODERN YACHT



Constructed with an aluminum hull and superstructure, she **excels** in both speed and efficiency, thanks to her planing hull design.

Powered by twin MTU 12V4000 M90 engines, **NAUTA** cruises **effortlessly at 20 knots** and reaches **a top speed of 28.5 knots**. With an impressive range of up to 800 nautical miles at a cruising speed of 20 knots, coupled with a fuel capacity of 30,000 liters, her **performance is exceptional**.

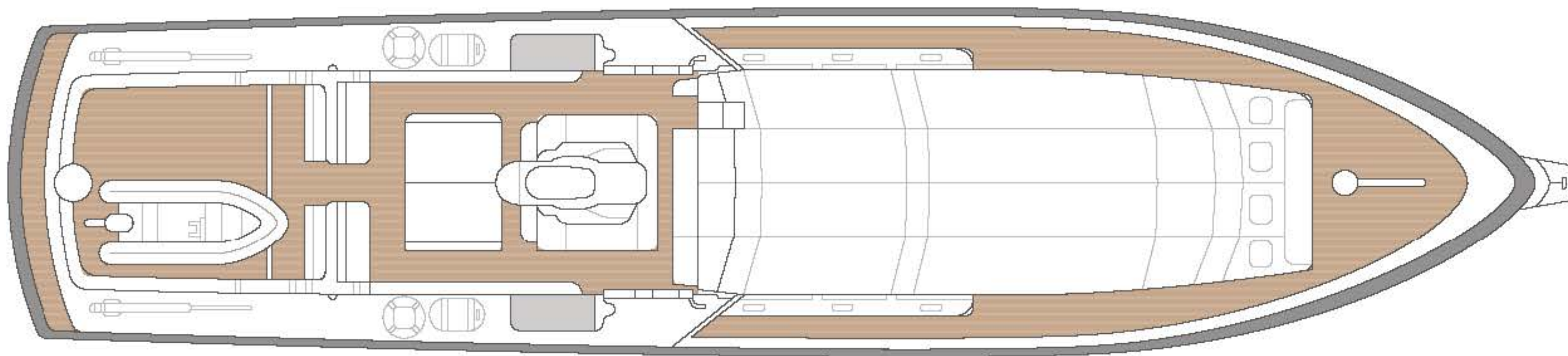
The yacht is also **equipped with Zero-speed CMC stabilizers**, ensuring **supreme comfort** no matter where she is anchored or underway.



**NAUTA** LOOKS LIKE  
NO OTHER YACHT.



# SUN DECK







SUN DECK





**SUN DECK**

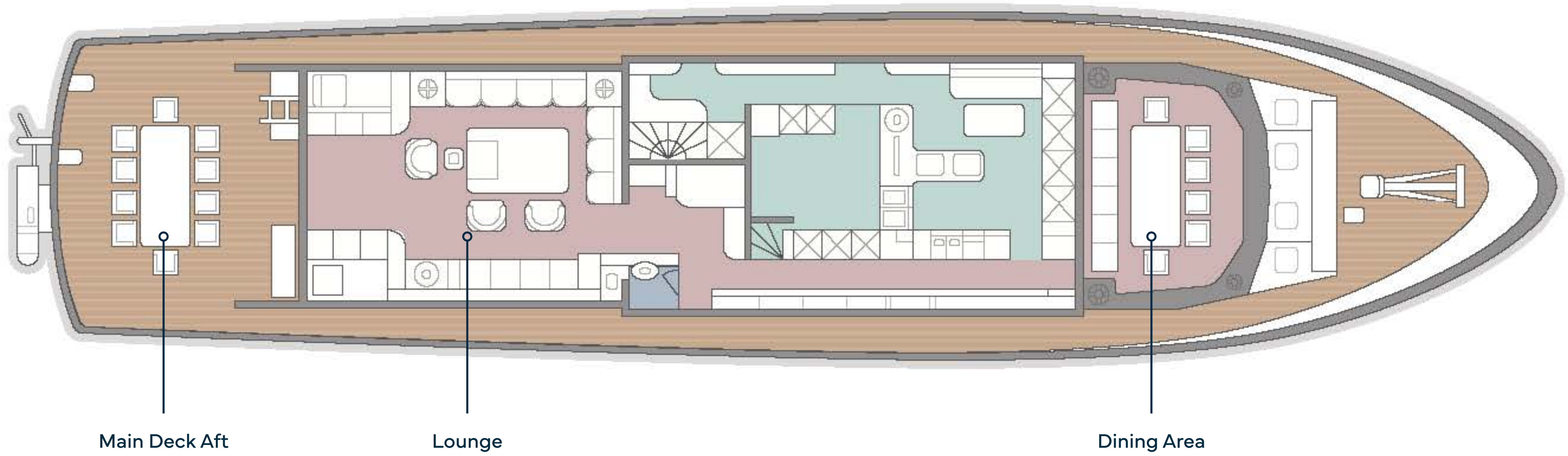




SUN DECK



# MAIN DECK







**MAIN DECK**

**AFT**



# MAIN DECK AFT

Aboard, guests can immerse themselves in a collection of **thoughtfully designed spaces**, each crafted to offer the perfect balance of socializing and relaxation.







**MAIN DECK  
LOUNGE**





**MAIN DECK  
LOUNGE**





**MAIN DECK  
LOUNGE**

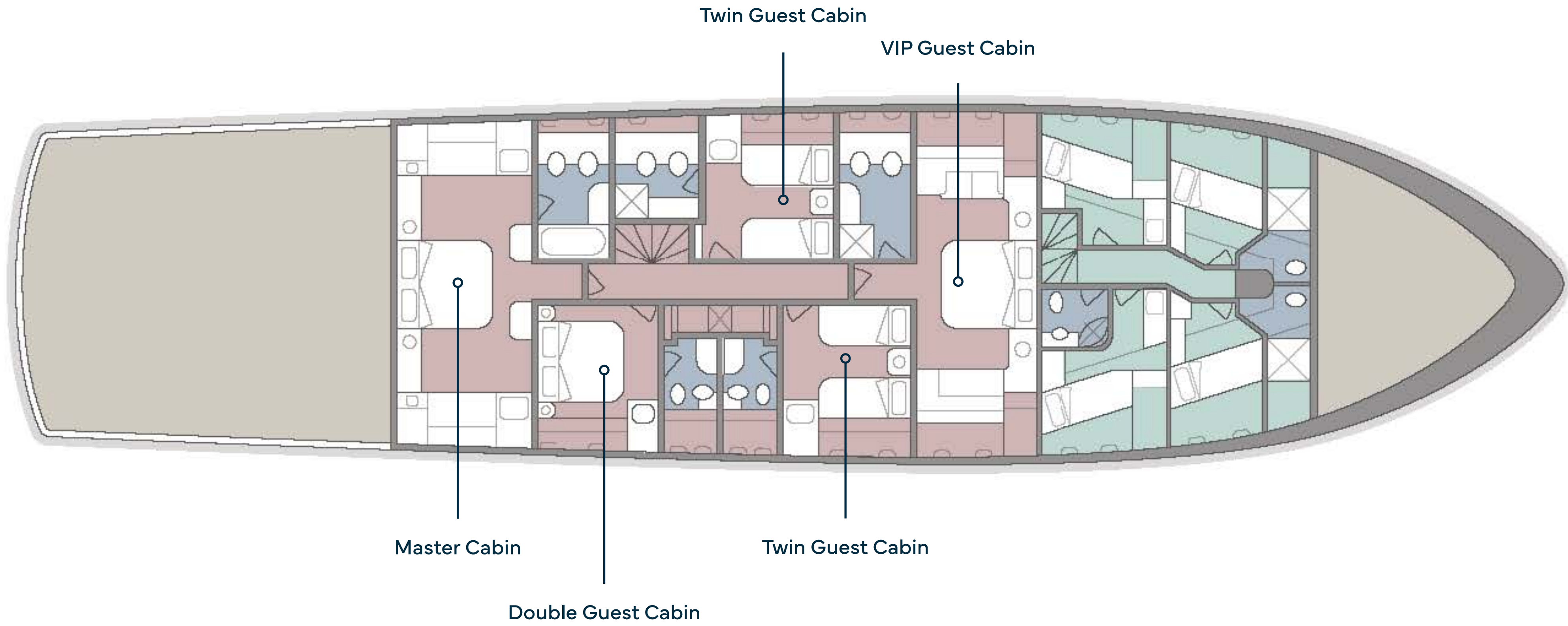




**MAIN DECK**  
**DINING AREA**



# LOWER DECK





# MASTER CABIN

Accommodating **up to 10 guests**, NAUTA features five elegantly designed cabins, including a **spacious full-beam master suite**, a luxurious **full-width VIP cabin**, one double cabin, and two twin guest cabins. Each cabin is meticulously crafted with an **emphasis on comfort and style**, ensuring a truly indulgent experience for every guest.







LOWER DECK

MASTER CABIN





**LOWER DECK  
BATHROOM**





LOWER DECK

TWIN GUEST CABIN





LOWER DECK

TWIN GUEST CABIN





**LOWER DECK**  
**VIP GUEST CABIN**





# **SPECIFICATION**

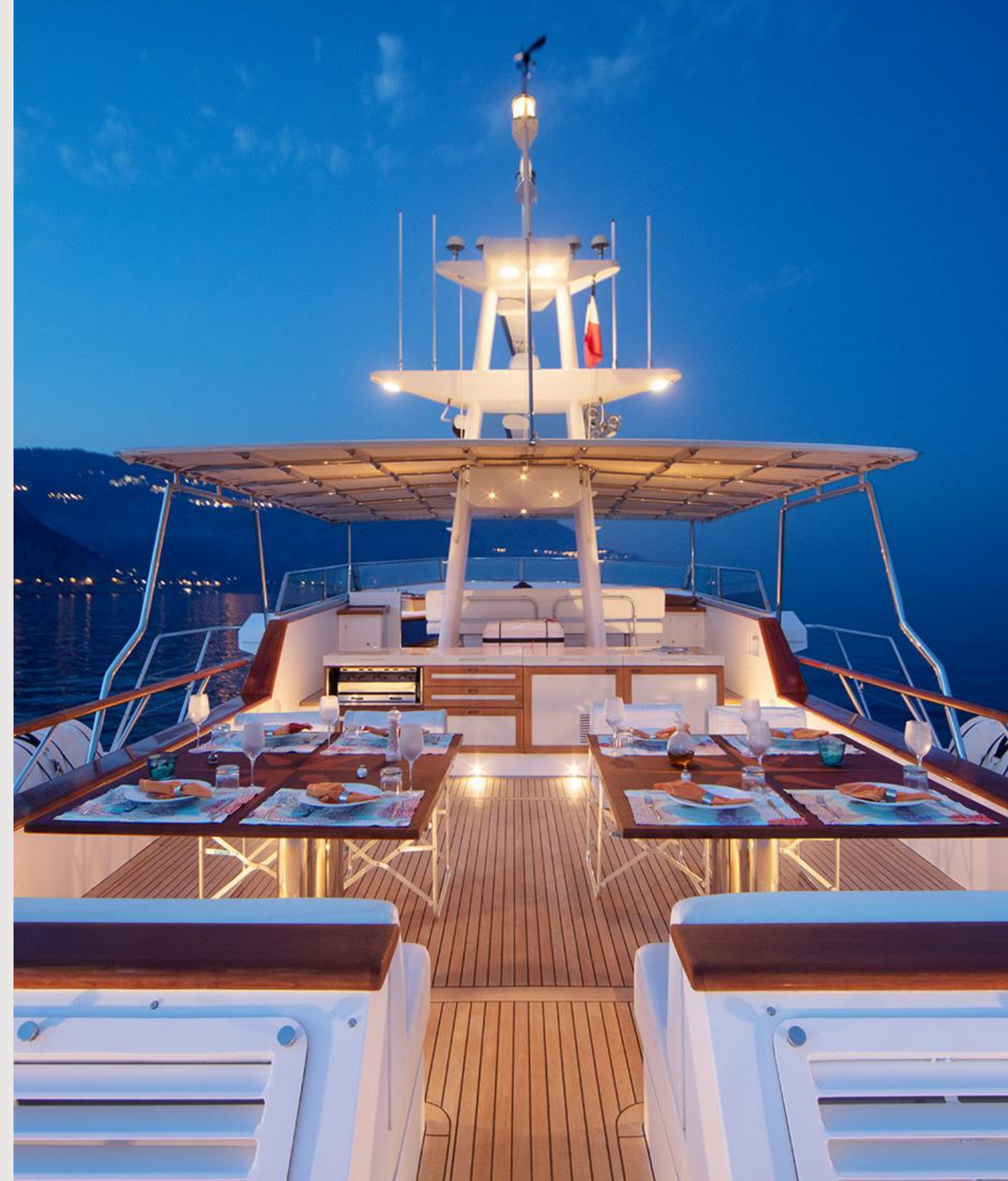


## CHARACTERISTICS

<b>NAME:</b>	NAUTA
<b>BUILDER:</b>	BAGLIETTO
<b>YEAR BUILT/REFIT:</b>	2001 / 2017
<b>TYPE:</b>	MOTOR YACHT
<b>CLASSIFICATION:</b>	RINA
<b>FLAG:</b>	ITALY
<b>NAVAL ARCHITECT:</b>	BAGLIETTO
<b>EXTERIOR DESIGNER:</b>	BAGLIETTO
<b>INTERIOR DESIGNER:</b>	BAGLIETTO
<b>CONSTRUCTION:</b>	ALUMINIUM HULL ALUMINIUM SUPERSTRUCTURE LAID TEAK DECKS
<b>DISPLACEMENT:</b>	122

## DIMENSIONS

<b>LENGTH OVERALL:</b>	33 M (108' 03")
<b>LENGTH WATERLINE:</b>	29.25 M (96' 00")
<b>BEAM:</b>	7.29 M (23' 11")
<b>DRAFT (HALF LOAD):</b>	2.50 M (8' 02")
<b>GROSS TONNAGE:</b>	213
<b>NET TONNAGE:</b>	63







## SPEED & RANGE UNDER POWER

---

<b>MAXIMUM SPEED:</b>	28.5 KNOTS
<b>CRUISING SPEED:</b>	20 KNOTS
<b>RANGE:</b>	800 NM @ 20 KNOTS

## CAPACITIES

---

<b>ACCOMMODATION:</b>	10 GUESTS IN 5 STATEROOMS
<b>CREW:</b>	6 CREW MEMBERS IN 4 CABINS
<b>FUEL:</b>	28,000 L / 7,396 GALLONS
<b>FRESH WATER:</b>	5,400 L / 1,427 GALLONS
<b>WATER MAKERS:</b>	400 L / 106 GALLONS
<b>GREY WATER:</b>	600 L / 158 GALLONS
<b>BLACK WATER:</b>	200 L / 52 GALLONS
<b>OIL TANK:</b>	200 L / 52 GALLONS

## ACCOMMODATION

---

<b>OWNER:</b>	1 x MASTER CABIN
<b>GUEST:</b>	1 x VIP CABINS 1 x DOUBLE CABINS 2 x TWIN CABINS
<b>CREW:</b>	1 x CAPTAIN CABIN 1 X ENGINEER'S CABIN 2 X TWIN CREW CABINS



---

## MECHANICAL EQUIPMENT

<b>ENGINES:</b>	2 X MTU 12V4000 M90
<b>ENGINE HOURS:</b>	2805 HOURS (STBD) AS OF APRIL 2025
<b>GENERATORS:</b>	2 X KOHLER 50 KW
<b>GENERATOR HOURS:</b>	PORT: 15,630 HOURS AS OF APRIL 2025 STBD: 15,842 HOURS AS OF APRIL 2025
<b>GENERATOR FUEL CONSUMPTION:</b>	20 LITRES/HOUR
<b>PROPULSION:</b>	TWIN SCREW
<b>ENGINE CONTROLS:</b>	MTU ELECTRONIC ENGINE MONITORING
<b>STABILISERS:</b>	ZERO-SPEED CMC STABILIZER

---

## NAVIGATION EQUIPMENT

<b>RADAR:</b>	2 X NEW FURUNO RADARS WITH ARPA (2008)
<b>MAGNETIC COMPASS:</b>	2 X RITCHIE COMPASSES
<b>GYROCOMPASS:</b>	SPERRY / PLATH (2018)
<b>AUTO PILOT:</b>	PLATH / SPERRY NAVIPILOT V (SERVICE 2018) FURUNO FCV 291 COLOR ECHO SOUNDER WITH REPEATER ON FLYBRIDGE
<b>GPS:</b>	2 X FURUNO GPS-NAVIGATOR
<b>AIS:</b>	AIS INSTALLED (2009)

---

## COMMUNICATION EQUIPMENT

<b>SATCOM:</b>	PORTABLE THURAYA
<b>VHF:</b>	1 X FIXED VHF SAILOR RT 2047 4 X FIXED VHF SAILOR C4901
<b>LOUDHAILER:</b>	AUTOMATIC SIGNAL CONTROL KOCKUM SONICS TI 96
<b>VSAT:</b>	SEATEL (SERVICE 2018)







## DECK EQUIPMENT

---

- ANCHOR WINDLASS SYSTEM:** 1 X ELECTRICAL 8.8 KW ORVEA (SERVICE 2018)  
**CRANES:** TOP DECK CRANES REMOVED AND OVERHAULED (2018)  
**GROUND TACKLE:** 2 X 240 KG STOCKLESS ANCHORS  
120M OF STUDDED 18MM CHAIN STARBOARD  
110M OF STUDDED 18MM CHAIN PORT  
**PASSERELLE:** HYDRAULIC SWIMMING PLATFORM AND BAGLIETTO MADE SIDE BOARDING LADDER

## TENDERS

---

- 1 X SUR MARINE – ST 330 CLASSIC – HONDA BF20DK2 SR TU NHB14  
1X SUR MARINE – ST 400 PRESTIGE – HONDA BF40DK4 LR TZ NHB14

## ENTERTAINMENT EQUIPMENT

---

- MAIN SALON:** POP-UP LIFT IN THE SALOON FOR SAMSUNG TV 49"  
NEW ENTERTAINMENT SYSTEM HEOS-DENON + WIFI  
SMART TV WITH STARLINK  
**MASTER STATEROOM:** SAMSUNG TV 41"  
SKY SATELLITE RECEIVER  
HEOS + WIFI  
**VIP STATEROOM:** SAMSUNG TV 41"  
SKY SATELLITE RECEIVER  
HEOS + WIFI  
**GUEST STATEROOMS:** HEOS + WIFI IN EACH STATEROOM  
**SUN DECK:** HEOS + WIFI  
**CREW MESS:** LG TV  
PANASONIC MONITOR  
HEOS + WIFI  
**WIFI:** WIFI THROUGHOUT THE BOAT



# NAUTA

