

FOR SALE

ONLYX II

NAUTOR SWAN | 30.21 M (99 FT) | 2005/2021

ONYX II

Crafted in Finland by the world-renowned **Nautor Swan**, **ONYX II** epitomizes the pinnacle of luxury yacht building. **Designed by the legendary Germán Frers**, this Swan 100 showcases timeless elegance and cutting-edge innovation.

In 2021-2022, **ONYX II** underwent an extensive rebuild at Baltic Yachts in Mallorca, elevating her to **impeccable standards**. The refit included new main machinery, new exterior paint, new teak deck, new aircon, new sails, and more.

With **BV Classification**, **ONYX II** is **commercially coded** and ready to charter, presenting not only a luxurious yachting experience but also an **exceptional investment opportunity**. A true contemporary classic, she represents the highest pedigree of yacht building and is ready to deliver unforgettable adventures.

ASKING PRICE

€ 5,950,000 (VAT PAID)



KEY FEATURES

FULL-BEAM
MASTER CABIN AFT

SPACIOUS
INTERIOR

EXTENSIVE REFIT
IN 2021



KEY FEATURES

VAT
PAID

BV
CLASSIFICATION

COMMERCIALLY
CODED

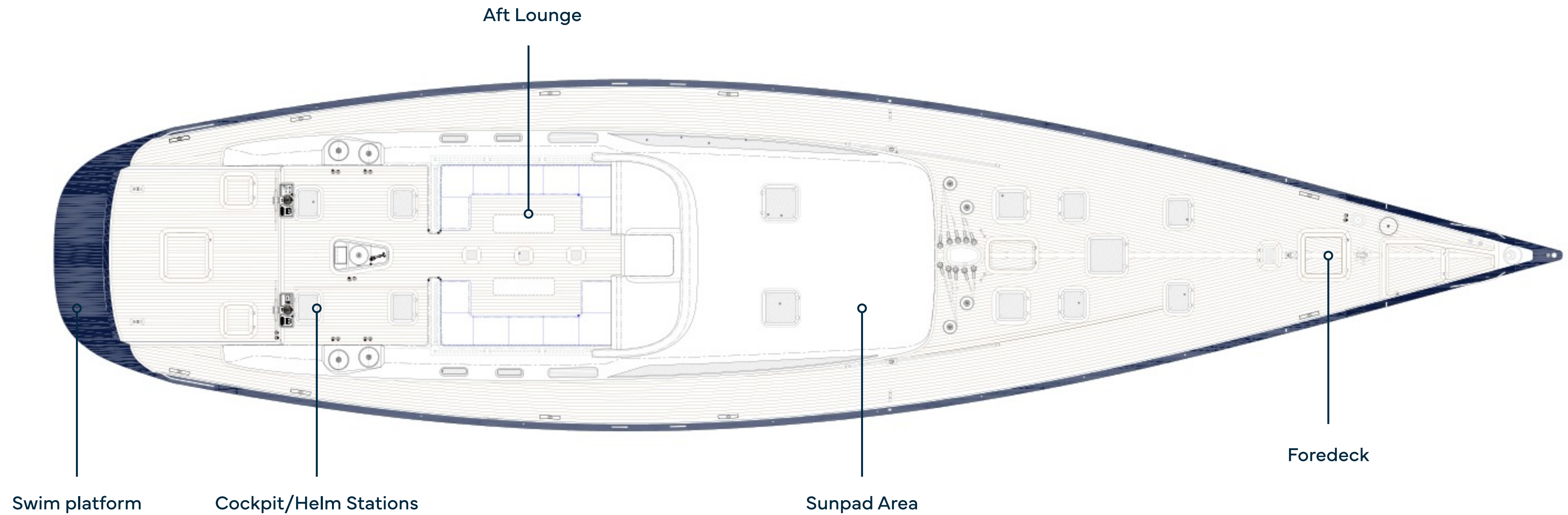
With **BV Classification**, **ONYX II** is **commercially coded** and ready to charter, presenting not only a luxurious yachting experience but also an **exceptional investment opportunity**. A true contemporary classic, she represents the highest pedigree of yacht building and is ready to deliver unforgettable adventures.



ONYX II LOOKS LIKE
NO OTHER YACHT.



MAIN DECK



SWIM PLATFORM

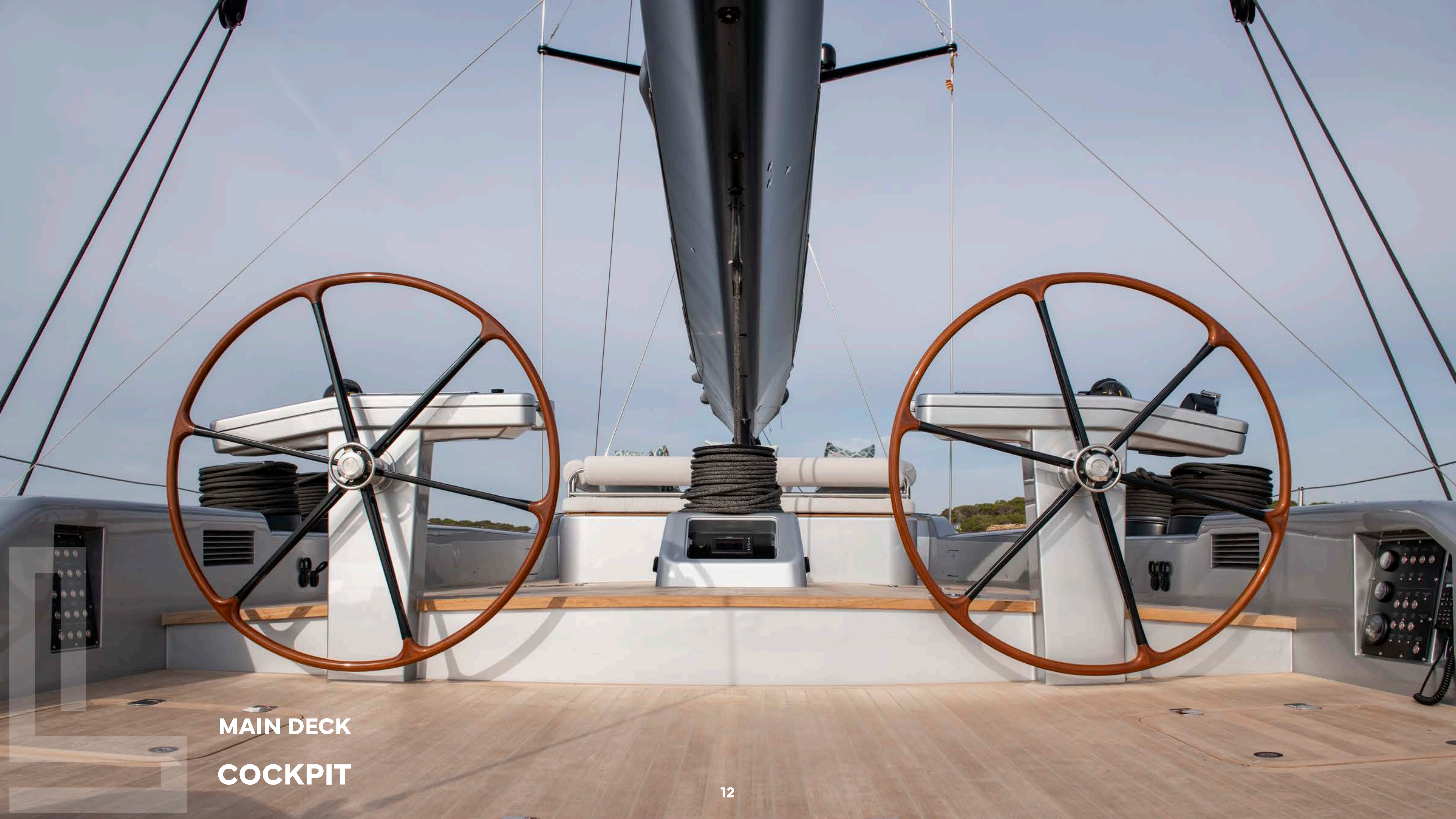
Seamlessly blending functionality with leisure. Designed for effortless water access, it's **perfect for diving** into crystal-clear waters, **launching a tender**, or simply **lounging by the edge**.





MAIN DECK

SWIM PLATFORM



MAIN DECK

COCKPIT

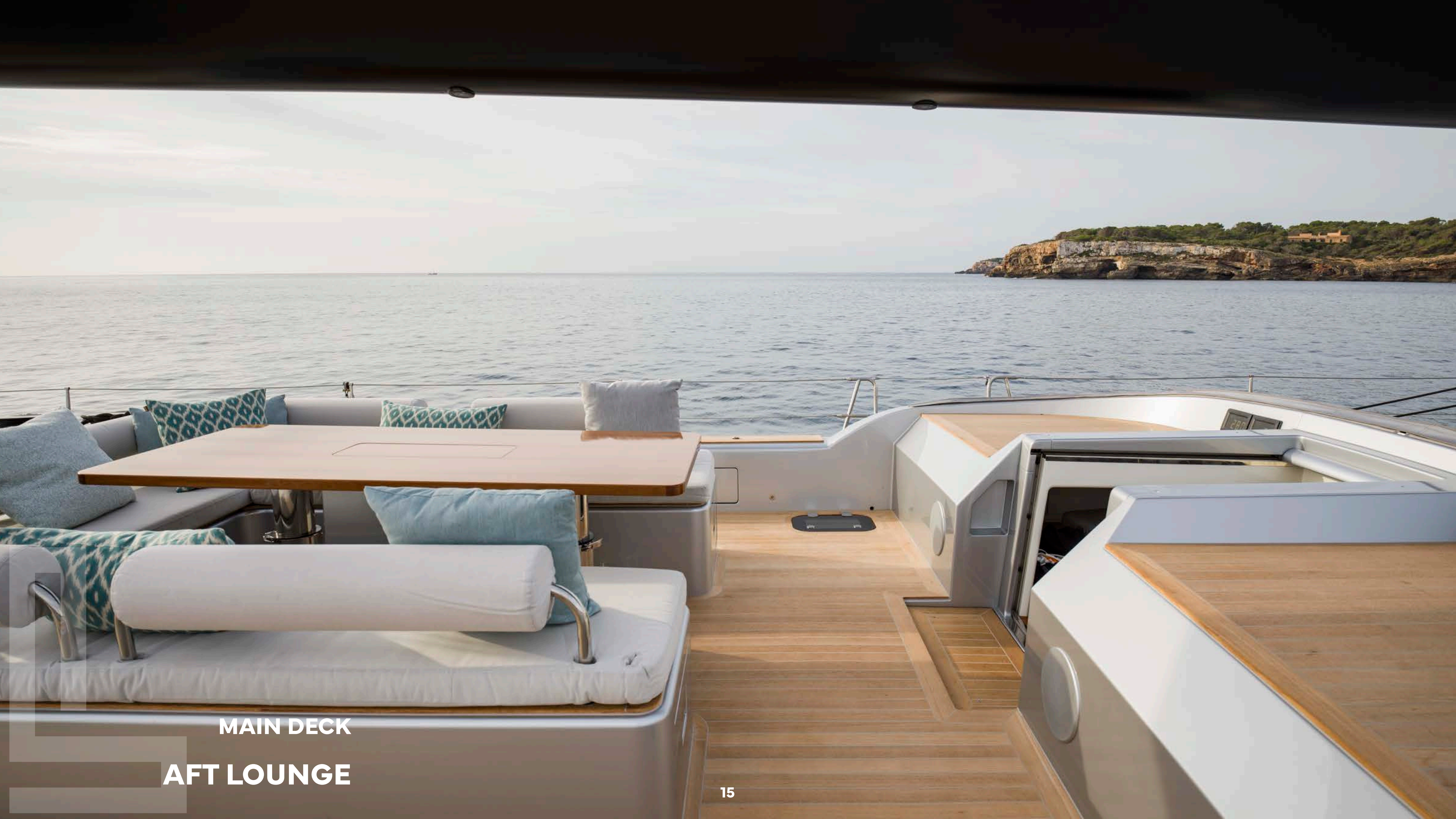


MAIN DECK
COCKPIT

AFT LOUNGE

The Aft Lounge offers a **perfect retreat** beyond the helm, where you can relax on comfortable seating while staying connected to the rhythm of the sails and the sea.

Whether savoring the **thrill** of the voyage or sharing stories with friends, it's a **space that embraces the joy of sailing**.



MAIN DECK

AFT LOUNGE



MAIN DECK
AFT LOUNGE



MAIN DECK
AFT LOUNGE



MAIN DECK

SUNPAD AREA



MAIN DECK

SUNPAD AREA

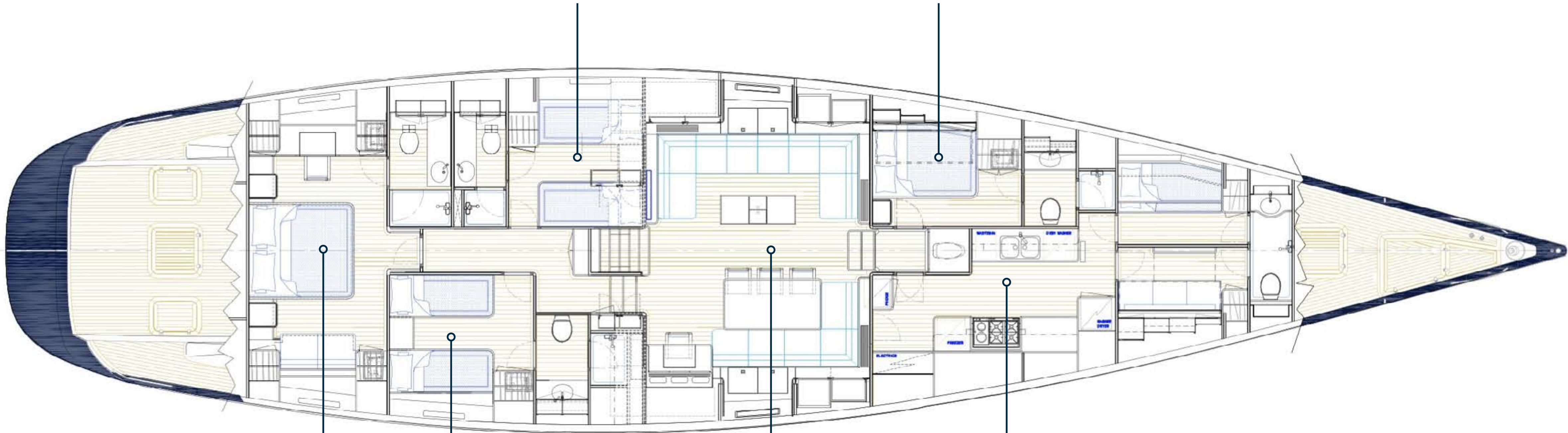


MAIN DECK
FOREDECK

LOWER DECK

Twin Guest Cabin

VIP Guest Cabin



Master Cabin

Saloon

Galley

Twin Guest Cabin



LOWER DECK

MASTER CABIN



LOWER DECK
MASTER CABIN

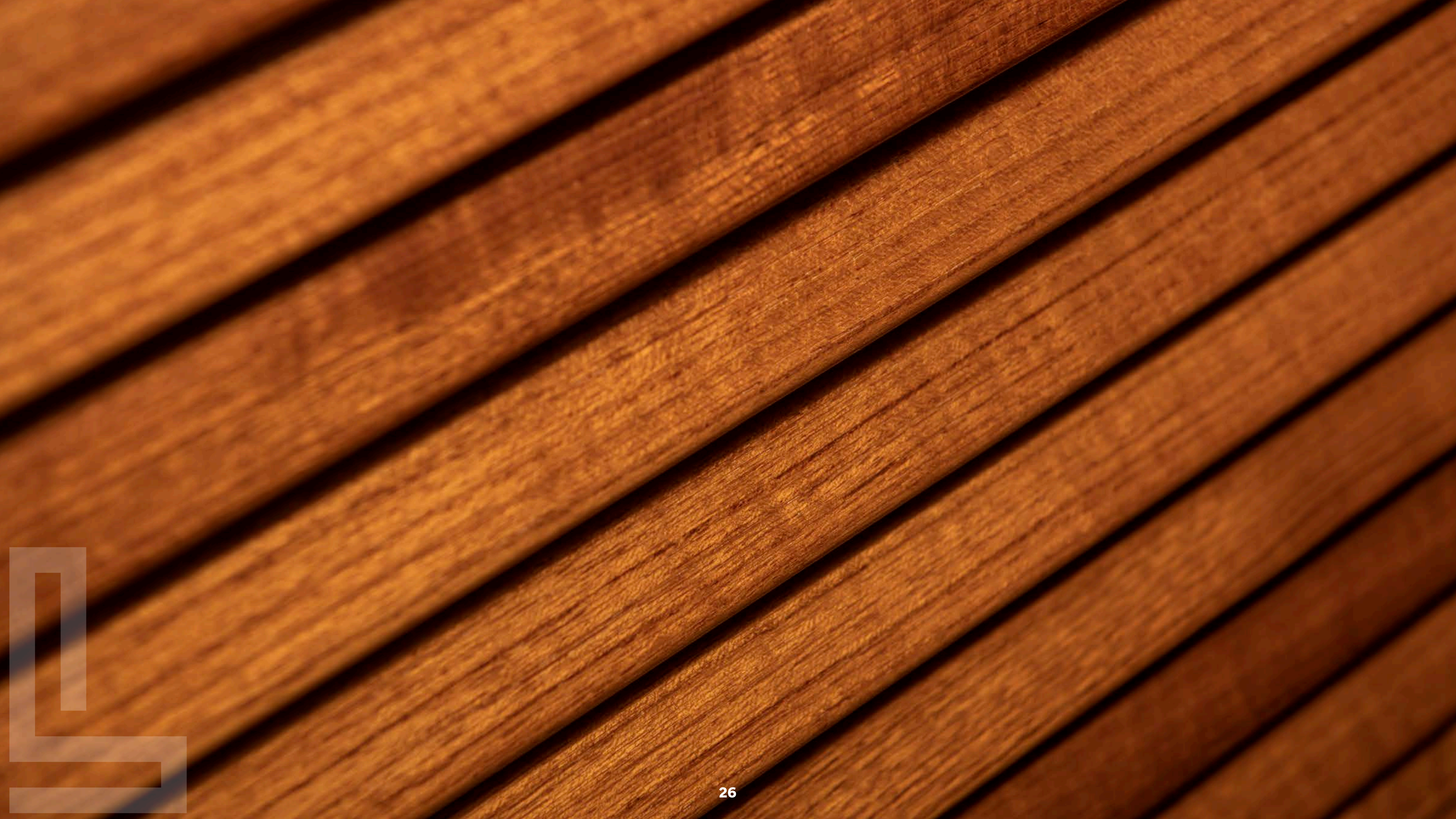


LOWER DECK

MASTER CABIN



LOWER DECK
MASTER CABIN





**LOWER DECK
BATHROOM**



**LOWER DECK
BATHROOM**



LOWER DECK

TWIN GUEST CABIN



LOWER DECK

TWIN GUEST CABIN



LOWER DECK
VIP GUEST CABIN



**LOWER DECK
SALOON**



LOWER DECK
SALOON



LOWER DECK
SALOON



LOWER DECK
SALOON

A sailboat with a large white sail is sailing on a dark blue ocean under a clear blue sky. The word "SPECIFICATION" is written in large, bold, green capital letters in the center of the image. A thin green vertical line extends from the top of the image down to the letter 'I' in "SPECIFICATION".

SPECIFICATION

CHARACTERISTICS

NAME:	ONYX II
BUILDER:	NAUTOR SWAN
YEAR BUILT:	2005
TYPE:	SAILING YACHT
CLASSIFICATION:	BUREAU VERITAS
FLAG:	MALTA
DESIGNER:	GERMÁN FRERS
CONSTRUCTION:	GRP
DISPLACEMENT:	78,000 KG

DIMENSIONS

LENGTH OVERALL:	30.21 M (99'1")
LENGTH WATERLINE:	26.28 M (86'3")
BEAM:	7.06M (23'2")
MAX DRAFT:	4.00 M (13'1")





CAPACITIES

ACCOMMODATION:	8 GUESTS IN 4 CABINS
CREW:	4 X CREW IN 2 CABINS
FUEL:	2,480 LITRES / 655.48 US GALLONS
FRESH WATER:	1,500 LITRES /396.26 US GALLONS
HOLDING TANK:	

ACCOMMODATION

OWNER:	1 x MASTER CABIN
GUEST:	1 x VIP CABINS
	2 x DOUBLE CABINS
CREW:	2 x CREW CABINS

MECHANICAL EQUIPMENT

ENGINES:	JOHN DEERE 6068AFM85 M3 224 KW @2500 RPM
ENGINE HOURS:	1152 HOURS
GENERATORS:	2 X MARINE GENERATORS - NORTHERN LIGHTS M944W3 26KW, 1500RPM, 3PH, 230V/24VDC 50H
GENERATOR HOURS:	3880 HOURS / 5580 HOURS
PTO:	2 X INSTALLED
SHORE POWER:	111/220/50/60HRZ
SERVICE BATTERIES:	MASTERVOLT

KEEL

THE BALLAST BULB: LEAD CASTING IN ONE PIECE, MADE WITH 3%
ANTIMONY LEAD ALLOY

THE FIN: STAINLESS-STEEL CAST STRUCTURE

MAST & RIGGING

MAST: 4 SPREADER CARBON
TITANIUM CHAFE PLATES

BOOM: PARK AVENUE FROM OFFSHORE SPARS WITH CHECK
STAYS
TITANIUM CHAFE PLATES

FURLER: OVERHAUL AND SERVICED RECKMANN FURLER RF90-4
UD

BACK STAY: EC3 CARBON BACK STAY INSTALLED





SAILS

ALL BY EVOLUTION SAILS, 2021

MAIN SAIL, CARBON/TECNORA MEMBRANE, FULLY BATTEN SLAB, 2 REEFS
FURLING JIB, EVOLUTION SAILS, CARBON/TECNORA MEMBRANE
FURLING STRUCTURAL LUFF STAY SAIL, CARBON/TECNORA MEMBRANE
A2 RACING ASYMMETRIC SPINNAKER
A3 RACING ASYMMETRIC SPINNAKER
SPINNAKER STAYSAIL
RACING FURLING JIB, 100% CARBON
DELIVERY MAIN SAIL, CARBON/TECNORA MEMBRANE, PERMANENT 1 REEF

Disclaimer

This document is not contractual. All specifications are given in good faith and offered for informational purposes only. The publisher and company do not warrant or assume any legal liability or responsibility for the accuracy, completeness, or usefulness of any information and/or images displayed. Yacht inventory, specifications and prices are subject to change without prior notice. None of the text and/or images used in this brochure may be reproduced without written consent from the publisher.

An aerial photograph of a dark blue ocean. In the lower-left quadrant, a white sailboat with a single mast is visible. Above it and to the right, a smaller speedboat is moving, leaving a white wake. The text 'ONYX II' is overlaid in large white letters on the right side of the image. Two thin, light green diagonal lines are also present: one in the top right corner and another in the bottom left corner.

ONYX II