

FOR SALE

# ONYX II

NAUTOR SWAN | 30.21 M (99 FT) | 2005/2021



# ONYX II

Crafted in Finland by the world-renowned **Nautor Swan**, **ONYX II** epitomizes the pinnacle of luxury yacht building. **Designed by the legendary Germán Frers**, this Swan 100 showcases timeless elegance and cutting-edge innovation.

In 2021-2022, **ONYX II** underwent an extensive rebuild at Baltic Yachts in Mallorca, elevating her to **impeccable standards**. The refit included new main machinery, new exterior paint, new teak deck, new aircon, new sails, and more.

With **BV Classification**, **ONYX II** is **commercially coded** and ready to charter, presenting not only a luxurious yachting experience but also an **exceptional investment opportunity**. A true contemporary classic, she represents the highest pedigree of yacht building and is ready to deliver unforgettable adventures.

**ASKING PRICE**

€ 5,950,000 (VAT PAID)







# KEY FEATURES

FULL-BEAM  
MASTER CABIN AFT

SPACIOUS  
INTERIOR

EXTENSIVE REFIT  
IN 2021







# KEY FEATURES

VAT  
PAID

BV  
CLASSIFICATION

COMMERCIALLY  
CODED



With **BV Classification**, **ONYX II** is **commercially coded** and ready to charter, presenting not only a luxurious yachting experience but also an **exceptional investment opportunity**. A true contemporary classic, she represents the highest pedigree of yacht building and is ready to deliver unforgettable adventures.



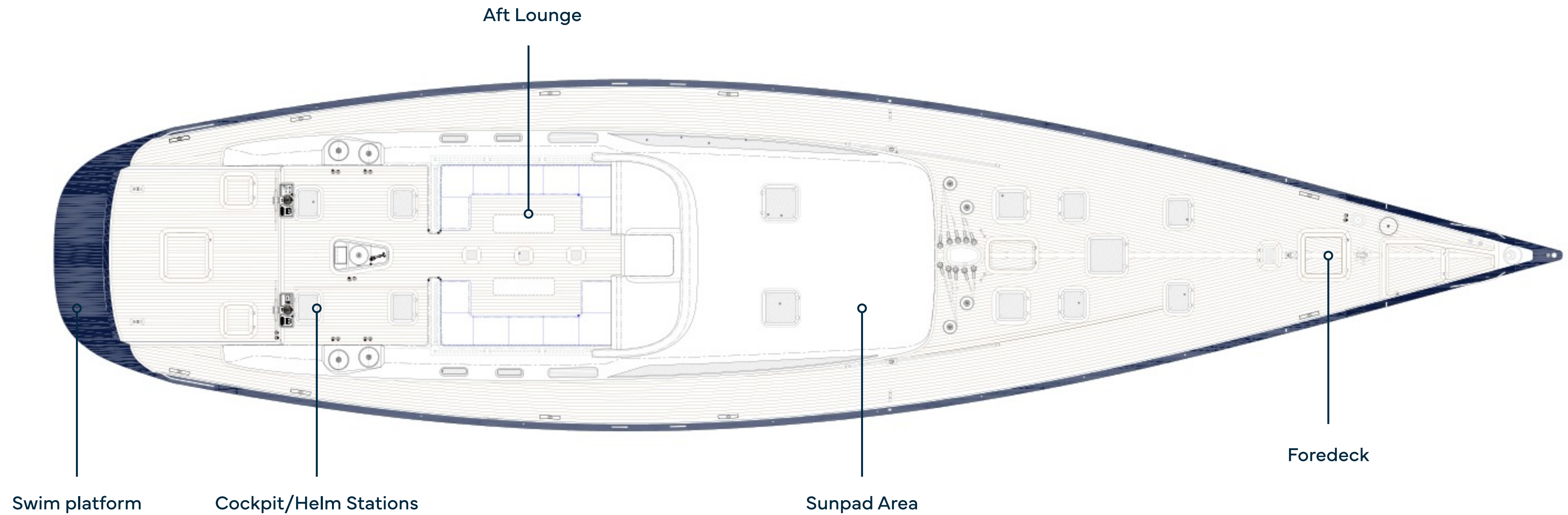
**ONYX II** LOOKS LIKE  
NO OTHER YACHT.







# MAIN DECK





# SWIM PLATFORM

Seamlessly blending functionality with leisure. Designed for effortless water access, it's **perfect for diving** into crystal-clear waters, **launching a tender**, or simply **lounging by the edge**.



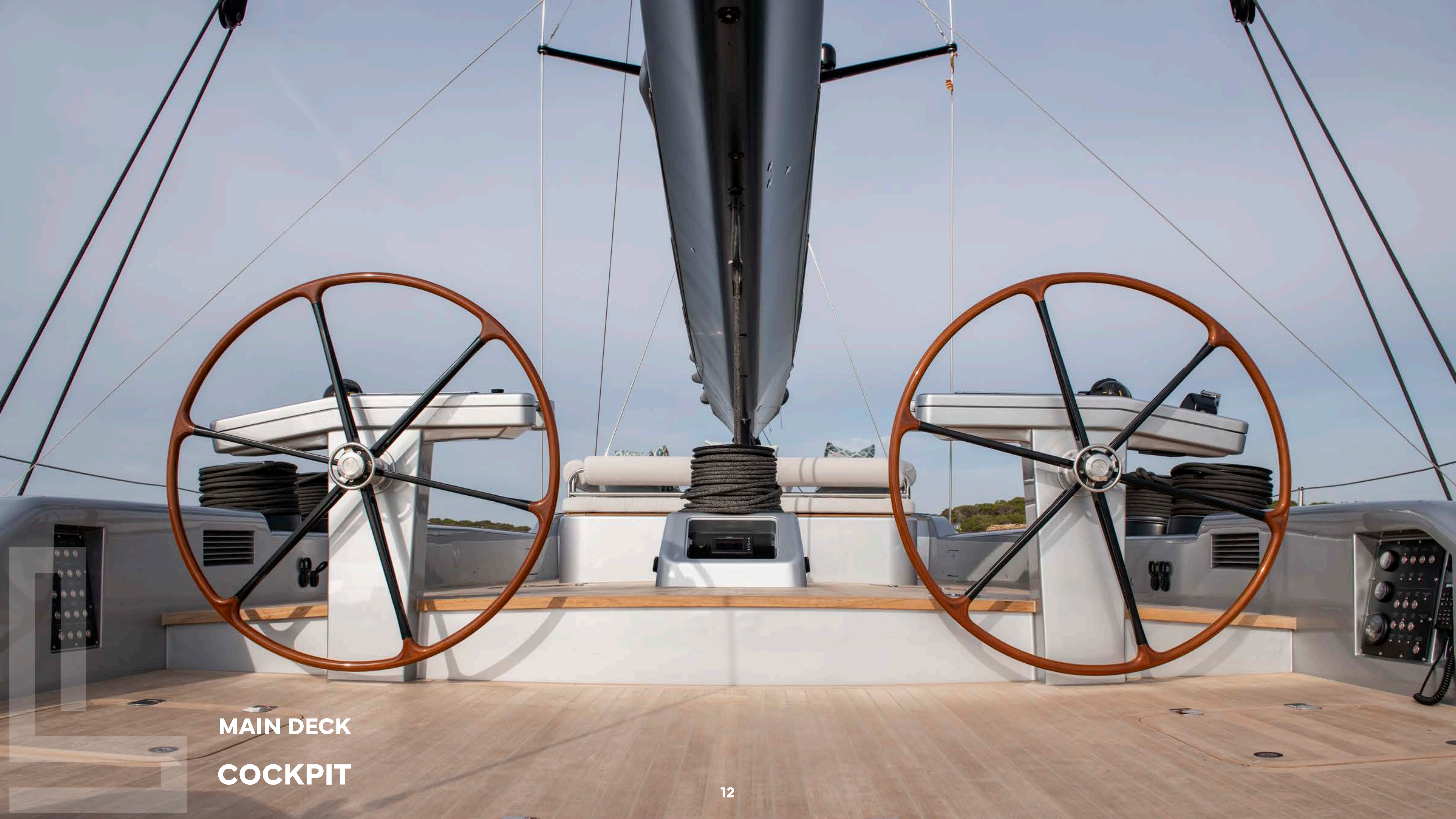




**MAIN DECK**

**SWIM PLATFORM**





MAIN DECK  
COCKPIT





**MAIN DECK**

**COCKPIT**

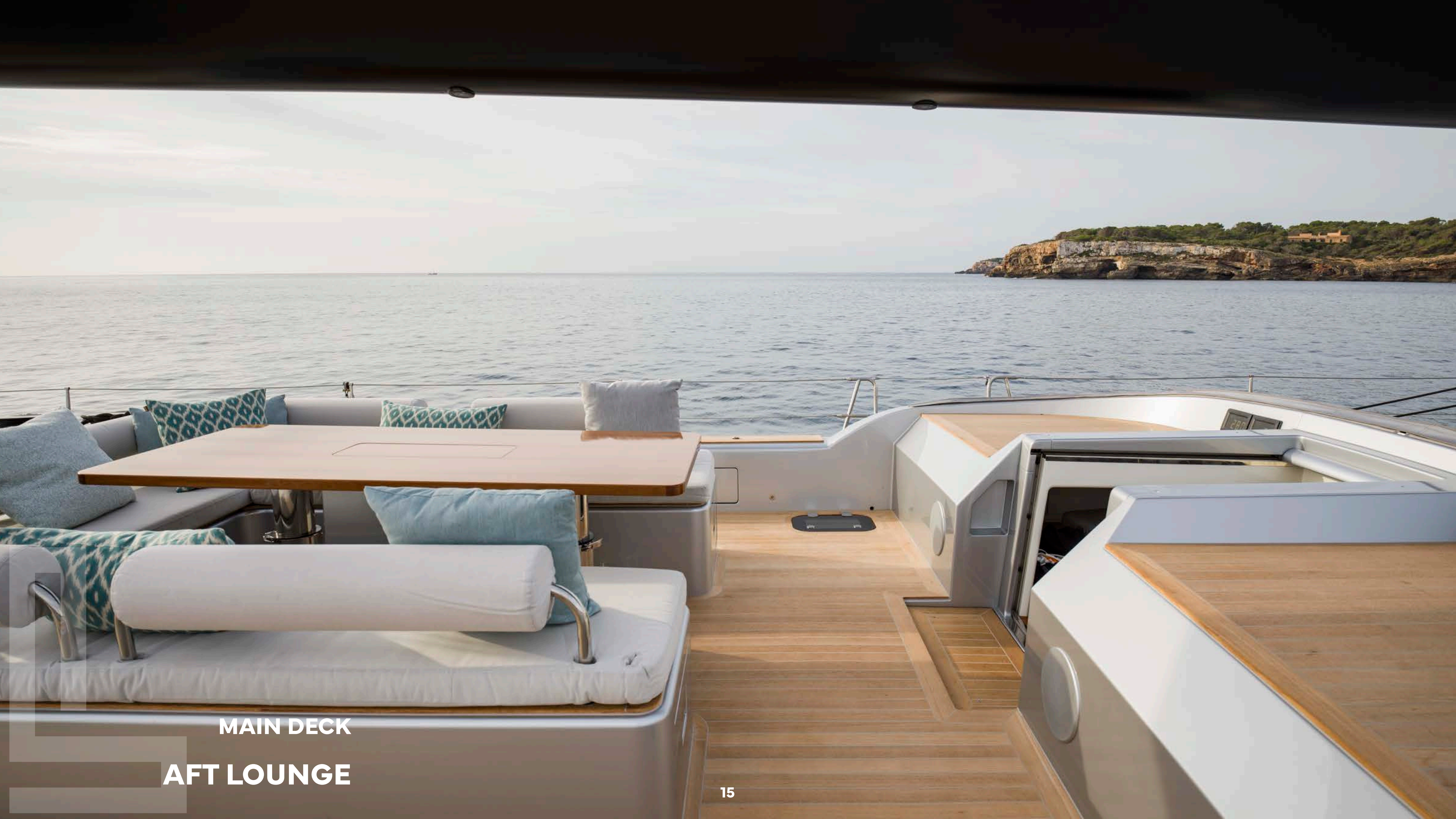


# AFT LOUNGE

The Aft Lounge offers a **perfect retreat** beyond the helm, where you can relax on comfortable seating while staying connected to the rhythm of the sails and the sea.

Whether savoring the **thrill** of the voyage or sharing stories with friends, it's a **space that embraces the joy of sailing**.





**MAIN DECK**

**AFT LOUNGE**





MAIN DECK  
AFT LOUNGE





**MAIN DECK**  
**AFT LOUNGE**





MAIN DECK  
SUNPAD AREA





MAIN DECK

SUNPAD AREA





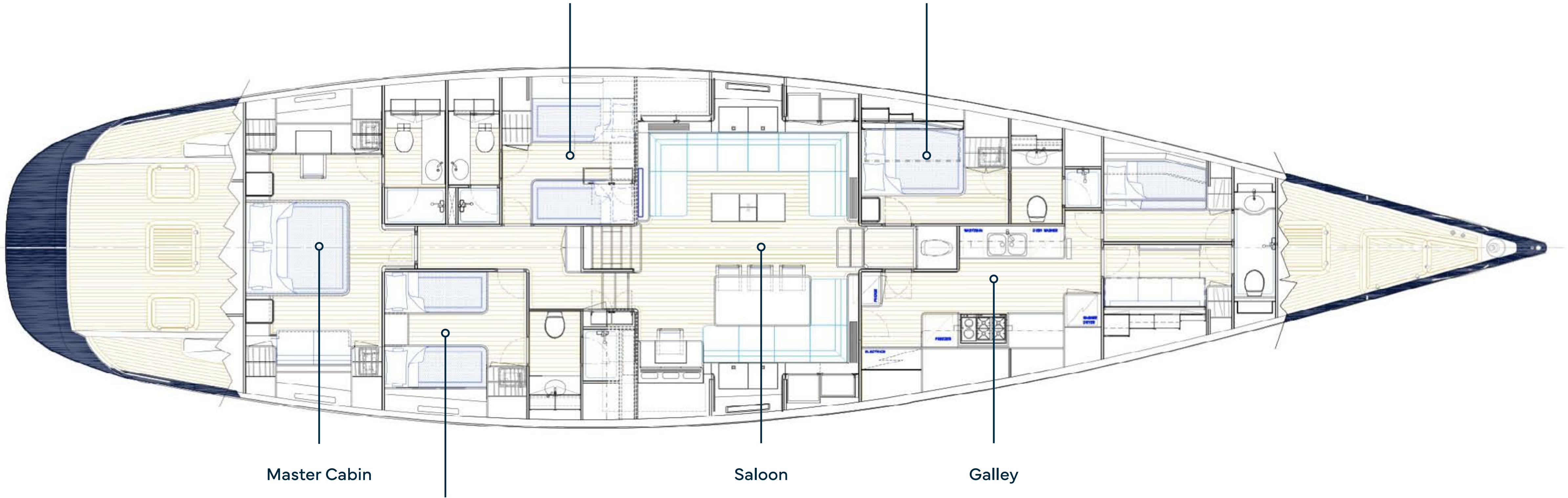
MAIN DECK  
FOREDECK



# LOWER DECK

Twin Guest Cabin

VIP Guest Cabin



Master Cabin

Twin Guest Cabin

Saloon

Galley





LOWER DECK

MASTER CABIN





**LOWER DECK**  
**MASTER CABIN**





LOWER DECK

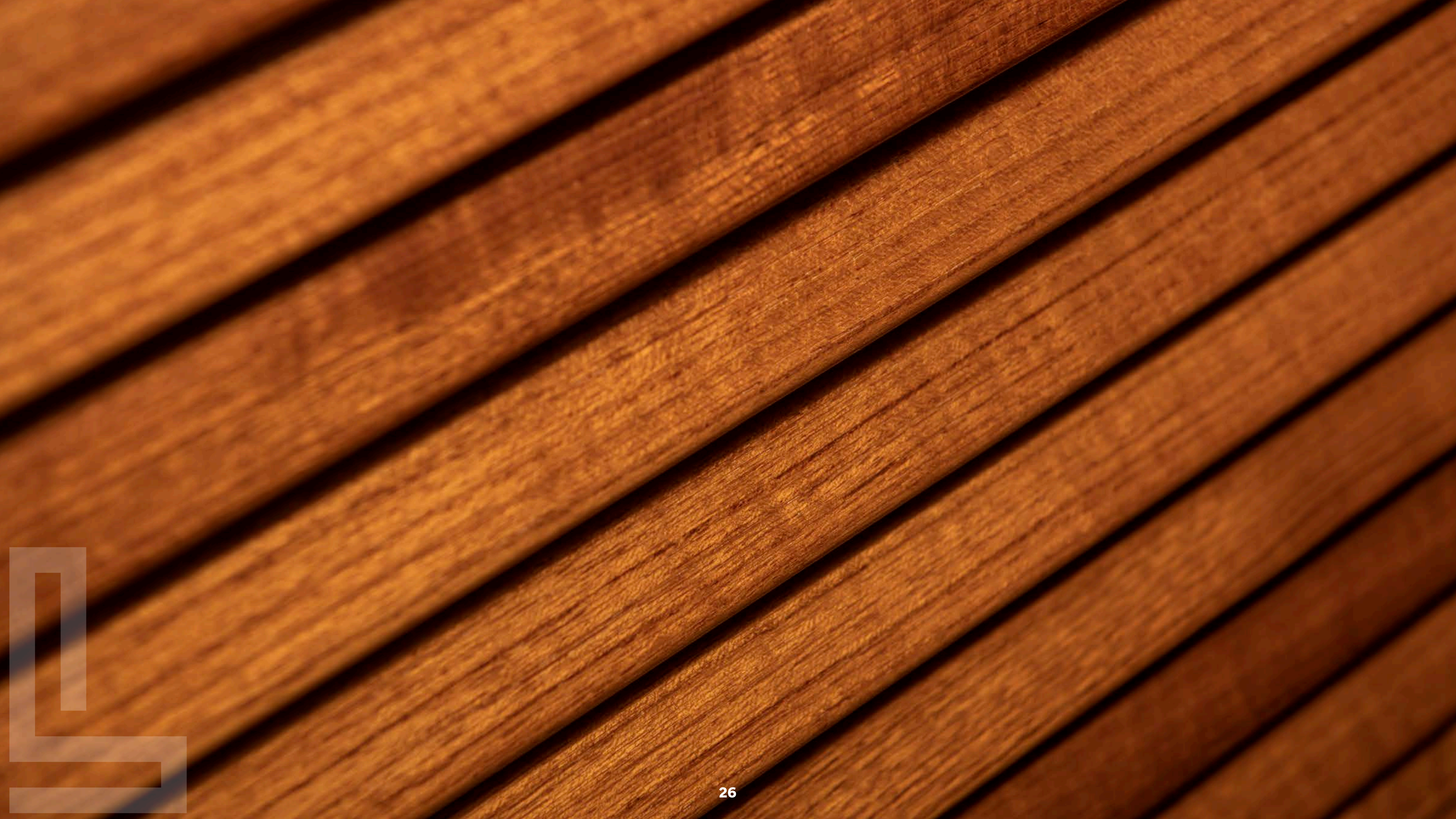
MASTER CABIN





**LOWER DECK**  
**MASTER CABIN**









**LOWER DECK  
BATHROOM**





**LOWER DECK  
BATHROOM**





LOWER DECK

TWIN GUEST CABIN





**LOWER DECK**

**TWIN GUEST CABIN**





LOWER DECK  
VIP GUEST CABIN





**LOWER DECK  
SALOON**





**LOWER DECK**  
**SALOON**





**LOWER DECK**  
**SALOON**





**LOWER DECK  
SALOON**



A sailboat with a large white sail is sailing on a dark blue ocean under a clear blue sky. The word "SPECIFICATION" is written in large, bold, green capital letters in the center of the image. A thin green vertical line extends from the top of the image down to the text.

# **SPECIFICATION**



---

## CHARACTERISTICS

NAME:	ONYX II
BUILDER:	NAUTOR SWAN
YEAR BUILT:	2005
TYPE:	SAILING YACHT
CLASSIFICATION:	BUREAU VERITAS
FLAG:	MALTA
DESIGNER:	GERMÁN FRERS
CONSTRUCTION:	GRP
DISPLACEMENT:	78,000 KG

---

## DIMENSIONS

LENGTH OVERALL:	30.21 M (99'1")
LENGTH WATERLINE:	26.28 M (86'3")
BEAM:	7.06M (23'2")
MAX DRAFT:	4.00 M (13'1")







## CAPACITIES

---

ACCOMMODATION:	8 GUESTS IN 4 CABINS
CREW:	4 X CREW IN 2 CABINS
FUEL:	2,480 LITRES / 655.48 US GALLONS
FRESH WATER:	1,500 LITRES / 396.26 US GALLONS
HOLDING TANK:	

## ACCOMMODATION

---

OWNER:	1 x MASTER CABIN
GUEST:	1 x VIP CABINS 2 x DOUBLE CABINS
CREW:	2 x CREW CABINS

## MECHANICAL EQUIPMENT

---

ENGINES:	JOHN DEERE 6068AFM85 M3 224 KW @2500 RPM
ENGINE HOURS:	1152 HOURS
GENERATORS:	2 X MARINE GENERATORS - NORTHERN LIGHTS M944W3 26KW, 1500RPM, 3PH, 230V/24VDC 50H
GENERATOR HOURS:	3880 HOURS / 5580 HOURS
PTO:	2 X INSTALLED
SHORE POWER:	111/220/50/60HRZ
SERVICE BATTERIES:	MASTERVOLT



KEEL

THE BALLAST BULB: LEAD CASTING IN ONE PIECE, MADE WITH 3%  
ANTIMONY LEAD ALLOY

THE FIN: STAINLESS-STEEL CAST STRUCTURE

MAST & RIGGING

MAST: 4 SPREADER CARBON  
TITANIUM CHAFE PLATES

BOOM: PARK AVENUE FROM OFFSHORE SPARS WITH CHECK  
STAYS  
TITANIUM CHAFE PLATES

FURLER: OVERHAUL AND SERVICED RECKMANN FURLER RF90-4  
UD

BACK STAY: EC3 CARBON BACK STAY INSTALLED







## SAILS

---

ALL BY EVOLUTION SAILS, 2021

**MAIN SAIL, CARBON/TECNORA MEMBRANE, FULLY BATTEN SLAB, 2 REEFS**  
**FURLING JIB, EVOLUTION SAILS, CARBON/TECNORA MEMBRANE**  
**FURLING STRUCTURAL LUFF STAY SAIL, CARBON/TECNORA MEMBRANE**  
**A2 RACING ASYMMETRIC SPINNAKER**  
**A3 RACING ASYMMETRIC SPINNAKER**  
**SPINNAKER STAYSAIL**  
**RACING FURLING JIB, 100% CARBON**  
**DELIVERY MAIN SAIL, CARBON/TECNORA MEMBRANE, PERMANENT 1 REEF**

### Disclaimer

This document is not contractual. All specifications are given in good faith and offered for informational purposes only. The publisher and company do not warrant or assume any legal liability or responsibility for the accuracy, completeness, or usefulness of any information and/or images displayed. Yacht inventory, specifications and prices are subject to change without prior notice. None of the text and/or images used in this brochure may be reproduced without written consent from the publisher.



FOR INQUIRIES & MORE INFORMATION  
**CONTACT THE CENTRAL AGENT**



**VESA KAUKONEN**

**FOUNDER**



+33 643 915 414



vesa@largeyachtcorp.com



# LARGE YACHT CORP.

## OFFICE

25 Boulevard Albert 1er,  
98000 Monaco

[www.largeyachtcorp.com](http://www.largeyachtcorp.com)