

OKKO

FOR CHARTER



MONDOMARINE | 41 M (134.6 FT) | 2013

OKKO

Her interior and exterior were designed by Giorgio Vafiadis who created a ***luxurious yet contemporary result***. Spacious 5 en-suite cabins including generous main deck Owner suite, and her crew of 7.

Underway and zero-speed, Fin stabilizers will ensure ***excellent seakeeping capabilities*** whilst her ***low fuel consumption*** makes her very economical and environmentally friendly.

KEY FEATURES

366GT

The elegant styling does not hint at her high volume of 366GT

DESIGN

Exterior and Interior design by Giorgio Vafiadis

5 CABINS

for 12 guests in fully equipped en-suite cabins

GENEROUS SUNDECK

with barbecue grill and panoramic jacuzzi



IMO 9660401

KEY FEATURES

STABILISERS

Underway and zero-speed fin stabilisers to ensure comfort onboard

RYA TRAINING CENTER

for jet skis

WATER TOYS

A wide range of water gear, including a slide, 2 jet skis, sea bobs, and more!

SWIMMING PLATFORM

with hydraulic transformer





Embark on your charter adventure
uncover an array of activities for
both relaxation and recreation.

Maintain your fitness routine in the
outdoor gym area, unwind in the
jacuzzi with stunning views, and
delve into a selection of **water toys**
for enhanced enjoyment.

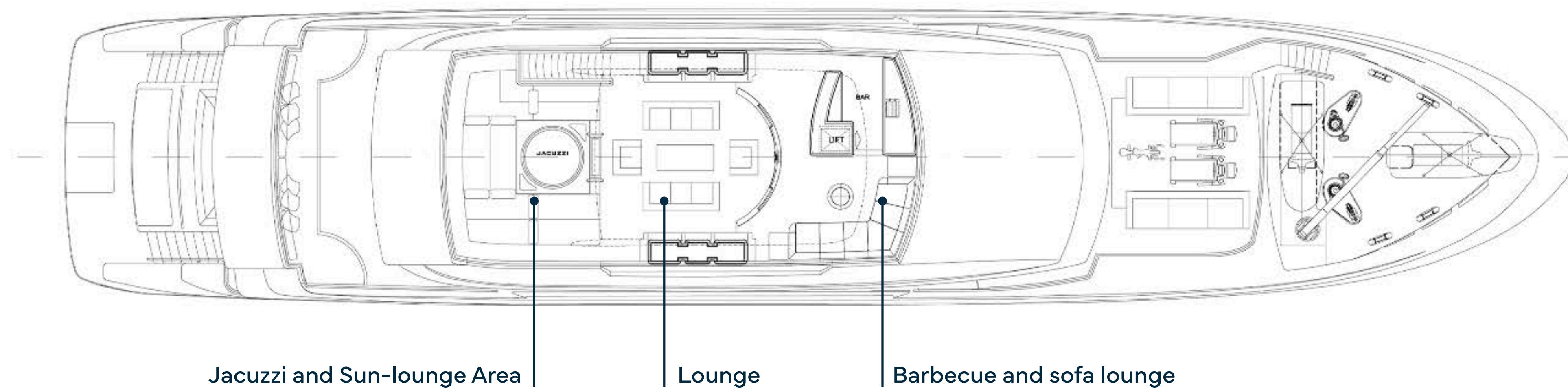
Onboard, there's a delightful
option for everyone.



OKKO WILL KEEP
YOU ENTERTAINED.



FLY BRIDGE



JACUZZI AND SUN-LOUNGE AREA

Indulge in pure luxury as you unwind in jacuzzi, where warm waters and panoramic views create the **perfect oasis for relaxation**.

Immerse yourself in a **tranquil escape** while surrounded by the beauty of the open sea.





JACUZZI AND SUN-LOUNGE AREA



LOUNGE

OKKO is meticulously designed for **Mediterranean outdoor living**, featuring well-crafted deck spaces. This includes a tranquil lounging area next to a bar and sofa section, complemented by a jacuzzi for **ultimate relaxation**.

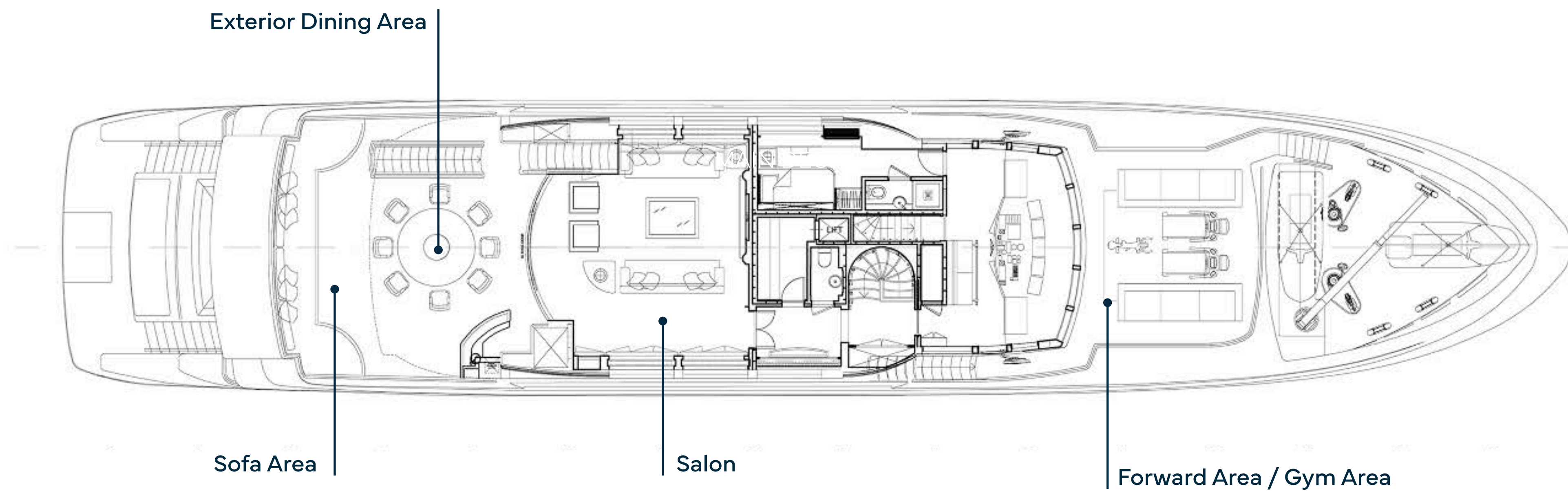


LOUNGE



BARBECUE AND SOFA LOUNGE

UPPER DECK



SOFA AREA





EXTERIOR DINING AREA



EXTERIOR DINING AREA



SALON

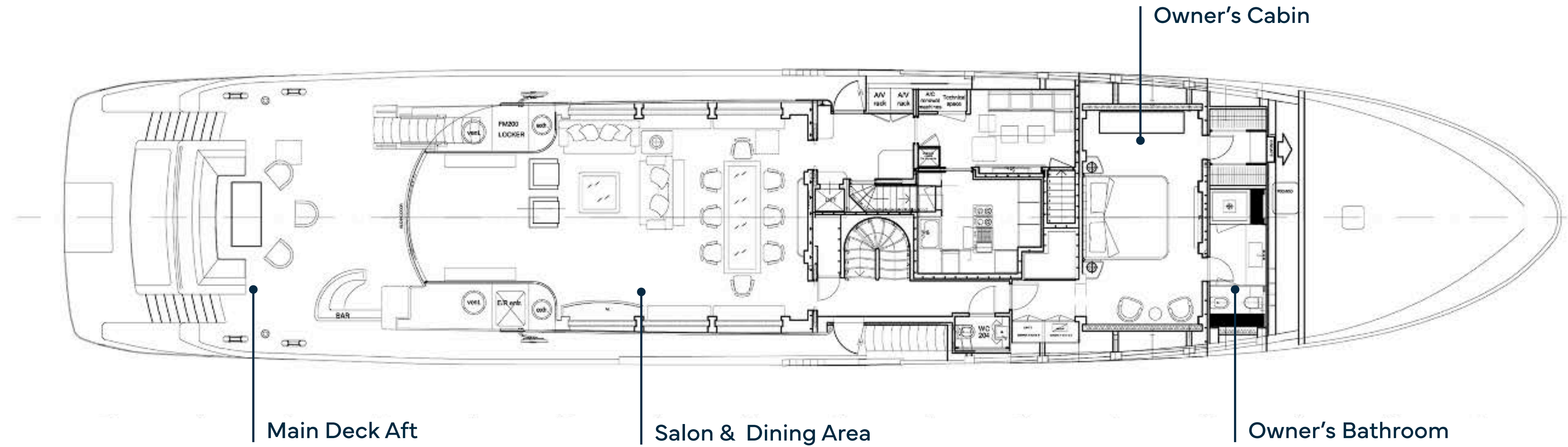


SALON

GYM AREA



MAIN DECK





MAIN DECK AFT

SALON

The main deck salon and dining area provide an **inviting open space**.

Expansive windows enhance the ambiance, offering a **splendid view**.



DINING AREA

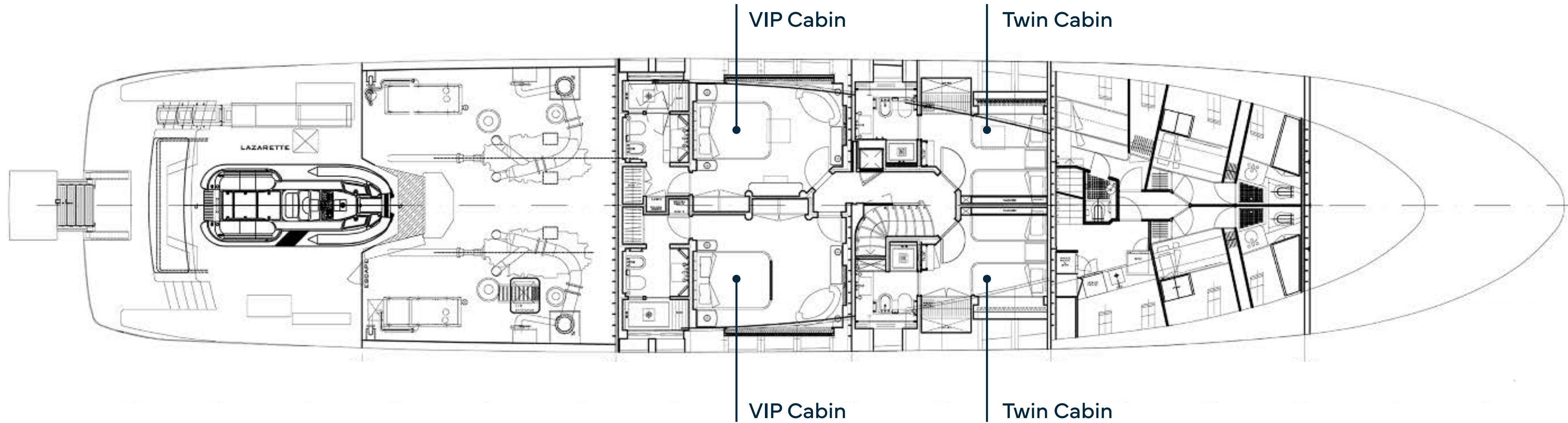


OWNER'S CABIN



OWNER'S BATHROOM

LOWER DECK





VIP CABIN

The remaining four cabins, situated on the lower deck, consist of **two generously sized double VIP cabins** and **two win cabins**, each equipped with its own ensuite facilities.



VIP CABIN



BATHROOM



TWIN CABIN



The image shows a well-appointed twin cabin. It features two lower bunk beds with white linens and brown throw blankets, and one upper bunk bed. The walls are covered in wood paneling and large, tufted leather headboard panels. A central wooden nightstand holds two lamps and a tablet. The ceiling has recessed lighting and speakers. The overall atmosphere is warm and sophisticated.

TWIN CABIN



BATHROOM







EXCEPTIONAL

Showcasing an outstanding blend of **lavish design** and **superb amenities**, OKKO offers everything one could desire for an unforgettable yacht charter vacation.

SPECIFICATION



CHARACTERISTICS

NAME:	OKKO
BUILDER:	MONDOMARINE
YEAR (REFIT YEARS):	2013 (2018)
TYPE:	SEMI-DISPLACEMENT
CLASSIFICATION:	A1 COMMERCIAL YACHTING SERVICE, AMS
FLAG:	MALTA
EXTERIOR DESIGNER:	GIORGIO VAFIADIS
INTERIOR DESIGNER:	GIORGIO VAFIADIS
CONSTRUCTION HULL:	ALUMINIUM
CRUISING SPEED:	12 KNOTS
MAXIMUM SPEED:	16 KNOTS

DIMENSIONS

LENGTH O.A:	41,10 METRES (132FT 8")
BEAM:	8,10 METRES (26FT 5")
DRAFT:	2,3 METRES (7FT 5")
GROSS TONNAGE:	366

ACCOMMODATION

OWNER:	1 x STATEROOM
GUEST:	2 x VIP CABINS 2 x TWIN CABINS
TOTAL:	12 GUESTS
CREW:	CAPTAIN + 6





MACHINERY

MAIN ENGINES:	2 x MTU 12V 2000 M91 @ 2,350 RPM
MAXIMUM SPEED:	16 KNOTS @ 600 L/HOUR
CRUISING SPEED:	12 KNOTS @ 250 L/HOUR
RANGE (CRUISING SPEED):	3,000 NM @ 12 KNOTS
GENERATORS:	2 x KOHLER 70EFOZD @ 40 L/HOUR
STABILISERS:	ZERO SPEED NAIAD 525
BOW THRUSTER:	VOSPER VT75
FUEL CAPACITY:	49.800 L
FRESH WATER CAPACITY:	9.290 L

AUDIO VISUAL EQUIPMENT

AXIS CCTV CAMERAS AND RECORDING SYSTEM
MORSE STEWARD CALL BUTTON SYSTEM WITH 7 CUSTOM FINISHED BUTTONS
CISCO HARDWARE; SWITCHES
WI-FI ACCESS POINTS
CAT 6 INTERNAL CABLING
7Å~ 2020 IPAD MINI 5TH GEN
2 x LUXEPORT DOCKING STATIONS
KARTINA TV, APPLE TV
SONY BLURAY, AND PLEX SERVER
DENON VR AMPLIFIERS, CRESTRON DIGITAL MEDIA
CRESTON 3 SERIES CONTROL SYSTEM WITH 8 PORT IR
PLAYSTATION 5 IN MAIN SALON
XBOX IN UPPER DECK SALON
82" TV IN UPPER DECK SALON
65" TV IN MAIN DECK SALON

COMMUNICATIONS

4G PEPWAVE WITH DUAL EXTERNAL SCAN ANTENNAS
KERIO CONTROL SYSTEM, STARLINK MARITIME, AND TVRO EQUIPPED
INTERNAL 4G SIGNAL REPEATER SYSTEM (EU & USA)

COMMUNICATIONS PACKAGE

4G	500GB DATA PACKAGE INCLUDED. UPGRADABLE TO ITB WITH A 15-DAY NOTICE. COST EUROPE 2,396 EUR CARIBBEAN 7,773 EUR
STARLINK MARITIME	2 MBPS DOWNLOAD SPEED INCLUDED. UPGRADABLE TO THE FOLLOWING, ONE-MONTH FEE MINIMUM:
3 MBPS	€1,385.00
4 MBPS	€2,971.00
6 MBPS	€5,775.00
10 MBPS	€6,840.00
15 MBPS	€13,705.00
20 MBPS	€16,840.00





TENDERS & TOYS

TENDERS:

BWA 28 GTO, 250 HP V6, 2025
CASTOLDI JT 17 JET TENDER

TOYS:

AIRHEAD MAPLE INFLATABLE COUCH
JOBE GALAXY RINGO
JOBE VIRTUE 67" WATER SKI
JOBE REBUBILIK WAKEBOARD PACKAGE
FREESTYLE OKKO SLIDE
FUNAIR TRAMPOLINE
JELLYFISH NET POOL
2 x SEA DOO RXT 300 X (2020)
2 x BACKUP SUPS
2 x NEW SUPS (KAYAK CONVERTIBLE) + 1 MOTOR
3 x SEA BOB CAYAGO FS5R (2019)

GYM EQUIPMENT

ROWING MACHINE:

1x TECHNOGYM SKILLROW

TREADMILL:

1x TECHNOGYM MYRUN

BIKE:

1x TECHNOGYM RIDE

A woman with long blonde hair, wearing a black life vest and a black swimsuit, is riding a red and black Sea-Doo jet ski on the ocean. The jet ski is moving from left to right, creating a white wake. The background is a vast blue ocean under a clear sky. The text "CHARTER RATES" is overlaid in the center in a bright green, bold, sans-serif font. A thin vertical green line extends from the top of the page down to the text.

CHARTER RATES

2025 CHARTER RATES

HIGH SEASON JULY AND AUGUST

€160,000

PER WEEK

PLUS VAT, PLUS COSTS (APA 30%)

MID SEASON MAY, JUNE AND SEPTEMBER

€125,000

PER WEEK

PLUS VAT, PLUS COSTS (APA 30%)

LOW SEASON FROM OCTOBER TO APRIL

€95,000

PER WEEK

PLUS VAT, PLUS COSTS (APA 30%)

EVENTS

€160,000

PER WEEK

PLUS VAT, PLUS COSTS (APA 30%)

A Security Deposit of €10,000



FOR INQUIRIES & MORE INFORMATION

charterca@largeyachtcorp.com

OFFICE

25 Boulevard Albert 1er,
98000 Monaco

www.largeyachtcorp.com